

VOR/DME GRI 116.55 Chan 112(Y)	APP CRS 313°	Rwy Idg TDZE 1844 Apt Elev 1847
--	------------------------	---

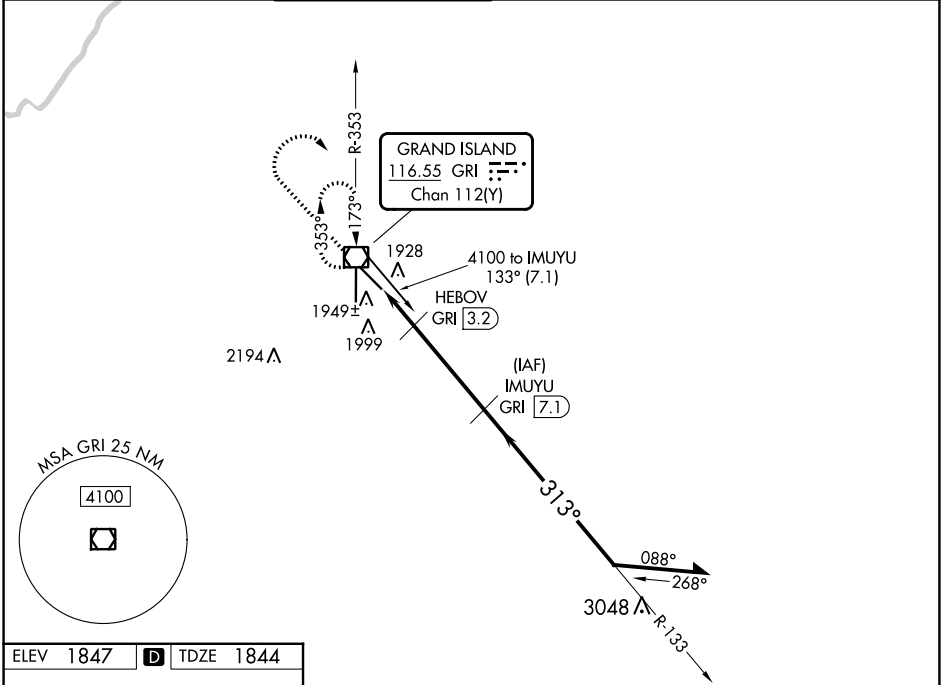
VOR/DME RWY 31

CENTRAL NEBRASKA RGNL (GRI)

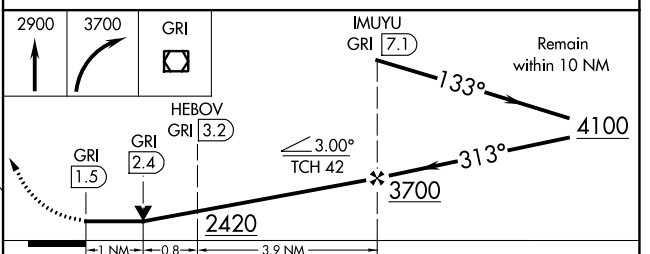
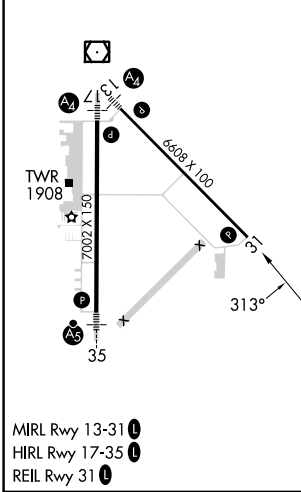
⚠ When local altimeter setting not received, use Aurora altimeter setting and increase all MDA 60 feet, increase Circling Cats C/D visibility ¼ SM. VDP NA when using Aurora altimeter setting.

MISSED APPROACH: Climb to 2900 then climbing right turn to 3700 direct GRI VOR/DME and hold.

ATIS 127.4	MINNEAPOLIS CENTER 119.4 278.8	GRAND ISLAND TOWER * 118.2 (CTAF) 259.3	GND CON 121.9 259.3	CLNC DEL 121.9	CLNC DEL 126.05 (when twr closed)	UNICOM 122.95
----------------------	--	---	-------------------------------	--------------------------	--	-------------------------



ELEV 1847	D	TDZE 1844
------------------	----------	------------------



CATEGORY	A	B	C	D
S-31	2200-1	356 (400-1)	2200-1¼	2200-1¼ 356 (400-1¼)
CIRCLING	2300-1	453 (500-1)	2400-1½ 553 (600-1½)	2560-2¼ 713 (800-2¼)

NC-2, 26 DEC 2024 to 23 JAN 2025

NC-2, 26 DEC 2024 to 23 JAN 2025