

APP CRS **212°**
 Rwy Idg **10502**
 TDZE **3669**
 Apt Elev **3680**

RNAV (RNP) Z RWY 21

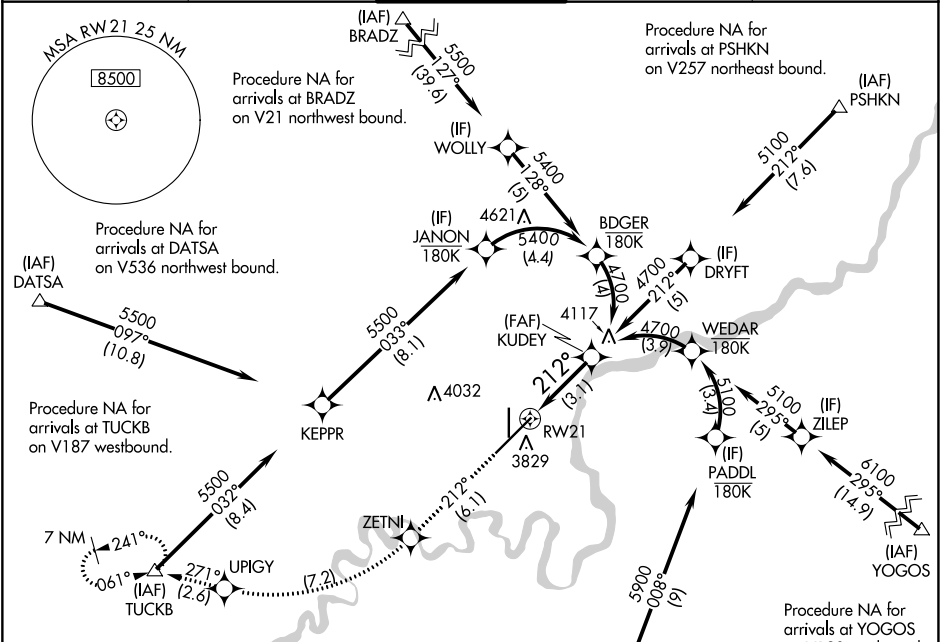
GREAT FALLS INTL (GTF')

RNP AR APCH - GPS.

▼ For uncompensated Baro-VNAV systems, procedure NA below -24°C or above 54°C.

MISSED APPROACH: Climb to 8000 on track 212° to ZETNI, right turn to UPIGY and on track 271° to TUCKB and hold, continue climb-in-hold to 8000.

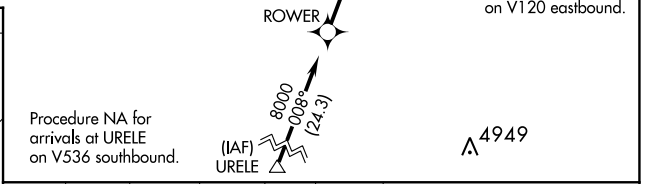
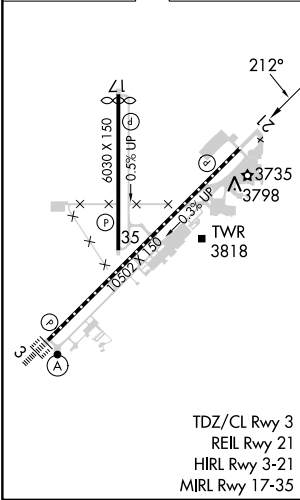
ATIS 126.6 269.0	GREAT FALLS APP CON 128.6 379.175	GREAT FALLS TOWER 118.7 282.2	GND CON 121.7 348.6	CLNC DEL 121.7 348.6
----------------------------	---	---	-------------------------------	--------------------------------



NW-1, 26 DEC 2024 to 23 JAN 2025

NW-1, 26 DEC 2024 to 23 JAN 2025

ELEV 3680 **D** TDZE 3669



8000	ZETNI	UPIGY	TUCKB	KUDEY
tr 212°	◆	◆	△	4700

VGSI and RNAV glidepath not coincident (VGSI Angle 3.00/TCH 75).

GP 3.00°
TCH 59

See planview for multiple IF locations.

3.1 NM

CATEGORY	A	B	C	D
RNP 0.10 DA		3942/45	273 (300-7%)	
RNP 0.30 DA		3992/50	323 (400-1)	

AUTHORIZATION REQUIRED