

APP CRS	Rwy Idg	10502
032°	TDZE	3680
	Apt Elev	3680

RNAV (RNP) Z RWY 3

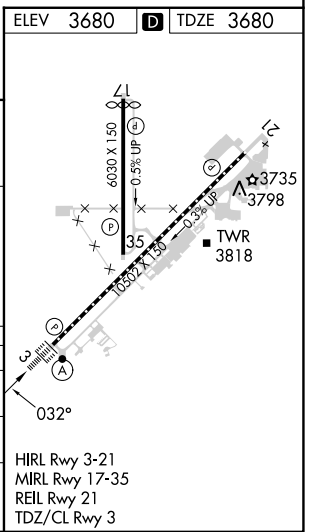
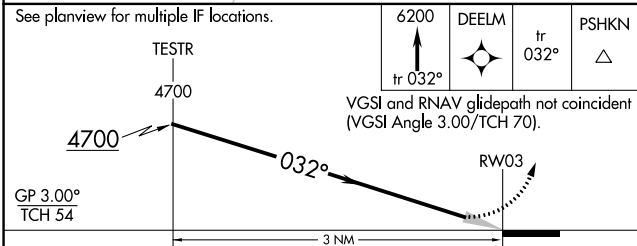
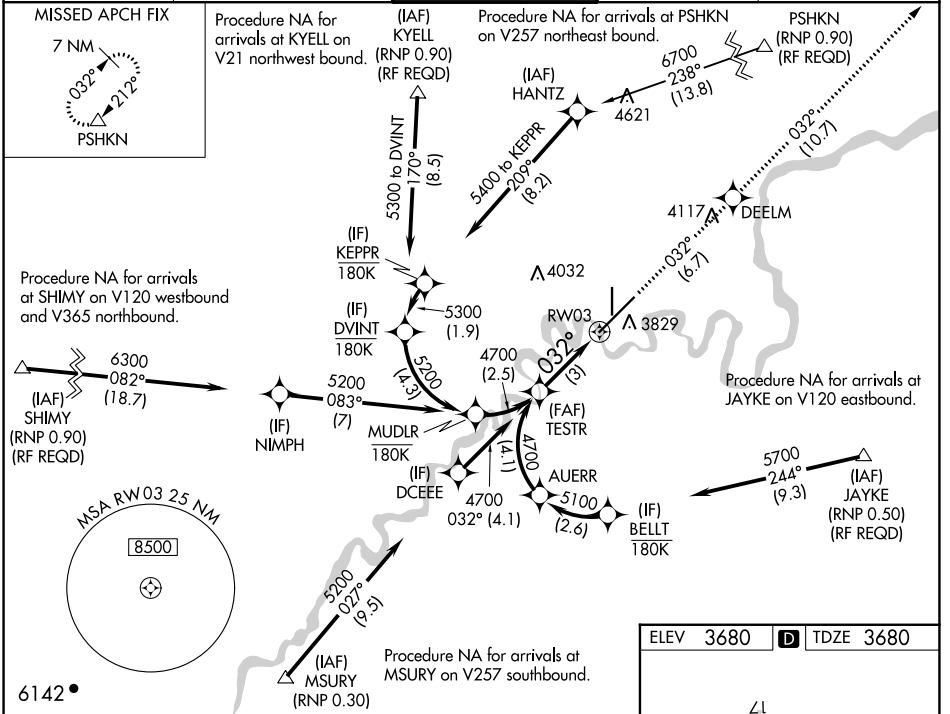
GREAT FALLS INTL (GTF)

GPS required. For uncompensated Baro-VNAV systems, procedure NA below -22°C or above 40°C. For inoperative ALS increase RNP 0.10 DA visibility all Cats to RVR 4500, increase RNP 0.30 DA visibility all Cats to RVR 6000.

ALS-F-2

MISSED APPROACH: Climb to 6200 on track 032° to DEELM and on track 032° to PSHKN and hold.

ATIS 126.6 269.0	GREAT FALLS APP CON 128.6 379.175	GREAT FALLS TOWER 118.7 282.2	GND CON 121.7 348.6	CLNC DEL 121.7 348.6
----------------------------	---	---	-------------------------------	--------------------------------



CATEGORY	A	B	C	D
RNP 0.10 DA		3990/24	310 (400-½)	
RNP 0.30 DA		4079/45	399 (400-¾)	

AUTHORIZATION REQUIRED

NW-1, 26 DEC 2024 to 23 JAN 2025

NW-1, 26 DEC 2024 to 23 JAN 2025