

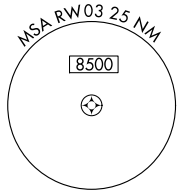
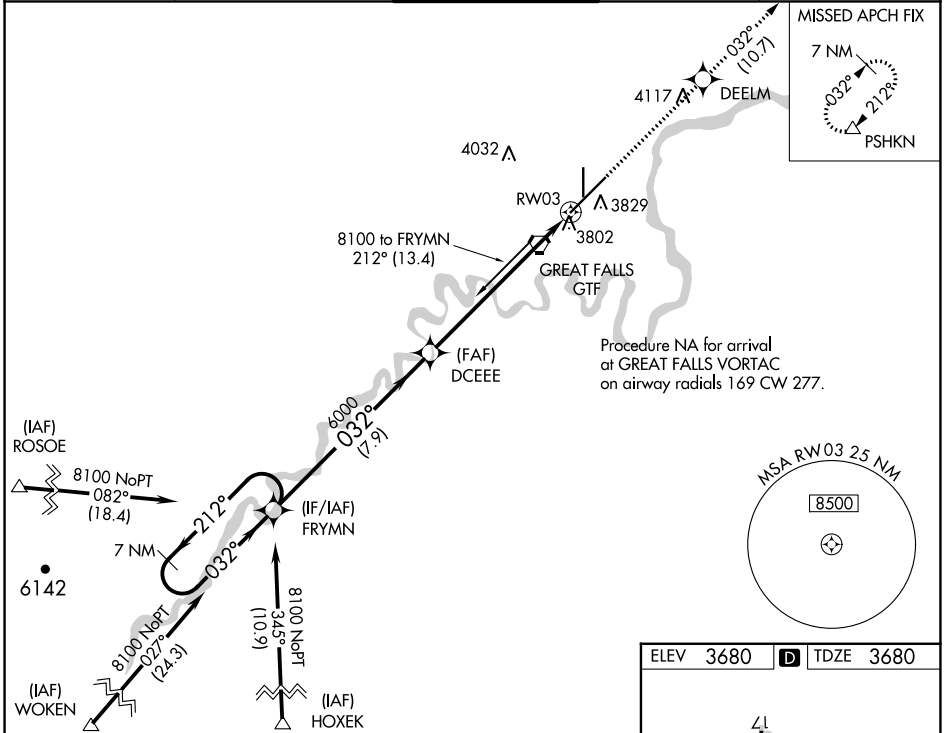
WAAS CH 70602 W03A	APP CRS 032°	Rwy Idg 10502 TDZE 3680 Apt Elev 3680
---------------------------------	------------------------	--

RNAV (GPS) Y RWY 3

GREAT FALLS INTL (GTF)

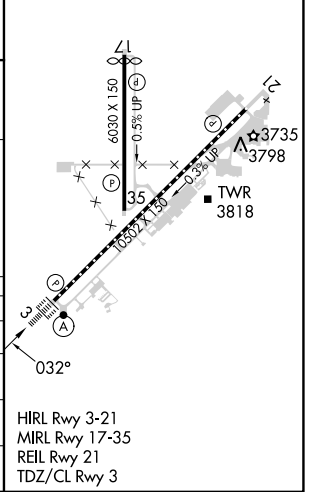
RNP APCH - GPS.	ALSF-2	MISSED APPROACH: Climb to 6200 direct DEELM and on track 032° to PSHKN and hold.
<p>⚠ For uncompensated Baro-VNAV systems, LNAV/VNAV NA below -25°C or above 50°C. For inop ALS, increase LNAV/VNAV all Cats visibility to RVR 4500.</p>		

ATIS 126.6 269.0	GREAT FALLS APP CON 128.6 379.175	GREAT FALLS TOWER 118.7 282.2	GND CON 121.7 348.6	CLNC DEL 121.7 348.6
----------------------------	---	---	-------------------------------	--------------------------------



ELEV 3680	D	TDZE 3680
-----------	---	-----------

VGSI and RNAV glidepath not coincident (VGSI Angle 3.00/TCH 70). 7 NM Holding Pattern FRYMN GP 3.00° TCH 54 *LNAV only			
8100 ← 212° → 032° →		6000 → 032° →	
7.9 NM		5.9 NM	
A		D	
CATEGORY	A	B	D
LPV DA	3880/18		200 (200-½)
LNAV/VNAV DA	3963/24		283 (300-½)
LNAV MDA	4140/24	460 (500-½)	4140/45 460 (500-¾)
CIRCLING	4140-1 460 (500-1)	4340-1¾ 660 (700-1¾)	4420-2¼ 740 (800-2¼)



NW-1, 26 DEC 2024 to 23 JAN 2025

NW-1, 26 DEC 2024 to 23 JAN 2025