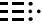



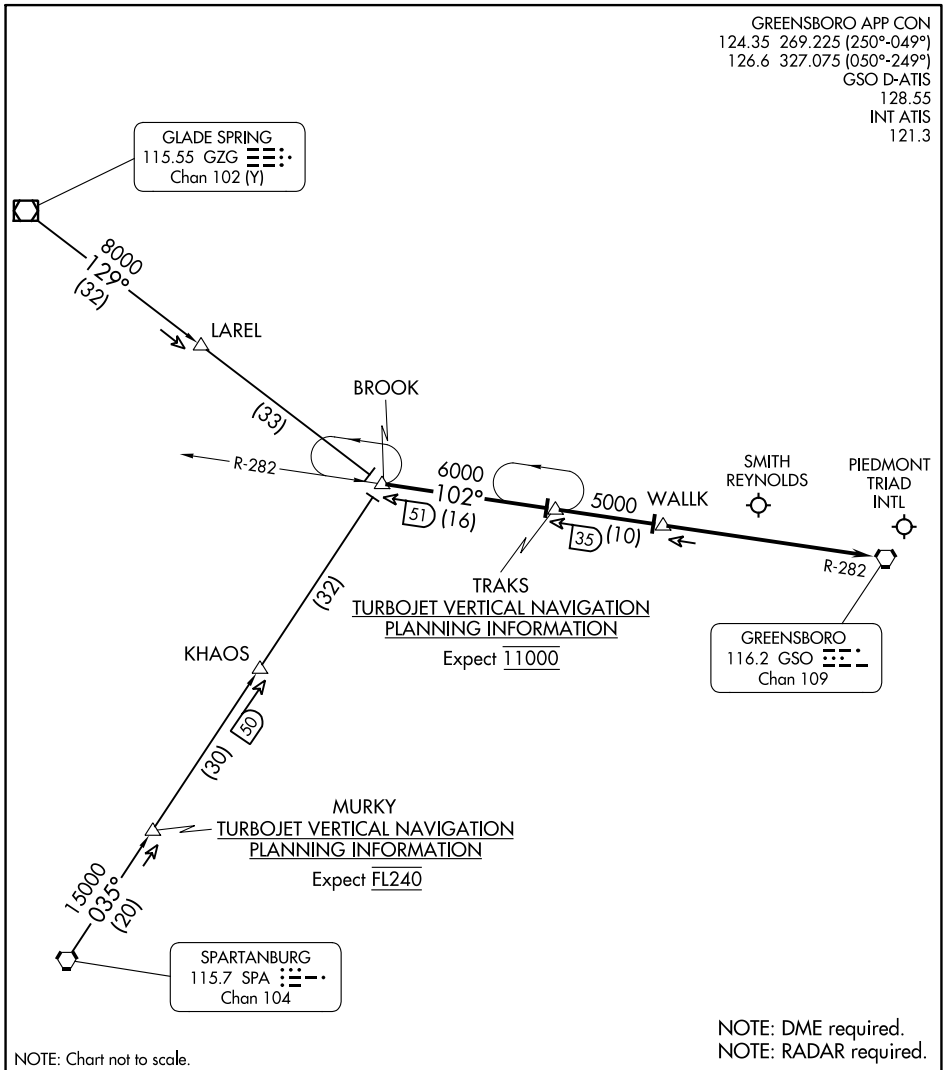
# BROOK FOUR ARRIVAL

GREENSBORO, NORTH CAROLINA

GREENSBORO APP CON  
 124.35 269.225 (250°-049°)  
 126.6 327.075 (050°-249°)  
 GSO D-ATIS  
 128.55  
 INT ATIS  
 121.3

GLADE SPRING  
 115.55 GZG   
 Chan 102 (Y)

GREENSBORO  
 116.2 GSO   
 Chan 109



SE-2, 26 DEC 2024 to 23 JAN 2025

SE-2, 26 DEC 2024 to 23 JAN 2025

NOTE: Chart not to scale.

NOTE: DME required.  
NOTE: RADAR required.

## ARRIVAL ROUTE DESCRIPTION

GLADE SPRING TRANSITION (GZG.BROOK4): From over GZG VOR/DME on GZG R-129 to BROOK INT. Thence. . . .

SPARTANBURG TRANSITION (SPA.BROOK4): From over SPA VORTAC on SPA R-035 to BROOK INT. Thence. . . .

. . . .from over BROOK via GSO R-282 to TRAKS, then on GSO R-282 to WALKK, then on GSO R-282 to GSO VORTAC. Expect RADAR vectors to final approach course.

# BROOK FOUR ARRIVAL

GREENSBORO, NORTH CAROLINA