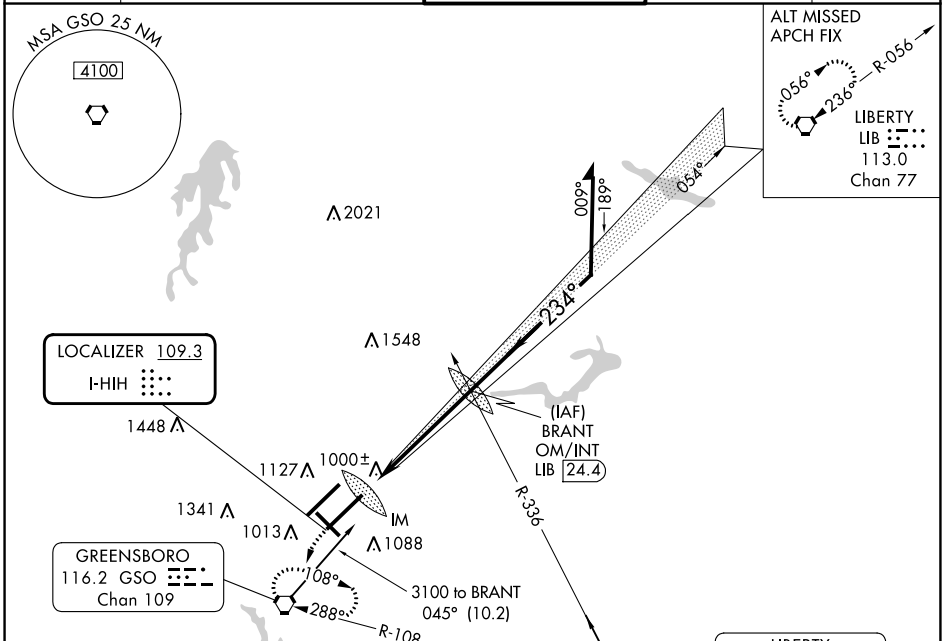


LOC I-HIH 109.3	APP CRS 234°	Rwy Idg TDZE Apt Elev	9601 889 926
---------------------------	------------------------	-----------------------------	---

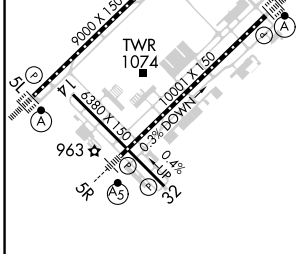
ILS or LOC RWY 23L

PIEDMONT TRIAD INTL (GSO)

Simultaneous approach authorized with Rwy 23R.		ALSIF-2	MISSED APPROACH: Climb to 1300 then climbing left turn to 3100 direct GSO VORTAC and hold, continue climb-in-hold to 3100.	
D-ATIS 128.55	GREENSBORO APP CON 124.35 269.225 (250°-049°) 126.6 327.075 (050°-249°)	GREENSBORO TOWER 119.1 290.325	GND CON 121.9 348.6	CLNC DEL 121.75



ELEV 926	D	TDZE 889
----------	---	----------



TDZ/CL Rws 5L, 23R and 23L
REIL Rwy 32
HIRL Rws 14-32, 5R-23L and 5L-23R
FAF to MAP 5.5 NM

Knots	60	90	120	150	180
Min:Sec	5:30	3:40	2:45	2:12	1:50

1300	3100	GSO	BRANT OM/INT LIB 24.4	Remain within 10 NM
VGSi and ILS glidepath not coincident 2729 (VGSi Angle 3.00/TCH 55).				
IM		2900	3100	GS 3.00° TCH 52
CATEGORY	A	B	C	D
S-ILS 23L	1089/18		200 (200-1/2)	
S-LOC 23L	1260/24		371 (400-1/2) 1260/40 371 (400-3/4)	
<input checked="" type="checkbox"/> CIRCLING	1440-1 514 (600-1)		1700-2 1/4 774 (800-2 1/4) 1700-2 1/2 774 (800-2 1/2)	

SE-2, 26 DEC 2024 to 23 JAN 2025

SE-2, 26 DEC 2024 to 23 JAN 2025