

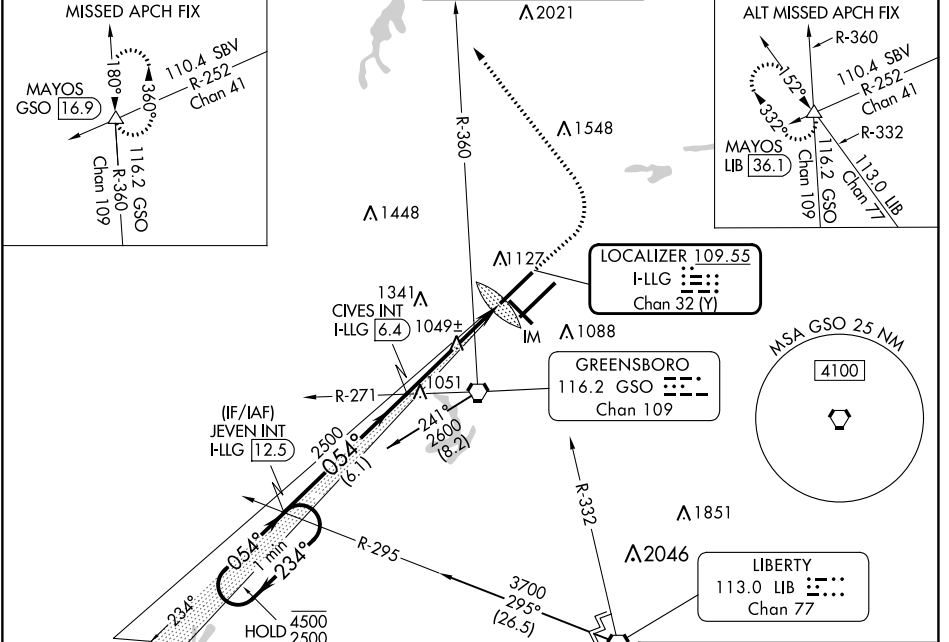
LOC/DME I-LLG	APP CRS	Rwy Idg	9000
109.55	054°	TDZE	916
Chan 32(Y)		Apt Elev	926

# ILS or LOC RWY 5L

PIEDMONT TRIAD INTL (GSO)

DME or RADAR required for procedure entry at LIB VORTAC.	ALSF-2	MISSED APPROACH: Climb to 1400 then climbing left turn to 3100 on heading 330° and GSO VORTAC R-360 to MAYOS INT/GSO 16.9 DME and hold.
Simultaneous approach authorized. For inop ALS, increase S-LOC 5L Cat C/D visibility to RVR 5500.		

D-ATIS	GREENSBORO APP CON	GREENSBORO TOWER	GND CON	CLNC DEL
128.55	124.35 269.225 126.6 327.075 (250°-049°) (050°-249°)	119.1 290.325	121.9 348.6	121.75

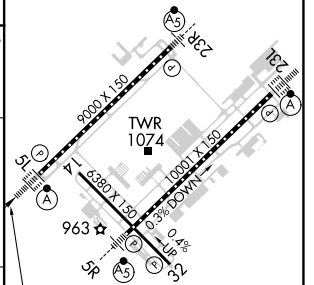
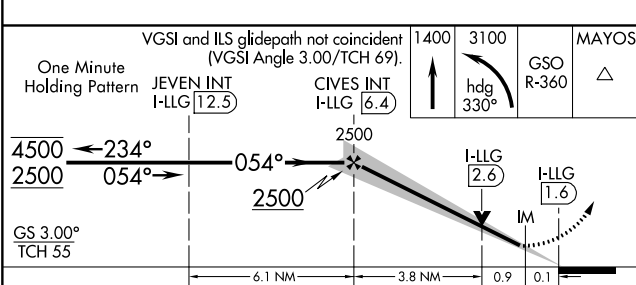


SE-2, 26 DEC 2024 to 23 JAN 2025

SE-2, 26 DEC 2024 to 23 JAN 2025

ELEV 926	TDZE 916
----------	----------

TDZ/CL Rwy 5L, 23R and 23L  
REIL Rwy 32  
HIRL Rwy 14-32, 5R-23L and 5L-23R



CATEGORY	A	B	C	D
S-ILS 5L		1116/18	200 (200-½)	
S-LOC 5L	1300/24	384 (400-½)	1300/35	384 (400-¾)
CIRCLING	1440-1	514 (600-1)	1700-2¼ 774 (800-2¼)	1700-2½ 774 (800-2½)

FAF to MAP 4.7 NM					
Knots	60	90	120	150	180
Min:Sec	4:42	3:08	2:21	1:53	1:34