

LOC/DME I-GFN 111.15 Chan 48 (Y)	APP CRS 325°	Rwy Idg 6380 TDZE 902 Apt Elev 926
--	------------------------	---

ILS Y or LOC Y RWY 32

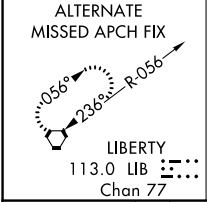
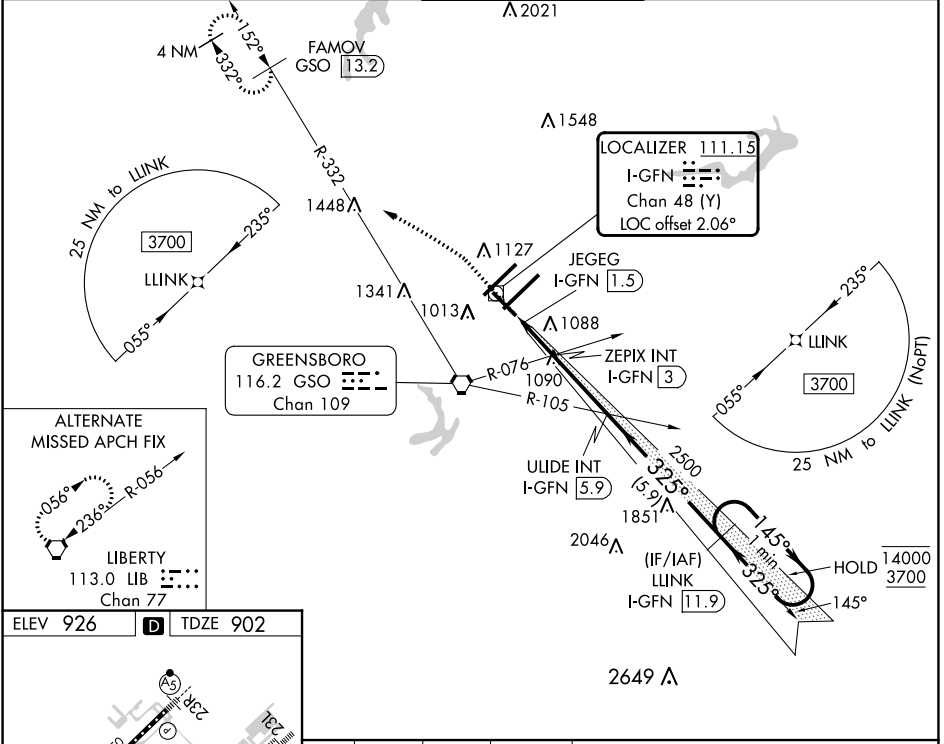
PIEDMONT TRIAD INTL (GSO)

RNAV 1-GPS or RADAR required for procedure entry.
DME required.

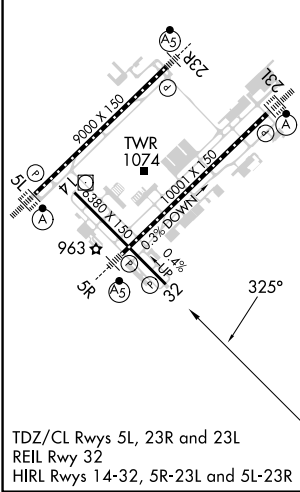
▼
▲ Rwy 32 helicopter visibility reduction below $\frac{3}{4}$ SM NA.

MISSED APPROACH: Climb to 1400 then climbing left turn to 3700 on heading 307° and GSO VORTAC R-332 to FAMOV/GSO 13.2 DME and hold.

D-ATIS 128.55	GREENSBORO APP CON 124.35 269.225 (250°-049°) 126.6 327.075 (050°-249°)	GREENSBORO TOWER 119.1 290.325	GND CON 121.9 348.6	CLNC DEL 121.75
-------------------------	---	--	-------------------------------	---------------------------



ELEV 926	D	TDZE 902
----------	----------	----------



1400	3700	GSO R-332	FAMOV GSO 13.2	ULIDE INT I-GFN 5.9	LLINK I-GFN 11.9	One Minute Holding Pattern
hdg 307°		145° → 4000 ← 325° 3700				
325°		GS 3.00° TCH 53				
→ 0.4 1 NM		← 5.9 NM				
CATEGORY	A	B	C	D		
S-ILS 32	1152- $\frac{3}{4}$		250 (300- $\frac{3}{4}$)			
S-LOC 32	1400-1	498 (500-1)	1400- $\frac{13}{8}$		498 (500- $\frac{13}{8}$)	
C CIRCLING	1440-1	514 (600-1)	1700- $\frac{2}{4}$ 774 (800- $\frac{2}{4}$)		1700- $\frac{2}{2}$ 774 (800- $\frac{2}{2}$)	

SE-2, 26 DEC 2024 to 23 JAN 2025

SE-2, 26 DEC 2024 to 23 JAN 2025