

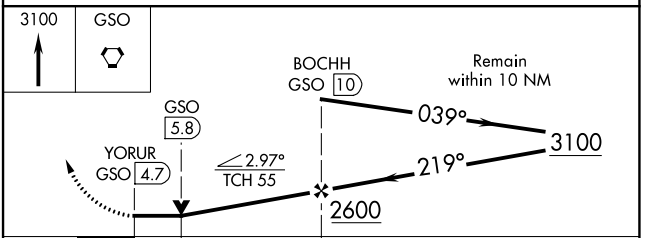
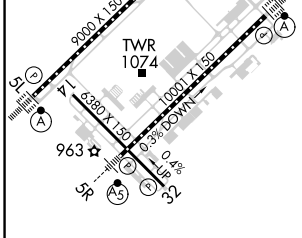
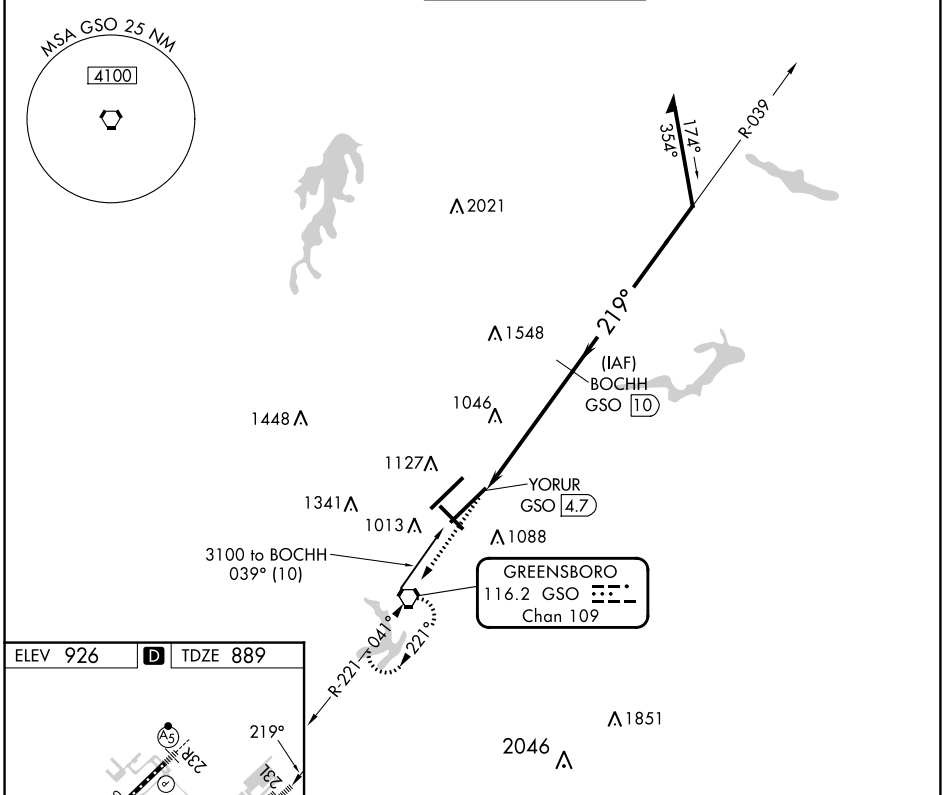
VORTAC GSO <b>116.2</b> Chan 109	APP CRS <b>219°</b>	Rwy Idg <b>9601</b> TDZE <b>889</b> Apt Elev <b>926</b>
--	------------------------	---

# VOR/DME RWY 23L

PIEDMONT TRIAD INTL (GSO)

	For inop ALS, increase S-23L Cat D visibility to RVR 6000.		MISSED APPROACH: Climb to 3100 direct GSO VORTAC and hold, continue climb-in-hold to 3100.

D-ATIS <b>128.55</b>	GREENSBORO APP CON <b>124.35 269.225</b> (250°-049°) <b>126.6 327.075</b> (050°-249°)	GREENSBORO TOWER <b>119.1 290.325</b>	GND CON <b>121.9 348.6</b>	CLNC DEL <b>121.75</b>
-------------------------	---	--	-------------------------------	---------------------------



CATEGORY	A	B	C	D
S-23L	1300/24	411 (400-½)	1300/40 411 (400-¾) 411 (400-1)	1300/50 411 (400-1)
CIRCLING	1440-1	514 (600-1)	1700-2¼ 774 (800-2¼)	1700-2½ 774 (800-2½)

SE-2, 26 DEC 2024 to 23 JAN 2025

SE-2, 26 DEC 2024 to 23 JAN 2025