

(BWALL2.BWALL) 22139

AL-179 (FAA)

DONALDSON FLD (GYH)
GREENVILLE, SOUTH CAROLINA

BWALL TWO DEPARTURE (RNAV)

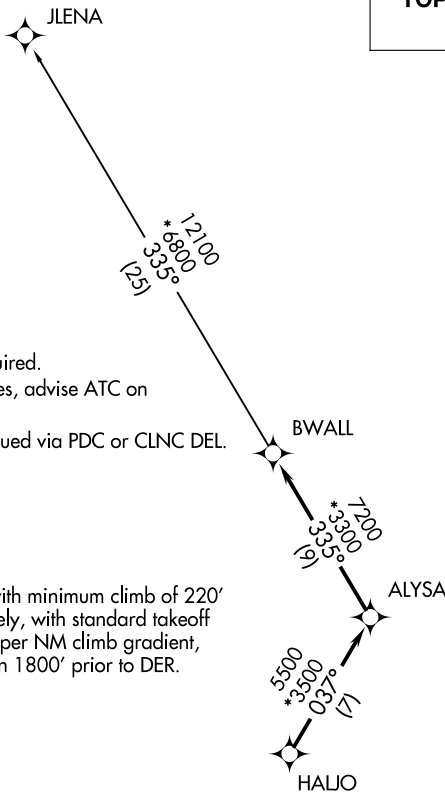
AWOS-3
127.325
CLNC DEL
121.4
GND CON
121.4
DONALDSON TOWER ★
133.325 269.25
UNICOM
122.7
GREER DEP CON ★
118.8 270.275

**TOP ALTITUDE:
3000**

- NOTE: For turbojets only.
- NOTE: RNAV 1.
- NOTE: RADAR required.
- NOTE: DME/DME/IRU or GPS required.
- NOTE: If unable to accept climb rates, advise ATC on initial contact.
- NOTE: Transponder code will be issued via PDC or CLNC DEL.

TAKEOFF MINIMUMS

Rwy 23: Standard.
Rwy 5: 300-1¾ or standard with minimum climb of 220' per NM to 1300, or alternatively, with standard takeoff minimums and a normal 200' per NM climb gradient, takeoff must occur no later than 1800' prior to DER.



NOTE: Chart not to scale.



DEPARTURE ROUTE DESCRIPTION

TAKEOFF ALL RUNWAYS: Climb on assigned heading for RADAR vectors to HALJO, then on depicted route to BWALL, thence. . . .

. . . .on JLENA transition. Maintain 3000. Expect clearance to filed altitude within 10 minutes after departure.

JLENA TRANSITION (BWALL2.JLENA)

BWALL TWO DEPARTURE (RNAV)

(BWALL2.BWALL) 25APR19

GREENVILLE, SOUTH CAROLINA
DONALDSON FLD (GYH)

SE-2, 26 DEC 2024 to 23 JAN 2025

SE-2, 26 DEC 2024 to 23 JAN 2025