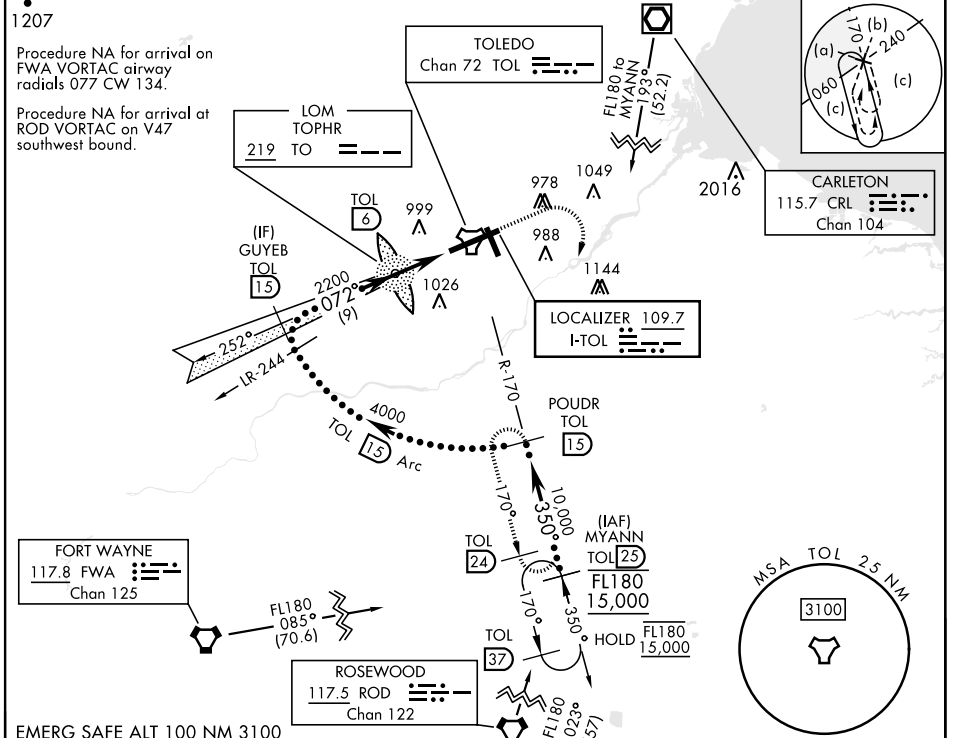


HI-ILS Y or LOC Y RWY 7

LOC I-TOL 109.7	APCH CRS 072°	Rwy ldg 10,599 TDZE 683 Arpt Elev 684	[USAF]	EUGENE F KRANZ TOLEDO EXPRESS (KTOL)
---------------------------	-------------------------	--	--------	--------------------------------------

DME required	ALSIF-2	MISSED APPROACH: Climb to 2500, then climbing right turn to 3000 on TOL TACAN R-170 to POUDR/15 DME and hold.
<p>*When ALS inop, increase CAT E RVR to 40, vis to 3/4 mile.</p> <p>**When ALS inop, increase CAT E RVR to 60, vis to 1 1/4 miles.</p>		

ATIS 118.75 290.225	TOLEDO APP CON 126.1 317.55	TOLEDO TOWER 118.1 285.4	GND CON 121.9 348.6	CLNC DEL 121.75 348.6	ASR
-------------------------------	---------------------------------------	------------------------------------	-------------------------------	---------------------------------	-----



EMERG SAFE ALT 100 NM 3100			ELEV 684	TDZE 683
<p>GUYEB TOL 15</p> <p>4000</p> <p>072°</p> <p>2200</p> <p>LOM TOL 6</p> <p>2162</p> <p>TOL 2.7</p> <p>TOL 1.6</p> <p>4.4 NM</p>			<p>2500</p> <p>3000</p> <p>POUDR TOL 15</p>	<p>794 TWR 750</p> <p>91</p> <p>725</p> <p>778</p> <p>34</p> <p>726 ± A</p> <p>775 ± A</p>
GS 3.00°	TCH 59			
CATEGORY	C	D	E	
S-ILS 7 *	886/18	203 (300-1/2)		
S-LOC 7 **	1140/45	457 (500-7/8)		
CIRCLING	1300-1 3/4 616 (700-1 3/4)	1400-2 1/4 716 (800-2 1/4)	1400-2 1/2 716 (800-2 1/2)	<p>HIRL Rwy 7-25</p> <p>MIRL Rwy 16-34</p> <p>REIL Rwy 16, 34</p> <p>TDZL/CL Rwy 7</p> <p>Rwy 7 ldg 10,599'</p> <p>Rwy 25 ldg 10,599'</p>

HI-ILS Y or LOC Y RWY 7

EC-2, 26 DEC 2024 to 23 JAN 2025

EC-2, 26 DEC 2024 to 23 JAN 2025