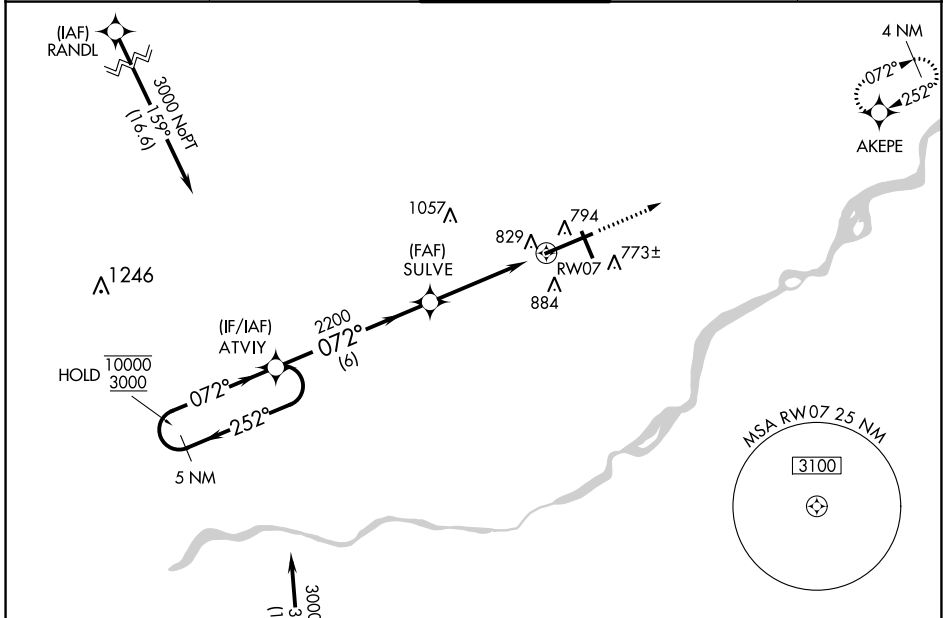


WAAS CH 99399 W07A	APP CRS 072°	Rwy Idg TDZE Apt Elev	10599 683 683
--	------------------------	-----------------------------	--

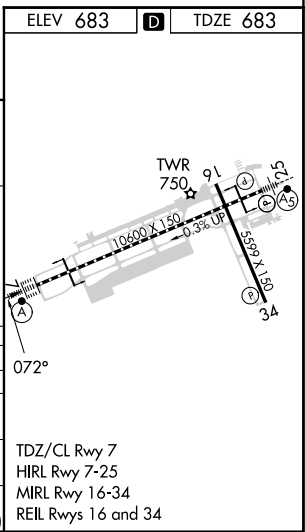
RNAV (GPS) RWY 7

EUGENE F KRANZ TOLEDO EXPRESS (TOL)

RNP APCH.		ALSF-2		MISSED APPROACH: Climb to 3000 direct AKEPE and hold.											
<p>T For uncompensated Baro-VNAV systems, LNAV/VNAV NA below -17°C or above 52°C. A For inop ALS, increase LPV all Cats visibility to RVR 5000. Increase LNAV/VNAV Cat E and LNAV Cat E visibility to 1½ SM. ASR</p>		<table border="1"> <tr> <td>ATIS</td> <td>TOLEDO APP CON</td> <td>TOLEDO TOWER</td> <td>GND CON</td> <td>CLNC DEL</td> </tr> <tr> <td>118.75 290.225</td> <td>134.35 317.55</td> <td>118.1 285.4</td> <td>121.9 348.6</td> <td>121.75 348.6</td> </tr> </table>		ATIS	TOLEDO APP CON	TOLEDO TOWER	GND CON	CLNC DEL	118.75 290.225	134.35 317.55	118.1 285.4	121.9 348.6	121.75 348.6		
ATIS	TOLEDO APP CON	TOLEDO TOWER	GND CON	CLNC DEL											
118.75 290.225	134.35 317.55	118.1 285.4	121.9 348.6	121.75 348.6											



5 NM Holding Pattern		3000		AKEPE	
10000 ← 252° 3000 → 072°		ATVIY 2200		*LNAV only. *1.3 NM to RW07	
GP 3.00° TCH 55		SULVE		RW07	
		6 NM		3.2 NM	
				1.3	
CATEGORY	A	B	C	D	E
LPV DA	1018/40 335 (400-¾)				
LNAV/VNAV DA	1129/50 446 (500-1)				
LNAV MDA	1140/24	457 (500-½)	1140/40 457 (500-¾)	1140/50	457 (500-1)
CIRCLING	1200-1	517 (600-1)	1300-1¾ 617 (700-1¾)	1360-2¼ 677 (700-2¼)	1360-2½ 677 (700-2½)



EC-2, 26 DEC 2024 to 23 JAN 2025

EC-2, 26 DEC 2024 to 23 JAN 2025