

# ILS or LOC Y RWY 8

LOC I-LFI <b>109.9</b>	APCH CRS <b>078°</b>	Rwy Ldg <b>10,002</b>
		TDZE <b>8</b>
		Arprt Elev <b>8</b>

[USAF]

LANGLEY AFB (KLFJ)

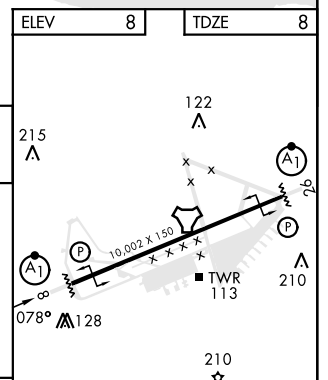
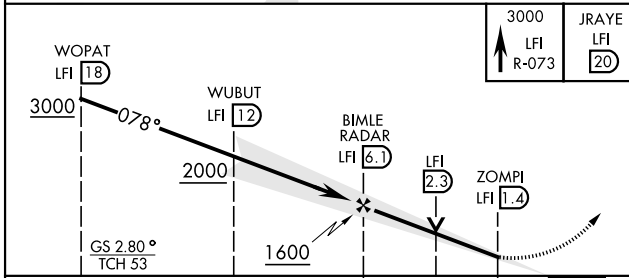
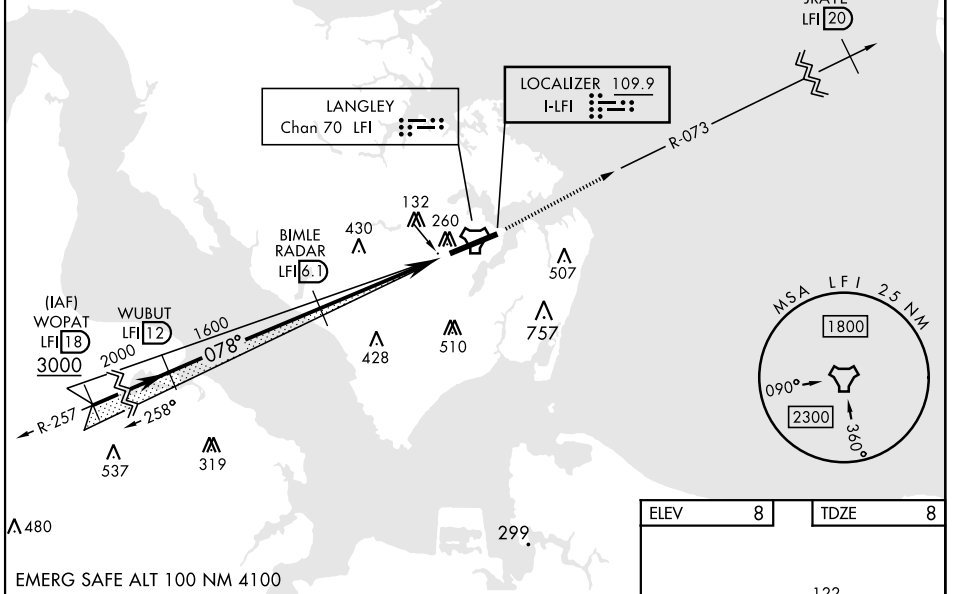
RADAR or DME required		ALSF-1 
<p>▼ * When ALS inop, increase RVR to 40 and vis to 3/4 mile.</p> <p>** When ALS inop, increase CAT AB RVR to 55 and vis to 1 mile, CAT CDE vis to 1 3/8 miles.</p>		MISSED APPROACH: Climb to 3000 via LFI R-073 to 20 DME (JRAYE), then as instructed by ATC.

ATIS * <b>270.1</b>	NORFOLK APP CON <b>125.7 335.625</b>	TOWER * <b>125.0 253.5</b>	GND CON <b>121.7 275.8</b>	CLNC DEL <b>118.85 257.625</b>
------------------------	---	-------------------------------	-------------------------------	-----------------------------------

\*\*\* Circling not authorized S of Rwy 8-26.

Expect RADAR vectors to IAF or Final Approach course.

Glideslope unusable for coupled approach below 750' MSL.



CATEGORY	A		B		C		D		E	
S-ILS 8 *	208/24		200		(200-1/2)					
S-LOC 8 **	480/24		472 (500-1/2)		480/50		472		(500-1)	
CIRCLING ***	540-1		580-1		700-2		760-2 1/2		760-2 3/4	
	532 (600-1)		572 (600-1)		692 (700-2)		752 (800-2 1/2)		752 (800-2 3/4)	

HIRL Rwy 8-26					
FAF to MAP 4.7 NM					
Knots	60	90	120	150	180
Min:Sec	4:42	3:08	2:21	1:53	1:34

HAMPTON, VIRGINIA 37°05'N-76°22'W LANGLEY AFB (KLFJ)

Amdt 7 11AUG22

# ILS or LOC Y RWY 8

NE-3, 26 DEC 2024 to 23 JAN 2025

NE-3, 26 DEC 2024 to 23 JAN 2025