

HAMPTON, VIRGINIA

RNAV (GPS) RWY 26

WAAS CH 41171 W26A	APCH CRS 258°	Rwy ldg TDZE Arprt Elev	10,002 8 8
--------------------------	------------------	-------------------------------	------------------

-(USAF)

LANGLEY AFB (KLFJ)

RNP APCH

▼ * When ALS inop increase RVR to 40, vis to 3/4 mile.
** When ALS inop, increase RVR to 60, vis to 1 1/8 miles.

ALS-1

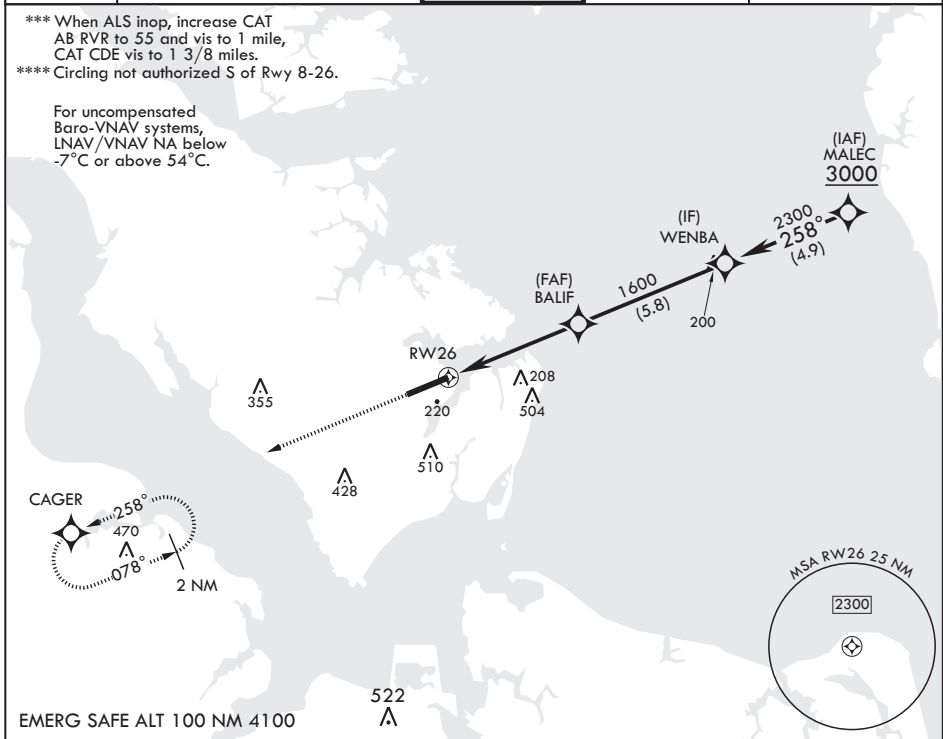


MISSED APPROACH: Climb to 3000 on course 258° to CAGER WPT and hold.

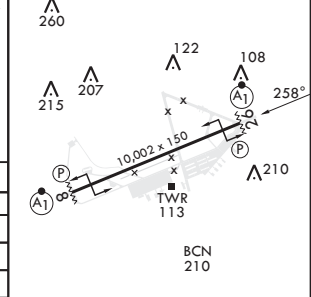
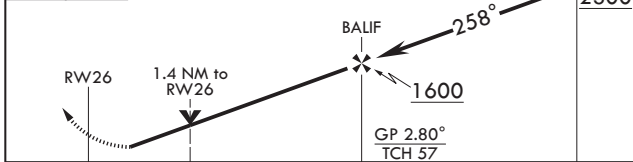
ATIS★ 270.1	NORFOLK APP CON/DEP CON 125.7 335.625	TOWER★ 125.0 253.5	GND CON 121.7 275.8	CLNC DEL 118.85 257.625
----------------	--	-----------------------	------------------------	----------------------------

*** When ALS inop, increase CAT
AB RVR to 55 and vis to 1 mile,
CAT CDE vis to 1 3/8 miles.
**** Circling not authorized S of Rwy 8-26.

For uncompensated
Baro-VNAV systems,
LNAV/VNAV NA below
-7°C or above 54°C.



3000 ↑ CAGER	WENBA 2300	ELEV 8	TDZE 8
--------------------	---------------	--------	--------



CATEGORY	A	B	C	D	E
LPV DA*	208/24		200	(200-1/2)	
LNAV/VNAV DA**	404/35		396	(400-5/6)	
LNAV MDA***	480/24	472 (500-1/2)	480/50	472	(500-1)
◻ CIRCLING****	540-1 532 (600-1)	580-1 572 (600-1)	700-2 692 (700-2)	760-2 1/2 752 (800-2 1/2)	760-2 3/4 752 (800-2 3/4)

HIRL all Rwys

HAMPTON, VIRGINIA
Amdt 7 28DEC23

37°05'N - 76°22'W

LANGLEY AFB (KLFJ)

RNAV (GPS) RWY 26

NE-3, 26 DEC 2024 to 23 JAN 2025

NE-3, 26 DEC 2024 to 23 JAN 2025