

HAMPTON, VIRGINIA

# RNAV (GPS) RWY 8

WAAS CH 41170 W08A	APCH CRS 078°	Rwy ldg TDZE Arprt Elev	10,002 8 8
--------------------------	------------------	-------------------------------	------------------

-(USAF)

LANGLEY AFB (KLFJ)

RNP APCH

▲ \* When ALS inop, increase RVR to 40, vis to 3/4 mile.  
 \*\* When ALS inop, increase vis to 1 3/8 miles.

ALSF-1



MISSED APPROACH: Climb to 3000 on course 073° to JRAYE, then as instructed by ATC.

ATIS★ 270.1	NORFOLK APP CON/DEP CON 125.7 335.625	TOWER★ 125.0 253.5	GND CON 121.7 275.8	CLNC DEL 118.85 257.625
----------------	--	-----------------------	------------------------	----------------------------

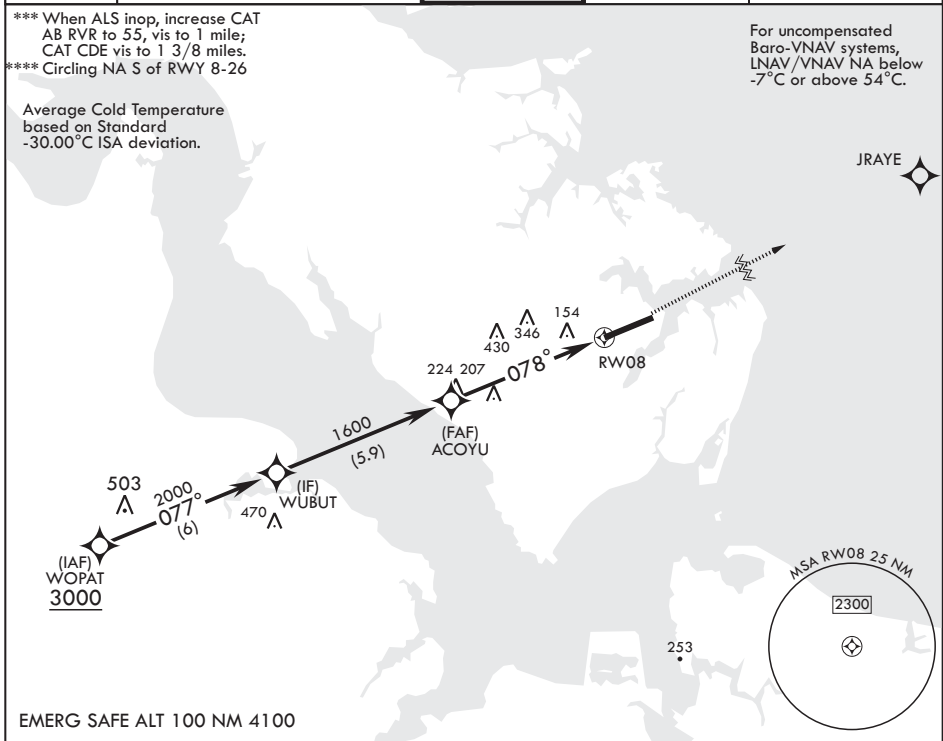
\*\*\* When ALS inop, increase CAT  
 AB RVR to 55, vis to 1 mile;  
 CAT CDE vis to 1 3/8 miles.  
 \*\*\*\* Circling NA S of RWY 8-26

For uncompensated Baro-VNAV systems,  
 LNAV/VNAV NA below  
 -7°C or above 54°C.

Average Cold Temperature  
 based on Standard  
 -30.00°C ISA deviation.

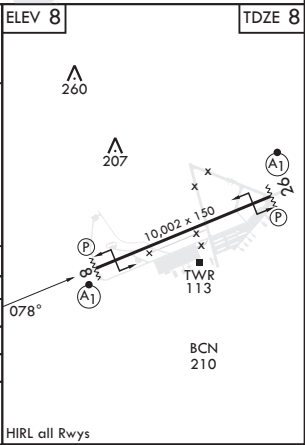
NE-3, 26 DEC 2024 to 23 JAN 2025

NE-3, 26 DEC 2024 to 23 JAN 2025



EMERG SAFE ALT 100 NM 4100

WUBUT	3000	JRAYE	ELEV 8	TDZE 8	
2000	ACOYU	1.4 NM to RWY 08	RWY 08		
GP 2.80° TCH 53	1600	5.2 NM			
CATEGORY	A	B	C	D	E
LPV DA*	208/24		200	(200-½)	
LNAV/VNAV DA**	472/50		464	(500-1)	
LNAV MDA***	480/24	472 (500-½)	480/50	472	(500-1)
▲ CIRCLING****	540-1 532 (600-1)	580-1 572 (600-1)	700-2 692 (700-2)	760-2½ 752 (800-2½)	760-2¾ 752 (800-2¾)



HAMPTON, VIRGINIA

37°05'N - 76°22'W

LANGLEY AFB (KLFJ)

Amdt 1 11AUG22

# RNAV (GPS) RWY 8