


LOC I-CXY 109.1	APP CRS 082°	Rwy Idg TDZE Apt Elev	5000 342 347
---------------------------	------------------------	-----------------------------	---

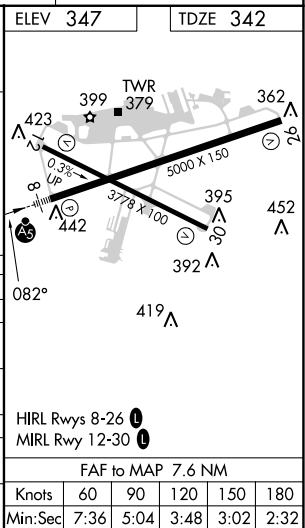
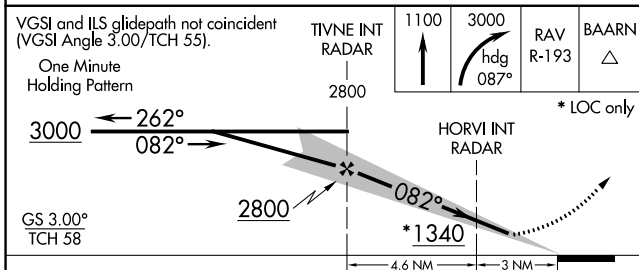
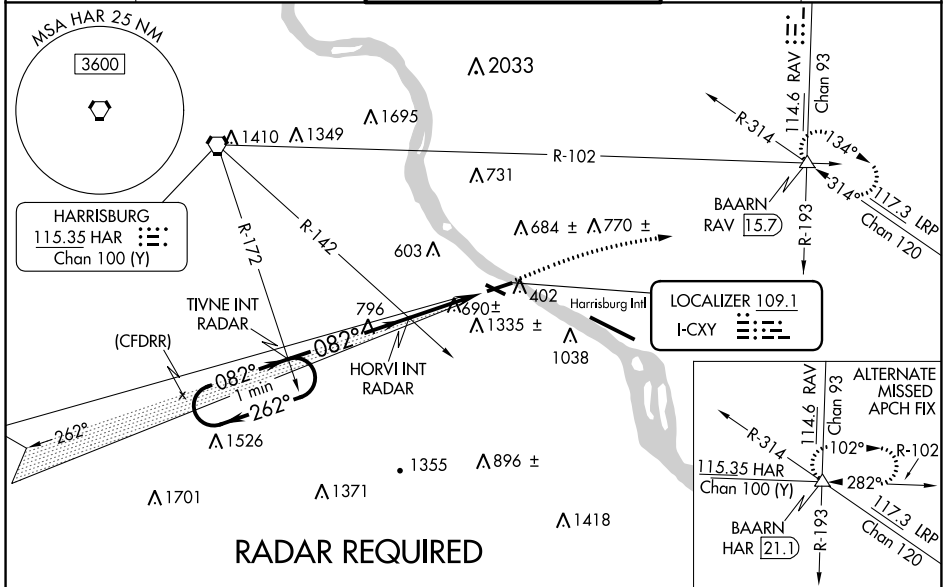
ILS or LOC RWY 8



CAPITAL CITY (CXY)

⚠ When local altimeter setting not received, use Harrisburg Intl altimeter setting. For inop MALS/R, increase S-ILS-8 all Cats visibility to 1 3/4 mile and S-LOC-8 Cat A and HORVI FIX minimums Cat A and B visibility to 1 mile. Night landing Rwy 12, 30 NA. Helicopter visibility reduction below 3/4 SM NA.

MALS/R  MISSED APPROACH: Climb to 1100 then climbing right turn to 3000 on heading 087° and on RAV VORTAC R-193 to BAARN INT/RAV 15.7 DME and hold.

ATIS 134.95	HARRISBURG APP CON 124.1 273.525	CAPITAL CITY TOWER ★ 119.5 (CTAF) 257.8	GND CON 121.9	UNICOM 122.95
-----------------------	--	---	-------------------------	-------------------------



CATEGORY	A	B	C	D
S-ILS 8		834-1 1/4	492 (500-1 1/4)	
S-LOC 8	1340-1	1005 (1000-1)	1340-2 1/2	1005 (1000-2 1/2)
 CIRCLING	1340-1 1/4 993 (1000-1 1/4)	1700-1 1/2 1353 (1400-1 1/2)	1700-3	1353 (1400-3)
HORVI FIX MINIMUMS				
S-LOC 8	940-1	605 (600-1)	940-1 3/8	605 (600-1 3/8)
 CIRCLING	1200-1 1/4 853 (900-1 1/4)	1700-1 1/2 1353 (1400-1 1/2)	1700-3	1353 (1400-3)

NE-4, 26 DEC 2024 to 23 JAN 2025

NE-4, 26 DEC 2024 to 23 JAN 2025