

LOC I-MDT 110.9	APP CRS 128°	Rwy Idg TDZE Apt Elev	8070 308 310
---------------------------	------------------------	-----------------------------	---

ILS RWY 13 (CAT II & III)

HARRISBURG INTL (MDT)

☑ -17°C

▽ CAT II: RVR 1000 authorized with specific OPSPEC, MSPEC, or LOA approval and use of autoland or HUD to touchdown.

ALSF-2

MISSED APPROACH: Climb to 900 then climbing left turn to 3000 on heading 070° and on ETX VOR/DME R-253 to KUPPS INT/ETX 39.3 DME and hold.

ATIS 118.8	HARRISBURG APP CON (080°-179°) 126.45 281.525 (180°-329°) 124.1 273.525 (330°-079°) 118.25 269.45	HARRISBURG INTL TOWER 124.8 269.35	GND CON 121.7 348.6
-----------------------------	--	---	--------------------------------------

ALTERNATE MISSED APCH FIX

HARRISBURG HAR **115.35**
Chan 100 (Y)

R-281 101°

Procedure NA for arrival on HAR VORTAC airway radials 102 CW 157 and at HAR VORTAC on V12 eastbound.

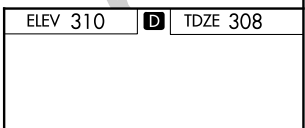
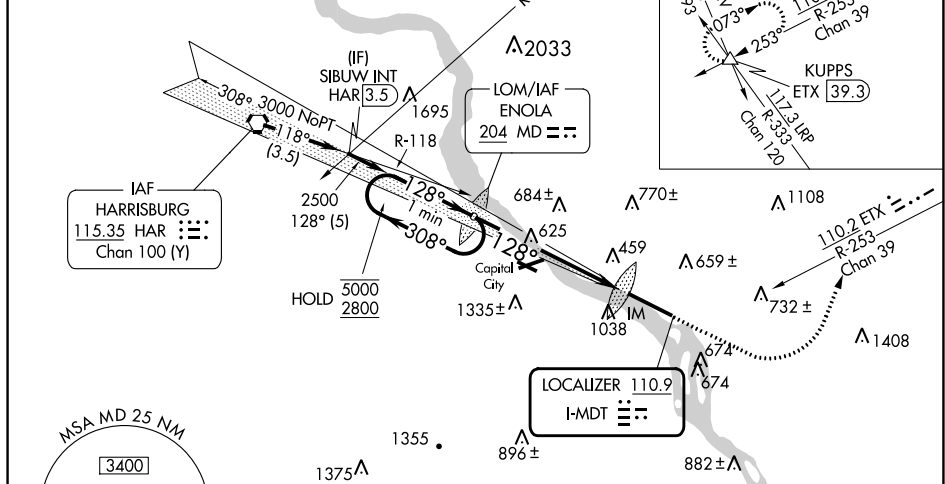
MISSED APCH FIX

114.6 RAV Chan 39

110.2 ETX R-253 Chan 39

KUPPS ETX 39.3

113.1 RRP R-353 Chan 120



CATEGORY	A	B	C	D
S-ILS 13	CAT II RA 100/12 100 DA 408			
S-ILS 13	CAT III		RVR 06	

CATEGORY II & III ILS - SPECIAL AIRCREW & AIRCRAFT CERTIFICATION REQUIRED

TDZ/CL Rwy 13
REIL Rwy 31
HIRL Rwy 13-31

NE-4, 26 DEC 2024 to 23 JAN 2025

NE-4, 26 DEC 2024 to 23 JAN 2025