

LOC I-MDT 110.9	APP CRS 128°	Rwy Idg 8070
		TDZE 308
		Apt Elev 310

ILS RWY 13 (SA CAT I)

HARRISBURG INTL (MDT)

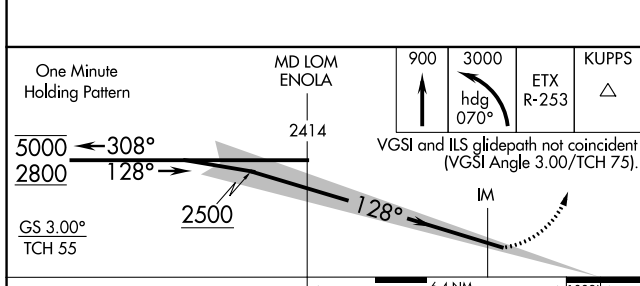
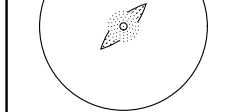
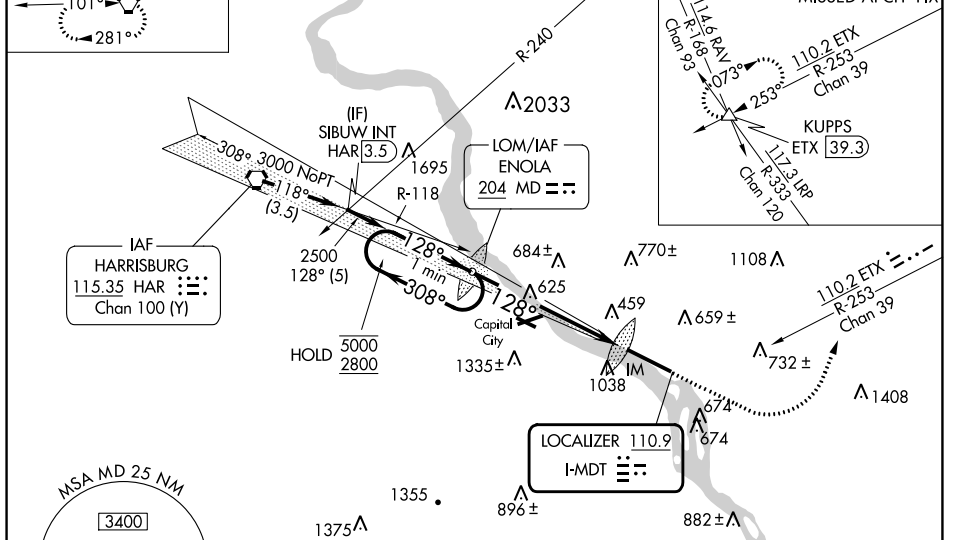
ALSF-2
Requires specific OPSPEC, MSPEC, or LOA approval.

MISSED APPROACH: Climb to 900 then climbing left turn to 3000 on heading 070° and on ETX VOR/DME R-253 to KUPPS INT/ETX 39.3 DME and hold.

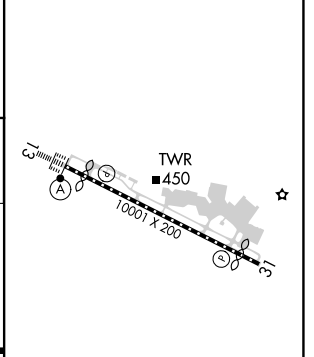
ATIS 118.8	HARRISBURG APP CON (080°-179°) 126.45 281.525 (180°-329°) 124.1 273.525 (330°-079°) 118.25 269.45	HARRISBURG INTL TOWER 124.8 269.35	GND CON 121.7 348.6
----------------------	---	--	-------------------------------

ALTERNATE MISSED APCH FIX
HARRISBURG HAR
115.35
Chan 100 (Y)

Procedure NA for arrival on HAR VORTAC airway radials 102 CW 157 and at HAR VORTAC on V12 eastbound.



ELEV 310	D	TDZE 308
----------	----------	----------



CATEGORY	A	B	C	D
S-ILS 13	RA 150/14 150 DA 458			

SA CATEGORY I ILS - SPECIAL AIRCREW & AIRCRAFT CERTIFICATION REQUIRED

TDZ/CL Rwy 13
REIL Rwy 31
HIRL Rwy 13-31

NE-4, 26 DEC 2024 to 23 JAN 2025

NE-4, 26 DEC 2024 to 23 JAN 2025