

LOC I-MDT	APP CRS	Rwy Idg	8070
110.9	128°	TDZE	308
		Apt Elev	310

ILS or LOC RWY 13

HARRISBURG INTL (MDT)

ALSF-2 MISSED APPROACH: Climb to 900 then climbing left turn to 3000 on heading 070° and on ETX VOR/DME R-253 to KUPPS INT/ETX 39.3 DME and hold.

Circle Circling NA south of Rwy 13-31.

Temperature -17°C

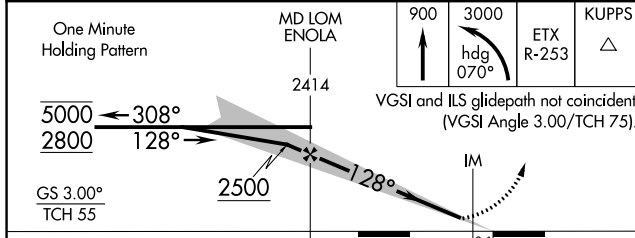
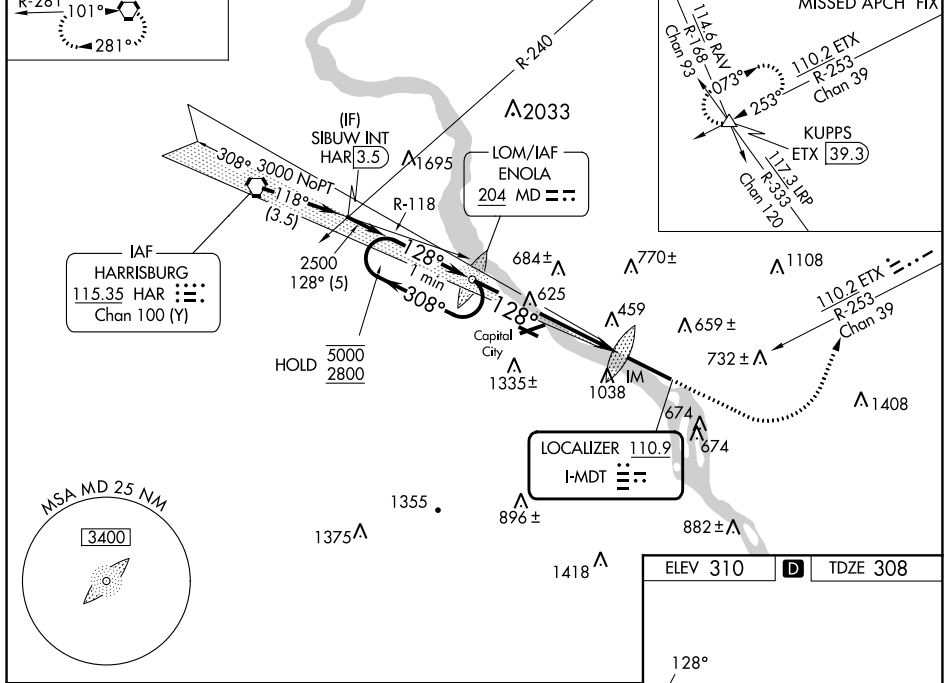
ATIS	HARRISBURG APP CON		HARRISBURG INTL TOWER		GND CON	
118.8	(080°-179°)	126.45	281.525	124.8	269.35	121.7 348.6
	(180°-329°)	124.1	273.525			
	(330°-079°)	118.25	269.45			

ALTERNATE MISSED APCH FIX

HARRISBURG HAR **115.35** Chan 100 (Y)

R-281 101°

Procedure NA for arrival on HAR VORTAC airway radials 102 CW 157 and at HAR VORTAC on V12 eastbound.



ELEV 310	TDZE 308
----------	----------

CATEGORY	A	B	C	D
S-ILS 13	508/18		200 (200-½)	
S-LOC 13	900/24	592 (600-½)	900-1¼	592 (600-1¼)
CIRCLING	900-1 590 (600-1)	980-1 670 (700-1)	1000-2 690 (700-2)	1420-3 1110 (1200-3)

TDZ/CL Rwy 13

REIL Rwy 31

HIRL Rwy 13-31

FAF to MAP 6.4 NM

Knots	60	90	120	150	180
Min:Sec	6:24	4:16	3:12	2:34	2:08

NE-4, 26 DEC 2024 to 23 JAN 2025

NE-4, 26 DEC 2024 to 23 JAN 2025