

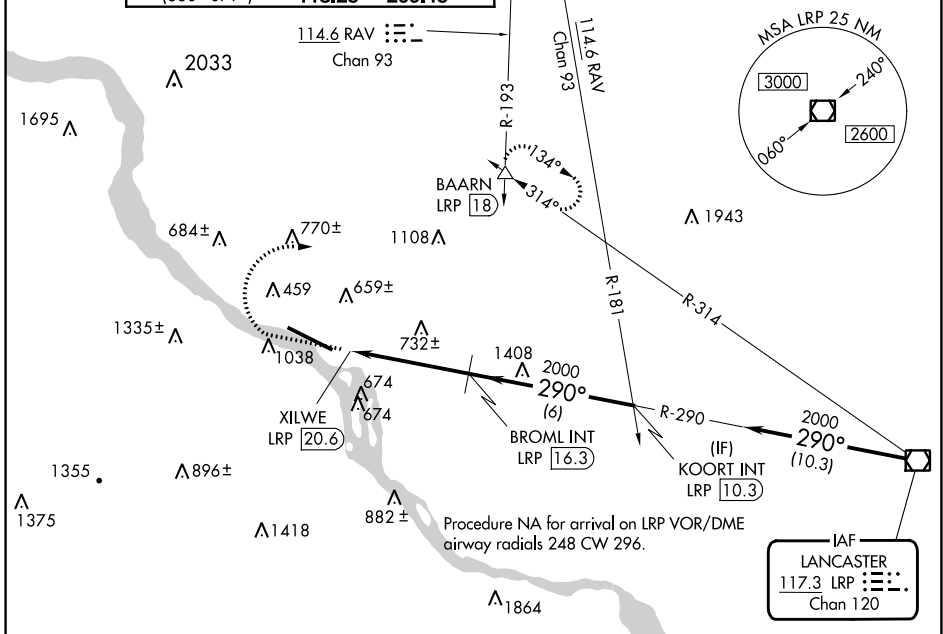
VOR/DME LRP 117.3 Chan 120	APP CRS 290°	Rwy Idg TDZE 308 Apt Elev 310
--	------------------------	---

VOR RWY 31

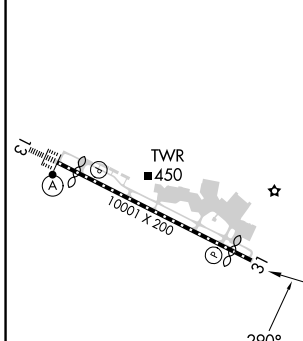
HARRISBURG INTL (MDT)

⚠ Circling NA south of Rwy 13-31. Rwy 31 helicopter visibility reduction below 3/4 SM NA.
⚠ -17°C
 MISSED APPROACH: Climb to 1500 then climbing right turn to 3000 on heading 090° and RAV VORTAC R-193 to BAARN INT/LRP 18 DME and hold.

ATIS 118.8	HARRISBURG APP CON (080°-179°) 126.45 281.525 (180°-329°) 124.1 273.525 (330°-079°) 118.25 269.45	HARRISBURG INTL TOWER 124.8 269.35	GND CON 121.7 348.6
----------------------	---	--	-------------------------------



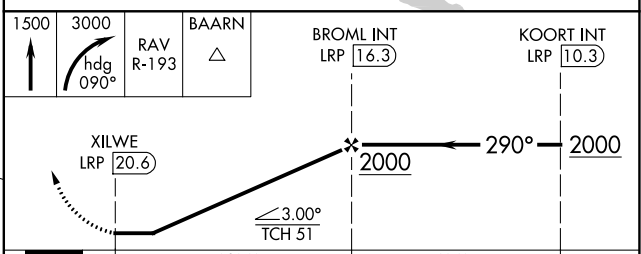
ELEV 310	D	TDZE 308
----------	----------	----------



TDZ/CL Rwy 13
REL Rwy 31
HIRL Rwy 13-31

FAF to MAP 4.3 NM

Knots	60	90	120	150	180
Min:Sec	4:18	2:52	2:09	1:43	1:26



CATEGORY	A	B	C	D
S-31	1260-1 1/4 952 (1000-1 1/4)	1260-1 1/2 952 (1000-1 1/2)	1260-3	952 (1000-3)
CIRCLING	1260-1 1/4 950 (1000-1 1/4)	1260-1 1/2 950 (1000-1 1/2)	1260-3 950 (1000-3)	1440-3 1130 (1200-3)

VOR RWY 31

NE-4, 26 DEC 2024 to 23 JAN 2025

NE-4, 26 DEC 2024 to 23 JAN 2025