

COASTAL NINE DEPARTURE

**TOP ALTITUDE:
3000**

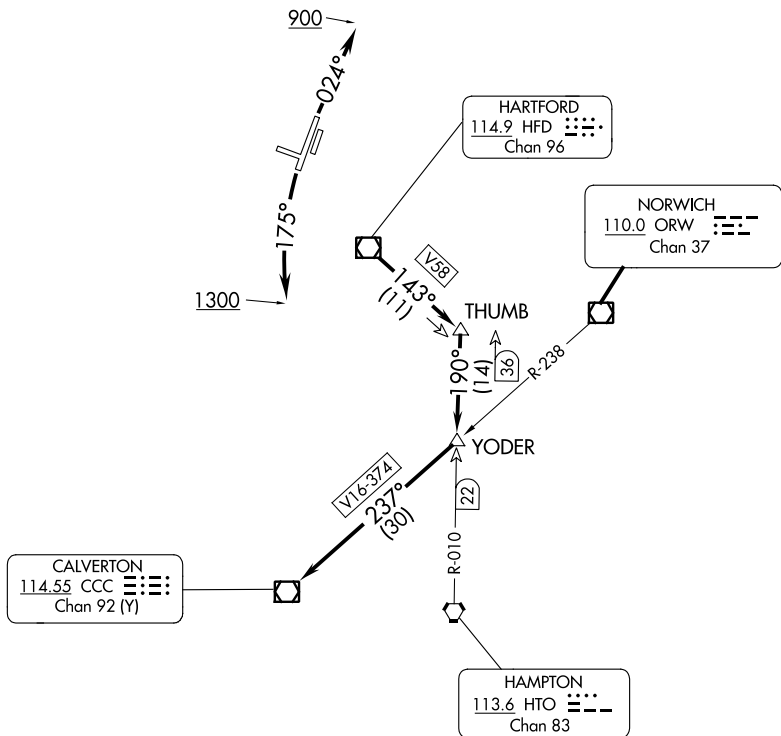
ATIS 126.45
GND CON
121.6
BRAINARD TOWER ★
119.6 (CTAF) 248.2
BRADLEY DEP CON
127.8 269.325

TAKEOFF MINIMUMS:

Rwys 11, 29: NA-Environmental.

Rwy 2: Standard.

Rwy 20: 200-1 $\frac{3}{8}$ or standard with minimum climb of 220' per NM to 300, or alternatively, with standard takeoff minimums and a normal 200' per NM climb gradient, takeoff must occur no later than 1500' prior to DER.



NOTE: RADAR required.

NOTE: Initial departure headings are predicated on avoiding noise sensitive areas, flight crew awareness and compliance is important in minimizing noise impacts on surrounding communities.

(NARRATIVE ON FOLLOWING PAGE)

NOTE: Chart not to scale.

COASTAL NINE DEPARTURE

NE-1, 26 DEC 2024 to 23 JAN 2025

NE-1, 26 DEC 2024 to 23 JAN 2025

COASTAL NINE DEPARTURE



DEPARTURE ROUTE DESCRIPTION

TAKEOFF RUNWAY 2: Climb on heading 024° to 900, then as assigned for RADAR vectors to HFD VOR/DME, thence....

TAKEOFF RUNWAY 20: Climbing left turn heading 175° to 1300, then as assigned for RADAR vectors to HFD VOR/DME, thence....

....from over HFD VOR/DME proceed on HFD VOR/DME R-143 to THUMB INT, then on HTO VOR/DME R-010 to YODER INT, then on CCC VOR/DME R-057 to CCC VOR/DME, then on assigned route. Maintain 3000 or assigned altitude. Expect clearance to requested flight level 10 minutes after departure.

NE-1, 26 DEC 2024 to 23 JAN 2025

NE-1, 26 DEC 2024 to 23 JAN 2025