

LOC	I-HLN	APP CRS	Rwy Idg TDZE	N/A
110.1		091°	Apt Elev	3877

LOC BC-C

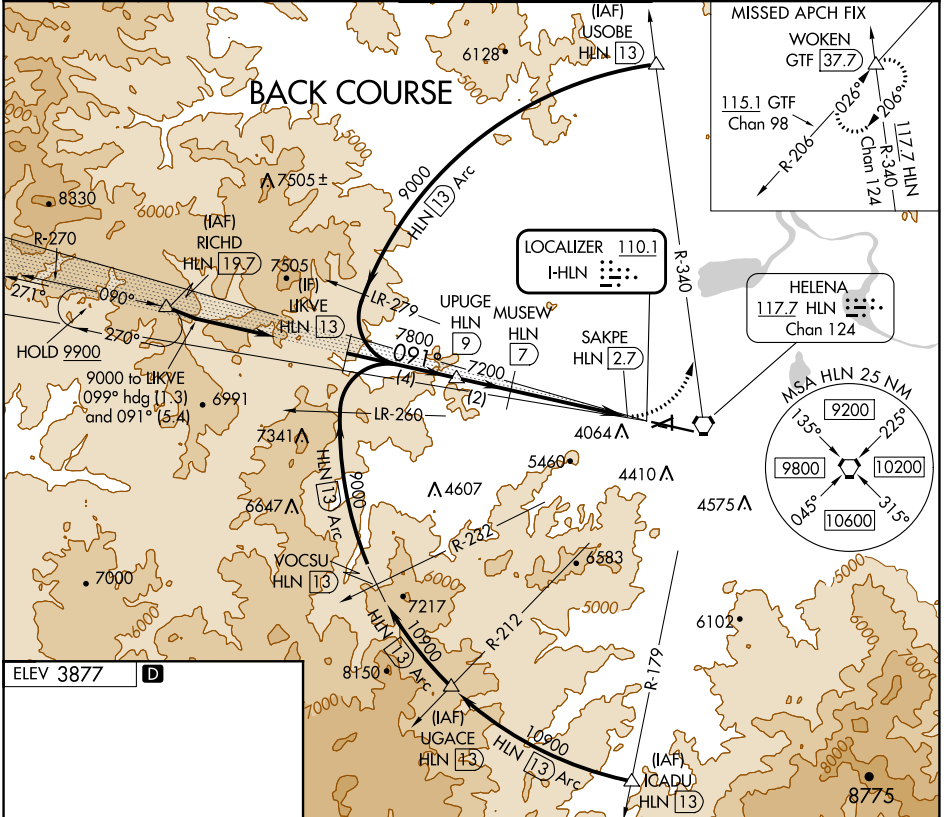
HELENA RGNL (HLN)

DME required.

⚠ Circling NA to Rwys 10 and 28. Circling Rwy 5, 23, 35 NA at night.
⚠ DME from HLN VORTAC. Simultaneous reception of I-HLN and HLN DME required. Rwy 5, 23, 35 helicopter visibility reduction below 1 SM NA.
⚠ -17°C

MISSED APPROACH: Climbing left turn to 9400 on HLN VORTAC R-340 to WOKEN INT/GTF 37.7 DME and hold, continue climb-in-hold to 9400.

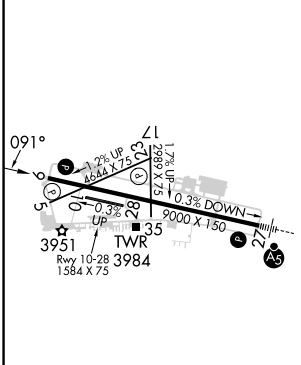
ATIS 120.4	HELENA APP CON * 119.5 229.4	HELENA TOWER * 118.3 (CTAF) 257.8	GND CON 121.9	UNICOM 122.95
----------------------	--	---	-------------------------	-------------------------



NW-1, 26 DEC 2024 to 23 JAN 2025

NW-1, 26 DEC 2024 to 23 JAN 2025

ELEV 3877 **D**



REIL Rws 9, 17, and 35 **Ⓛ**
 MIRL Rws 5-23 and 17-35 **Ⓛ**
 HIRL Rwy 9-27 **Ⓛ**

	LIKVE HLN 13	VGSI and descent angles not coincident (VGSI Angle 3.30/TCH 55).		9400 WOKEN HLN R-340
	9000	UPUGE HLN 9	MUSEW HLN 7	Disregard GS indications.
	091°	7800	7200	SAKPE HLN 2.7
		4 NM	2 NM	4.3 NM
CATEGORY	A	B	C	D
C CIRCLING	5140-1¼ 1263 (1300-1¼)	5140-1½ 1263 (1300-1½)	6000-3 2123 (2200-3)	NA