

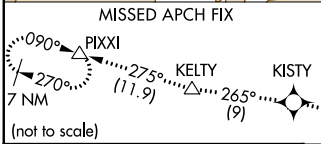
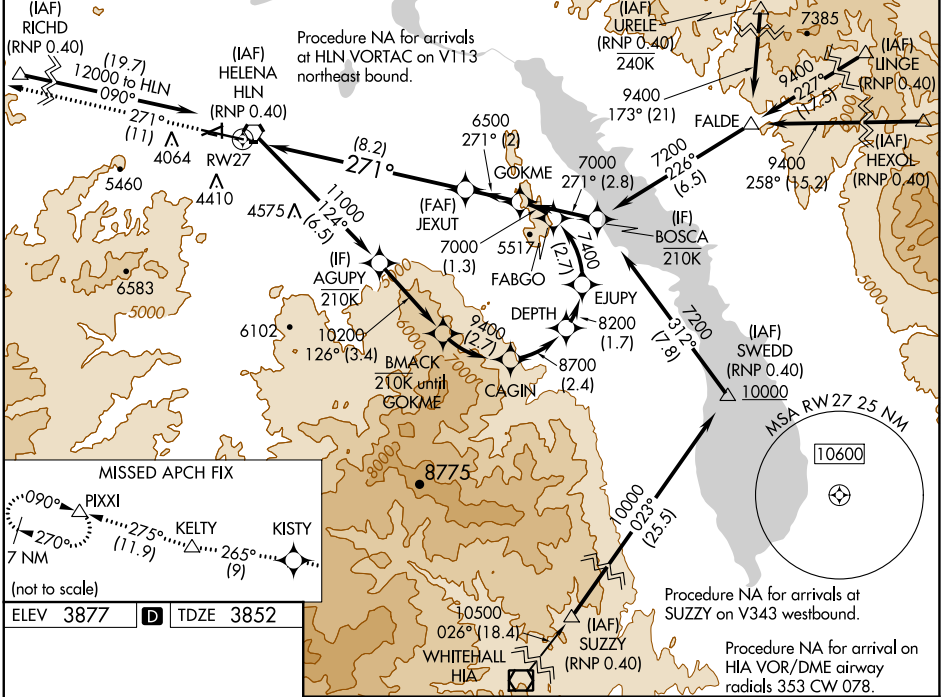
APP CRS 271°	Rwy Idg TDZE Apt Elev	9000 3852 3877
------------------------	-----------------------------	---

RNAV (RNP) Z RWY 27

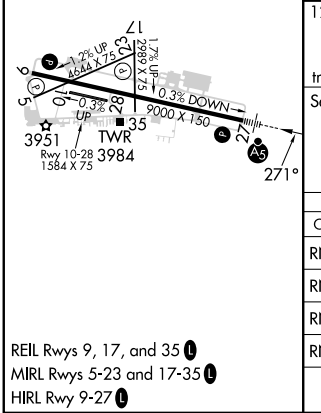
HELENA RGNL (HLN)

RNP AR APCH - GPS.	MALSR AS	MISSED APPROACH: Climb to 12000 on the RNAV missed approach route to PIXXI and hold, continue climb-in-hold to 12000. *Missed approach requires minimum climb of 280 feet per NM to 7800. #Missed approach requires minimum climb of 375 feet per NM to 6300.
Inop table does not apply to RNP 0.30 DA. For uncompensated Baro-VNAV systems, procedure NA below -28°C or above 54°C. For inop ALS, increase RNP 0.13 DA* visibility all Cats to 7/8 SM, RNP 0.30 DA* visibility all Cats to 1 3/8 SM.		

ATIS 120.4	HELENA APP CON * 119.5 229.4	HELENA TOWER * 118.3 (CTAF) 257.8	GND CON 121.9	UNICOM 122.95
----------------------	--	---	-------------------------	-------------------------



ELEV 3877	D	TDZE 3852
-----------	----------	-----------



12000	KISTY	tr 265°	KELTY	tr 275°	PIXXI	JEXUT	GOKME
tr 271°						6500	7000
See planview for multiple IF locations.							
	8.2 NM		2 NM				
CATEGORY	A	B	C	D			
RNP 0.13 DA*		4172-1/2	320 (300-1/2)				
RNP 0.20 DA#		4303-7/8	451 (500-7/8)				
RNP 0.30 DA#		4353-1	501 (500-1)				
RNP 0.30 DA		4866-4	1014 (1000-4)				
AUTHORIZATION REQUIRED							

HELENA, MONTANA
Amdt 2 25JAN24

46°36'N-111°59'W

HELENA RGNL (HLN)
RNAV (RNP) Z RWY 27

NW-1, 26 DEC 2024 to 23 JAN 2025

NW-1, 26 DEC 2024 to 23 JAN 2025