

VORTAC HLN 117.7 Chan 124	APP CRS 270°	Rwy Idg TDZE Apt Elev N/A N/A 3877
---	------------------------	--

VOR-A

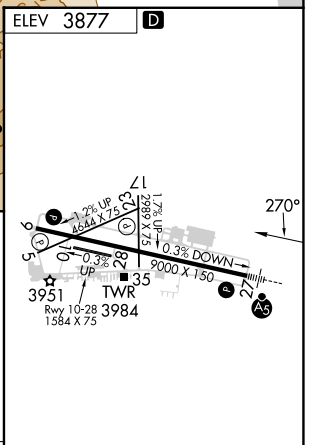
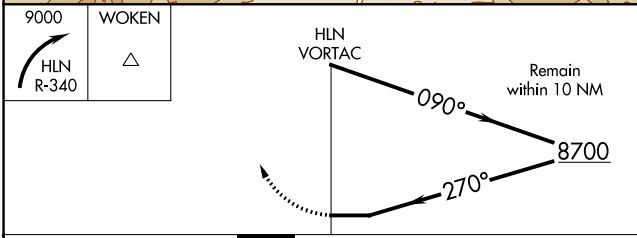
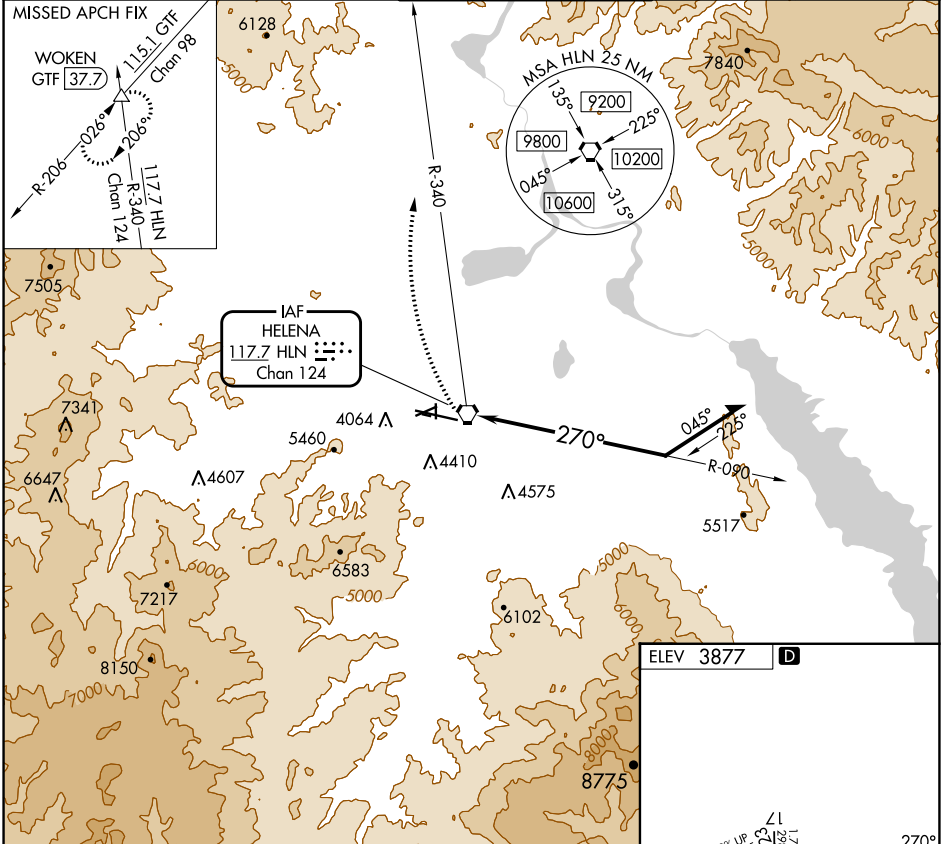
HELENA RGNL (HLN)

⚠ Circling NA to Rwys 10 and 28. Circling NA for Cat D south of Rwy 9-27. Circling Rwy 5, 23, 35 NA at night. Rwy 5, 23, 35 helicopter visibility reduction below 1 SM NA.

⚠ -17°C

MISSED APPROACH: Climbing right turn to 9000 on HLN VORTAC R-340 to WOKEN INT/GTF 37.7 DME and hold.

ATIS 120.4	HELENA APP CON * 119.5 229.4	HELENA TOWER * 118.3 (CTAF) 257.8	GND CON 121.9	UNICOM 122.95
----------------------	--	---	-------------------------	-------------------------



CATEGORY	A	B	C	D
CIRCLING	7200-1¼ 3323 (3400-1¼)	7200-1½ 3323 (3400-1½)	7200-3	3323 (3400-3)

REIL Rwys 9, 17, and 35
MIRL Rwys 5-23 and 17-35
HIRL Rwy 9-27

NW-1, 26 DEC 2024 to 23 JAN 2025

NW-1, 26 DEC 2024 to 23 JAN 2025