

WAAS CH <b>69619</b> <b>W17A</b>	APP CRS <b>172°</b>	Rwy Idg <b>6002</b> TDZE <b>929</b> Apt Elev <b>930</b>
--	------------------------	---

# RNAV (GPS) RWY 17L

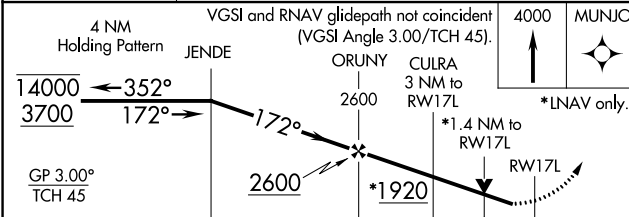
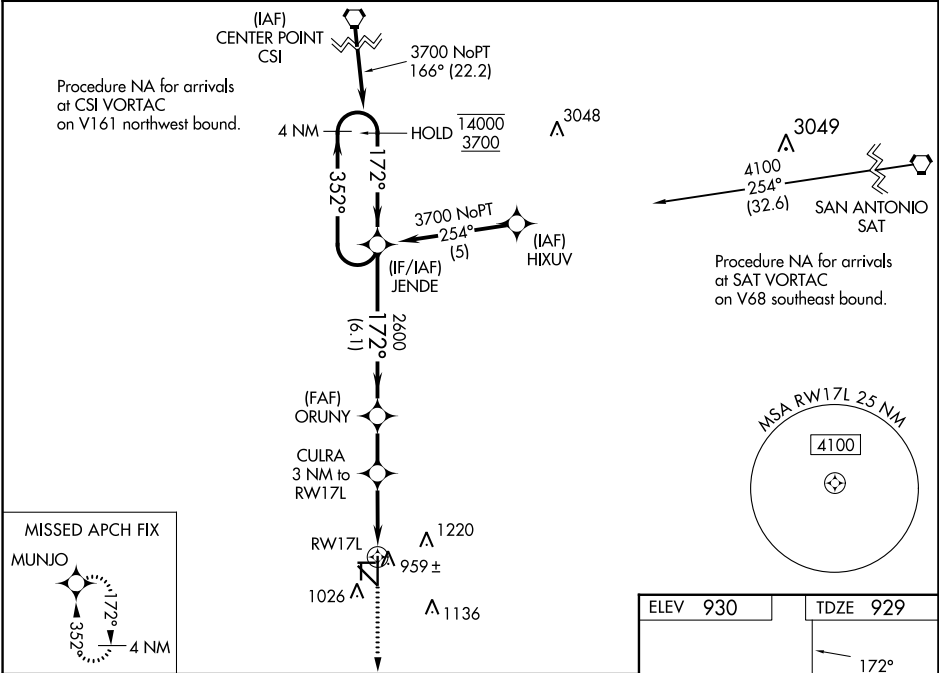
SOUTH TEXAS RGNL AT HONDO (HDO)

RNP APCH.

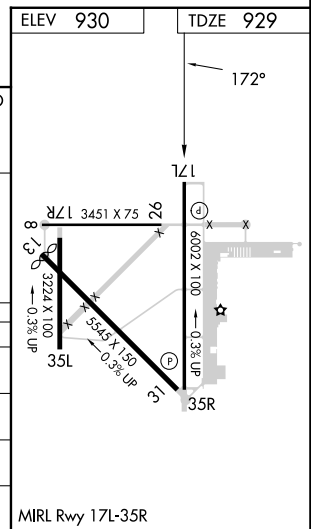
**⚠** Baro-VNAV and VDP NA when using Castroville altimeter setting. For uncompensated Baro-VNAV systems, LNAV/VNAV NA below -16°C or above 47°C. When local altimeter setting not received, use Castroville altimeter setting and increase all DA 62 feet and all MDA 80 feet, increase LNAV/VNAV all Cats visibility 1/8 SM, LNAV and Circling Cats C/D visibility 1/4 SM. Rwy 17L helicopter visibility reduction below 3/4 SM NA. Circling to Rwy's 8, 13, 17R, 26, 31 and 35L NA at night.

MISSED APPROACH: Climb to 4000 direct MUNJO and hold, continue climb-in-hold to 4000.

ASOS <b>119.675</b>	HOUSTON CENTER <b>134.95 269.4</b>	UNICOM <b>122.725 (CTAF)</b>
------------------------	---------------------------------------	---------------------------------



CATEGORY	A	B	C	D
LPV DA	1179-1 250 (300-1)			
LNAV/ VNAV DA	1314-1¼ 385 (400-1¼)			
LNAV MDA	1420-1 491 (500-1)	1420-1⅜ 491 (500-1⅜)	1420-1½ 491 (500-1½)	
CIRCLING	1440-1 510 (600-1)	1520-1 590 (600-1)	1580-1¼ 650 (700-1¼)	1580-2 650 (700-2)



SC-3, 26 DEC 2024 to 23 JAN 2025

SC-3, 26 DEC 2024 to 23 JAN 2025