

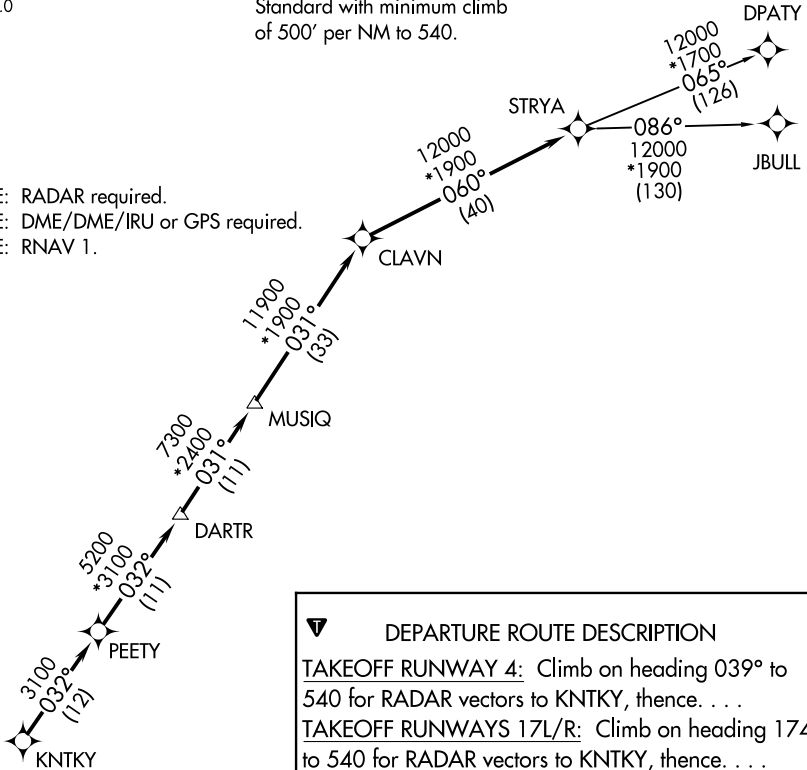
# STRYA EIGHT DEPARTURE (RNAV)

**TOP ALTITUDE: ASSIGNED BY ATC**

ATIS  
135.575 269.9  
GND CON  
121.6 275.8  
ELLINGTON TOWER  
126.05 253.5  
HOUSTON DEP CON  
134.45 284.0

**TAKEOFF MINIMUMS**  
Rwys 4, 17L/R, 22, 35L/R:  
Standard with minimum climb  
of 500' per NM to 540.

NOTE: RADAR required.  
NOTE: DME/DME/IRU or GPS required.  
NOTE: RNAV 1.



**DEPARTURE ROUTE DESCRIPTION**

**TAKEOFF RUNWAY 4:** Climb on heading 039° to 540 for RADAR vectors to KNTKY, thence. . .

**TAKEOFF RUNWAYS 17L/R:** Climb on heading 174° to 540 for RADAR vectors to KNTKY, thence. . .

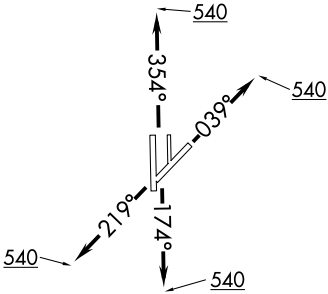
**TAKEOFF RUNWAY 22:** Climb on heading 219° to 540 for RADAR vectors to KNTKY, thence. . .

**TAKEOFF RUNWAYS 35L/R:** Climb on heading 354° to 540 for RADAR vectors to KNTKY, thence. . .

. . . on track 032° to PEETY, then on track 032° to DARTR, then on track 031° to MUSIQ, then on track 031° to CLAVN, then on track 060° to STRYA, then on (transition). Maintain ATC assigned altitude. Expect filed altitude 10 minutes after departure.

**DPATY TRANSITION (STRYA8.DPATY)**

**JBULL TRANSITION (STRYA8.JBULL)**



NOTE: Chart not to scale.

SC-5, 26 DEC 2024 to 23 JAN 2025

SC-5, 26 DEC 2024 to 23 JAN 2025

# STRYA EIGHT DEPARTURE (RNAV)

(STRYA8.STRYA) 07OCT21