

LOC/DME I-HUB <b>109.9</b> Chan <b>36</b>	APP CRS <b>041°</b>	Rwy Idg <b>7602</b> TDZE <b>44</b> Apt Elev <b>46</b>
---	------------------------	---

# ILS RWY 4 (CAT II & III)

WILLIAM P HOBBY (HOU)

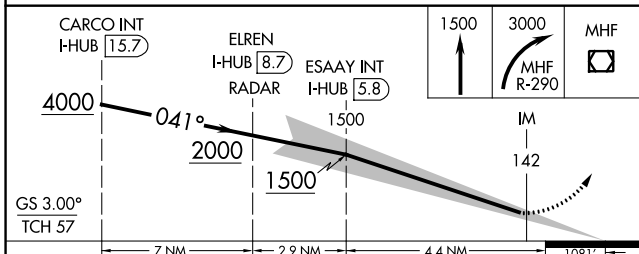
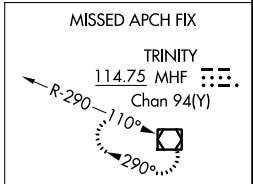
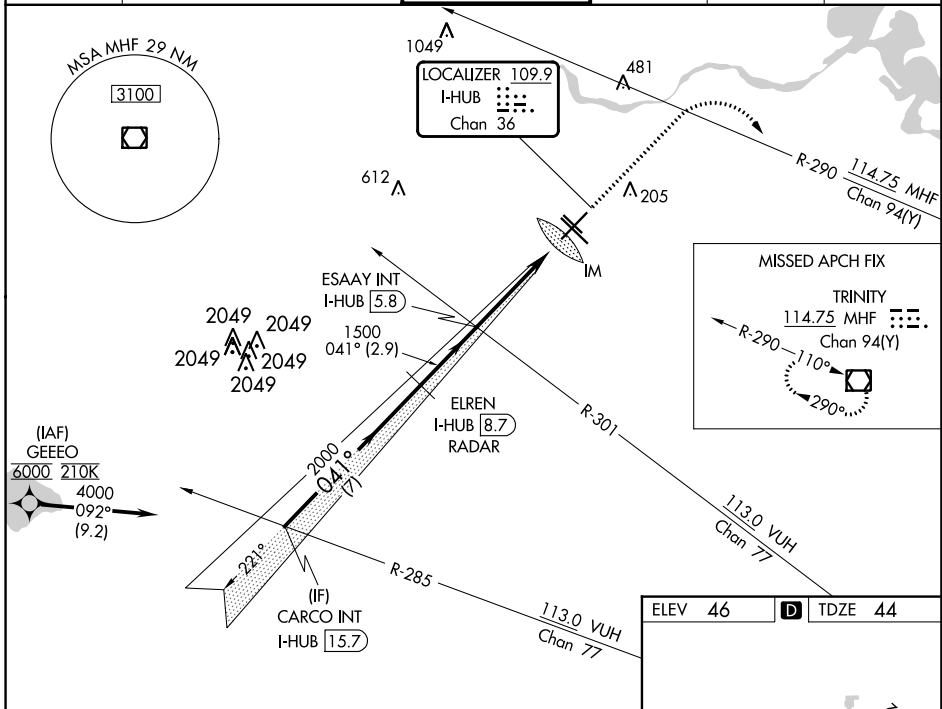
Aircraft not GPS equipped - RADAR required for procedure entry.  
From GEEEO: RNAV 1- GPS required.

**ALSF-2**

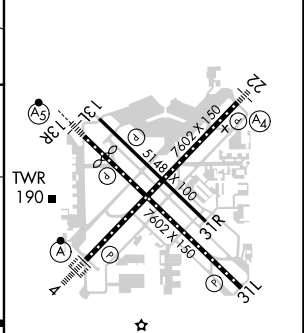
**MISSED APPROACH:** Climb to 1500 then climbing right turn to 3000 on MHF VOR/DME R-290 to MHF VOR/DME and hold.

**CAUTION:** CAT II: RVR 1000 authorized with specific OPSPEC, MSPEC, or LOA approval and use of autoland or HUD to touchdown.

D-ATIS <b>124.6</b>	HOUSTON APP CON <b>120.05 379.1 EAST</b> <b>124.35 316.15 WEST</b>	<b>HOBBY TOWER</b> <b>118.7 256.9</b>	GND CON <b>121.9</b>	CLNC DEL <b>125.45</b>	CPDLC
------------------------	--	--	-------------------------	---------------------------	-------



ELEV <b>46</b>	<b>D</b> TDZE <b>44</b>
----------------	-------------------------



CATEGORY	A	B	C	D
S-ILS 4	CAT II RA 100/12		100 DA 144	
S-ILS 4	CAT III		RVR 06	

**CATEGORY II & III ILS - SPECIAL AIRCREW & AIRCRAFT CERTIFICATION REQUIRED**

REIL Rwy 31L  
MIRL Rwy 13L-31R  
HIRL Rwy 4-22 and 13R-31L  
TDZ/CL Rwy 4, 13R and 31L

SC-5, 26 DEC 2024 to 23 JAN 2025

SC-5, 26 DEC 2024 to 23 JAN 2025