

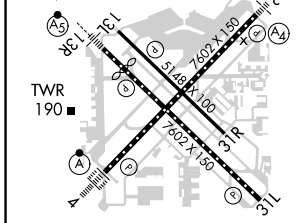
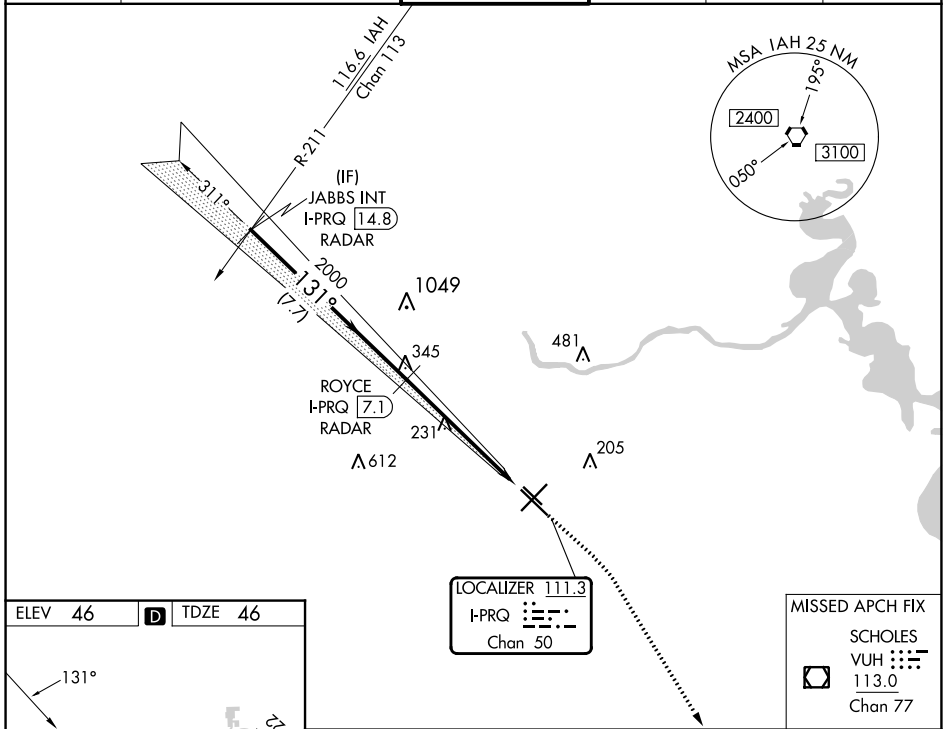
LOC/DME I-PRQ 111.3 Chan 50	APP CRS 131°	Rwy Idg 6568 TDZE 46 Apt Elev 46
---	------------------------	---

ILS or LOC RWY 13R

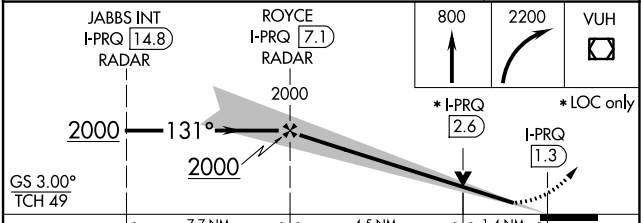
WILLIAM P HOBBY (HOU)

RADAR or DME required for LOC only. RADAR required for procedure entry.		MALSR 	MISSED APPROACH: Climb to 800 then climbing right turn to 2200 direct VUH VOR/DME.
<p>▼ Inop table does not apply to S-ILS Rwy 13R. Rwy 13R helicopter visibility reduction below 3/4 SM NA. For inop ALS, increase S-LOC 13R Cats A/B visibility to RVR 5500, Cats C/D/E to 1 3/4 SM.</p> <p>▲</p>			

D-ATIS 124.6	HOUSTON APP CON 120.05 379.1 EAST 124.35 316.15 WEST	HOBBY TOWER 118.7 256.9	GND CON 121.9	CLNC DEL 125.45	CPDLC
------------------------	--	-----------------------------------	-------------------------	---------------------------	-------



ELEV 46	D	TDZE 46			
<p>REIL Rwy 31L MIRL Rwys 13L-31R HIRL Rwys 4-22 and 13R-31L TDZ/CL Rwys 4, 13R and 31L FAF to MAP 5.9 NM</p>					
Knots	60	90	120	150	180
Min:Sec	5:54	3:56	2:57	2:22	1:58



CATEGORY	A	B	C	D	E
S-ILS 13R	296/40 250 (300-3/4)				
S-LOC 13R	540/40	494 (500-3/4)	540/50	494 (500-1)	540/60 494 (500-1 1/4)
C CIRCLING	540-1	494 (500-1)	740-2 1/4	694 (700-2 1/4)	860-3 814 (900-3)

SC-5, 26 DEC 2024 to 23 JAN 2025

SC-5, 26 DEC 2024 to 23 JAN 2025