

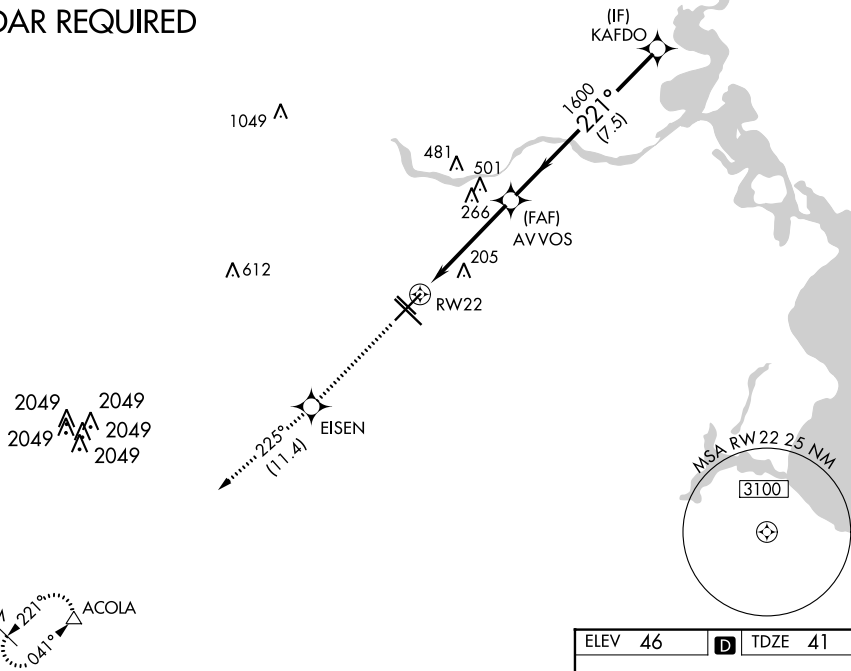
|  |                        |   |
|--|------------------------|---|
| WAAS<br>CH <b>65610</b><br><b>W22A</b> | APP CRS<br><b>221°</b> | Rwy Idg <b>7602</b><br>TDZE <b>41</b><br>Apt Elev <b>46</b> |
|--|------------------------|---|

# RNAV (GPS) RWY 22

WILLIAM P HOBBY (HOU)

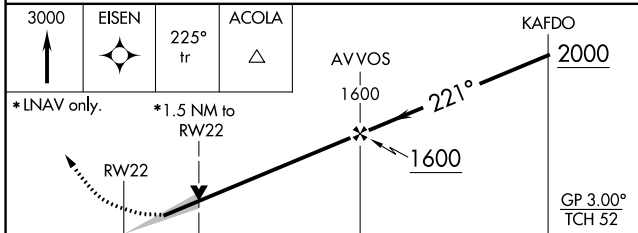
|   |  |                                   |  |                           |       |
|---|--|-----------------------------------|--|---------------------------|-------|
| RNP APCH<br>▽ Inop table does not apply to LPV, LNAV/VNAV all Cats, and LNAV Cat C. For uncompensated Baro-VNAV systems, LNAV/VNAV NA below -15°C (5°F) or above 48°C (118°F).<br>⚠ |  | MALS<br>(A)                       | MISSED APPROACH: Climb to 3000 direct EISEN and on track 225° to ACOLA and hold. |                           |       |
| D-ATIS<br><b>124.6</b>  | HOUSTON APP CON<br><b>120.05 379.1 EAST</b><br><b>124.35 316.15 WEST</b> | HOBBY TOWER<br><b>118.7 256.9</b> | GND CON<br><b>121.9</b>  | CLNC DEL<br><b>125.45</b> | CPDLC |

## RADAR REQUIRED



SC-5, 26 DEC 2024 to 23 JAN 2025

SC-5, 26 DEC 2024 to 23 JAN 2025



| CATEGORY     | A      | B           | C                      | D                      | E                      |
|--------------|--------|-------------|------------------------|------------------------|------------------------|
| LPV DA       | 360-1  |             | 319 (400-1)            |                        |                        |
| LNAV/VNAV DA | 480-1½ |             | 439 (500-1½)           |                        |                        |
| LNAV MDA     | 580-¾  | 539 (600-¾) | 580-1½<br>539 (600-1½) | 580-1¾<br>539 (600-1¾) | 580-2<br>539 (600-2)   |
| CIRCLING     | 580-1  | 534 (600-1) | 580-1½<br>534 (600-1½) | 740-2¼<br>694 (700-2¼) | 820-2¾<br>774 (800-2¾) |

|         |  |         |
|---------|--|---------|
| ELEV 46 |  | TDZE 41 |
|---------|--|---------|

REIL Rwy 31L  
MIRL Rwy 13L-31R  
HIRL Rwys 4-22 and 13R-31L  
TDZ/CL Rwys 4, 13R and 31L