

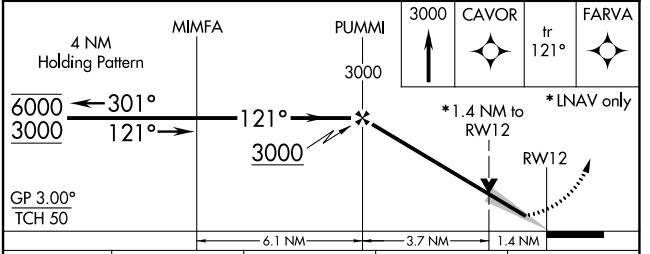
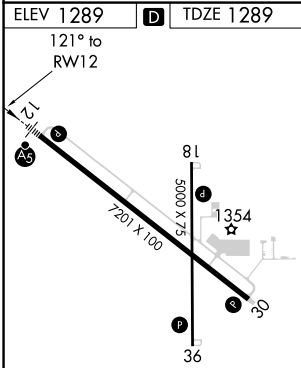
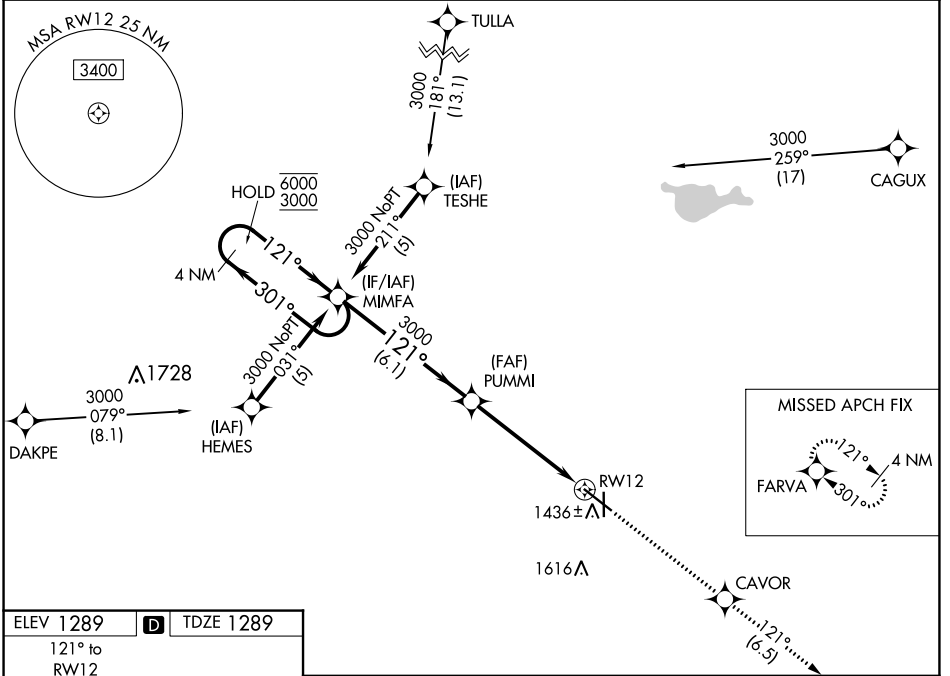
WAAS CH 70314 W12A	APP CRS 121°	Rwy ldg TDZE Apt Elev	7201 1289 1289
--	------------------------	-----------------------------	---

RNAV (GPS) RWY 12

HURON RGNL (HON)

RNP APCH.	MALSR	MISSED APPROACH: Climb to 3000 direct CAVOR and on track 121° to FARVA and hold.
<p>⚠ Circling Rwy 18, 36 NA at night. For uncompensated Baro-VNAV systems, LNAV/VNAV NA below -17°C or above 54°C. For inop ALS, increase LNAV/VNAV all CATs visibility to 1½ SM and LNAV Cat C/D to 1¾ SM.</p>		

ASOS 118.125	MINNEAPOLIS CENTER 126.25 339.8	UNICOM 123.0 (CTAF) 0
------------------------	---	---------------------------------



CATEGORY	A	B	C	D
LPV DA	1489-½ 200 (200-½)			
LNAV/VNAV DA	1699-¾ 410 (500-¾)			
LNAV MDA	1780-½ 491 (500-½)		1780-1 491 (500-1)	
C CIRCLING	1820-1 531 (600-1)		1920-1¾ 631 (700-1¾) 1980-2¼ 691 (700-2¼)	

HIRL Rwy 12-30
MIRL Rwy 18-36
REIL Rwy 18, 30 and 36

NC-1, 26 DEC 2024 to 23 JAN 2025

NC-1, 26 DEC 2024 to 23 JAN 2025