

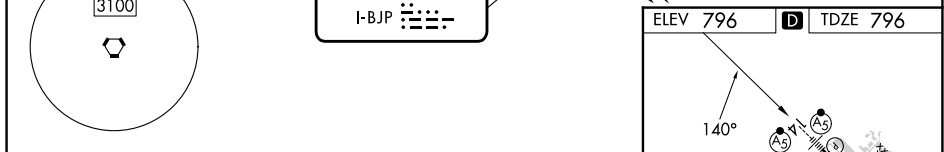
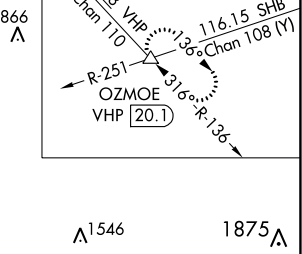
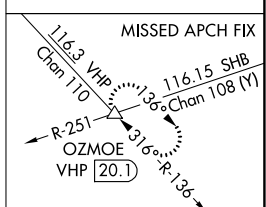
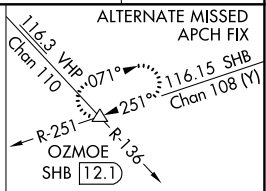
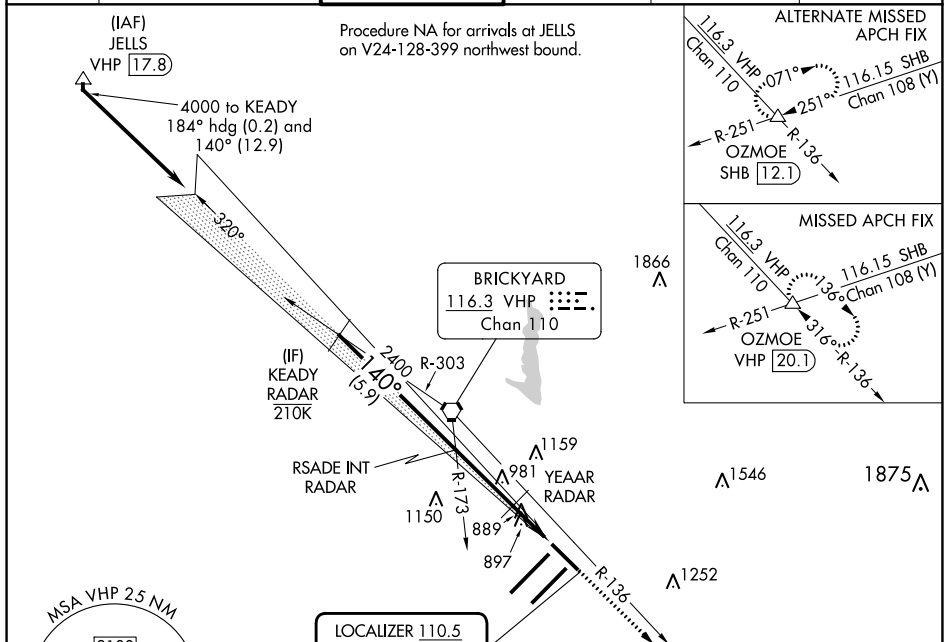
# ILS or LOC RWY 14

INDIANAPOLIS INTL (IND)

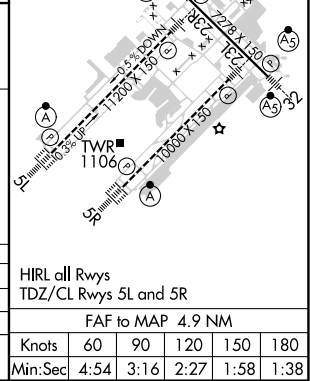
LOC I-BJP <b>110.5</b>	APP CRS <b>140°</b>	Rwy Idg <b>7278</b> TDZE <b>796</b> Apt Elev <b>796</b>
---------------------------	------------------------	---

RADAR required.		MALSR	MISSED APPROACH: Climb to 3000 on VHP R-136 to OZMOE INT/VHP 20.1 DME and hold.
<p><b>V</b> For inop ALS, increase S-LOC 14 Cat C and D visibility to RVR 5500.  <b>A</b> *RVR 1800 authorized with use of FD or AP or HUD to DA.</p>			

D-ATIS <b>134.25</b>	INDIANAPOLIS APP CON <b>128.175 317.8</b>	INDY TOWER <b>120.9 251.1</b>	GND CON <b>121.9</b>	CLNC DEL <b>128.75 251.1</b>	CPDLC
-------------------------	--	----------------------------------	-------------------------	---------------------------------	-------



CATEGORY	A	B	C	D
S-ILS 14 *	996/24 200 (200-1/2)			
S-LOC 14	1140/24 344 (400-1/2)	1140/30 344 (400-3/4)		
<b>C</b> CIRCLING	1420-1 624 (700-1)		1420-1 3/4 624 (700-1 3/4)	1560-2 1/2 764 (800-2 1/2)



EC-2, 26 DEC 2024 to 23 JAN 2025

EC-2, 26 DEC 2024 to 23 JAN 2025