

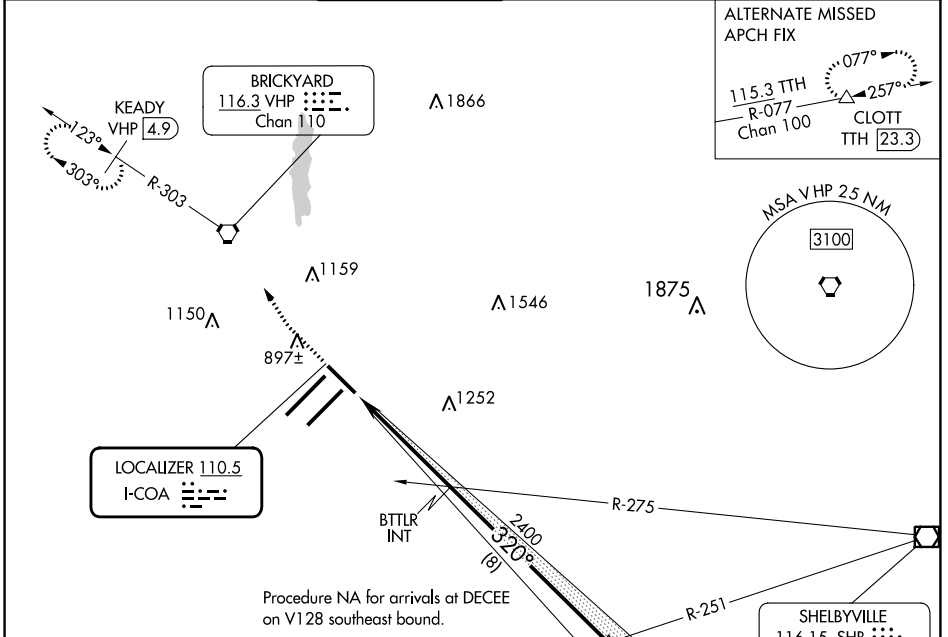
LOC I-COA <b>110.5</b>	APP CRS <b>320°</b>	Rwy Idg <b>7278</b> TDZE <b>793</b> Apt Elev <b>796</b>
---------------------------	------------------------	--

# ILS or LOC RWY 32

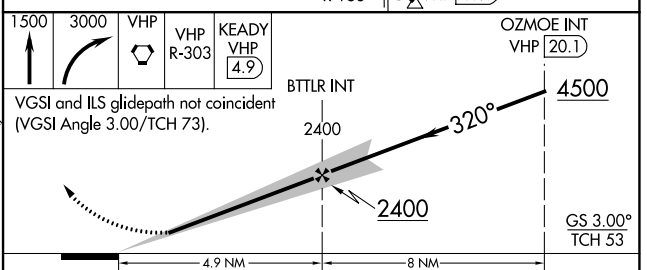
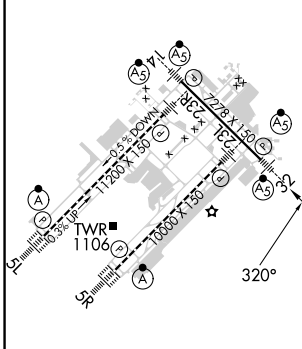
INDIANAPOLIS INTL (IND)

<b>▼</b> DME required.	<b>⚠</b> #RVR 1800 authorized with the use of FD or AP or HUD to DA.	MALSR	MISSED APPROACH: Climb to 1500 then climbing right turn to 3000 direct VHP VORTAC and on VHP R-303 to KEADY/VHP 4.9 DME and hold.
------------------------	--	-------	---

D-ATIS <b>134.25</b>	INDIANAPOLIS APP CON <b>128.175 317.8</b>	INDY TOWER <b>120.9 251.1</b>	GND CON <b>121.9</b>	CLNC DEL <b>128.75 251.1</b>	CPDLC
-------------------------	--	----------------------------------	-------------------------	---------------------------------	-------



ELEV 796	<b>D</b> TDZE 793
----------	-------------------



CATEGORY	A	B	C	D
S-ILS 32	# 993/24 200 (200-½)			
S-LOC 32	1280/24	487 (500-½)	1280/50	487 (500-1)
<b>C</b> CIRCLING	1420-1	624 (700-1)	1420-1¾ 624 (700-1¾)	1560-2½ 764 (800-2½)

EC-2, 26 DEC 2024 to 23 JAN 2025

EC-2, 26 DEC 2024 to 23 JAN 2025