

MEARZ SEVEN DEPARTURE

INDIANAPOLIS, INDIANA

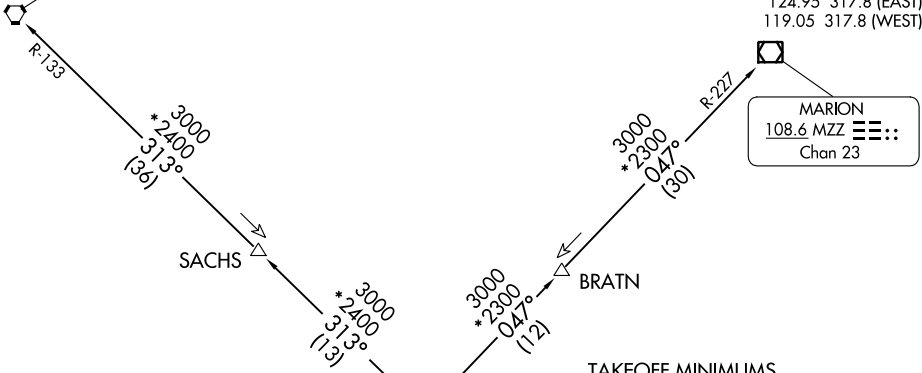
TOP ALTITUDE:
(JETS) 5000
(PROPS) 3000

RADAR required.

D-ATIS 134.25
CLNC DEL
128.75 251.1
CPDLC
GND CON
121.9
INDY TOWER
120.9 251.1
INDIANAPOLIS DEP CON
124.95 317.8 (EAST)
119.05 317.8 (WEST)

BOILER
115.1 BVT
Chan 98

MARION
108.6 MZZ
Chan 23



TAKEOFF MINIMUMS

Rwy 5L/R, 14, 23L/R, 32: Standard.

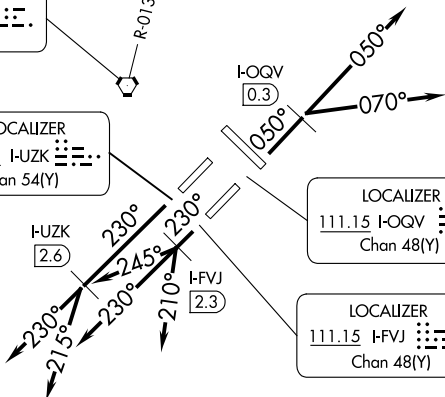
- NOTE: Turbojets accelerate to 250K until reaching 10000, if unable advise ATC.
- NOTE: Assigned to aircraft with a requested altitude of 11000 or above.
- NOTE: Select appropriate localizer/DME frequency/channel prior to departure.

BRICKYARD
116.3 VHP
Chan 110

LOCALIZER
111.75 I-UZK
Chan 54(Y)

LOCALIZER
111.15 I-OQV
Chan 48(Y)

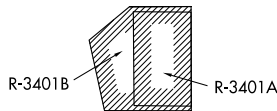
LOCALIZER
111.15 I-FVJ
Chan 48(Y)



EC-2, 26 DEC 2024 to 23 JAN 2025

EC-2, 26 DEC 2024 to 23 JAN 2025

(NARRATIVE ON FOLLOWING PAGE)



NOTE: Chart not to scale.

MEARZ SEVEN DEPARTURE

(MEARZ7.MEARZ) 19MAY22

INDIANAPOLIS, INDIANA
INDIANAPOLIS INTL (IND)



DEPARTURE ROUTE DESCRIPTION

TAKEOFF RUNWAY 5R (TURBOJETS ONLY-DME REQUIRED): Climb on heading 050° to I-OQV 0.3 DME, then on assigned heading 050° or 070°. Maintain 5000.

Thence....

TAKEOFF RUNWAY 23R (TURBOJETS ONLY-DME REQUIRED): Climb on heading 230° to I-UZK 2.6 DME, then on assigned heading 230° or 215°. Maintain 5000.

Thence....

TAKEOFF RUNWAY 23L (TURBOJETS ONLY-DME REQUIRED): Climb on heading 230° to I-FVJ 2.3 DME, then on assigned heading 210°, 230°, or 245°. Maintain 5000.

Thence....

TAKEOFF ALL OTHER RUNWAYS (TURBOJETS ONLY): Climb on assigned heading. Maintain 5000. Thence....

TAKEOFF ALL RUNWAYS (PROPELLER ONLY): Climb on assigned heading. Maintain 3000. Thence....

DEPARTING ALL OTHER AUTHORIZED RUNWAYS: Climb on assigned heading to assigned altitude. Thence....

....expect RADAR vectors to join VHP R-013 to MEARZ then on transition or assigned route. Expect clearance to requested altitude ten minutes after departure.

BOILER TRANSITION (MEARZ7.BVT): From over MEARZ on BVT R-133 to BVT VORTAC.

MARION TRANSITION (MEARZ7.MZZ): From over MEARZ on MZZ R-227 to MZZ VOR/DME.

EC-2, 26 DEC 2024 to 23 JAN 2025

EC-2, 26 DEC 2024 to 23 JAN 2025