

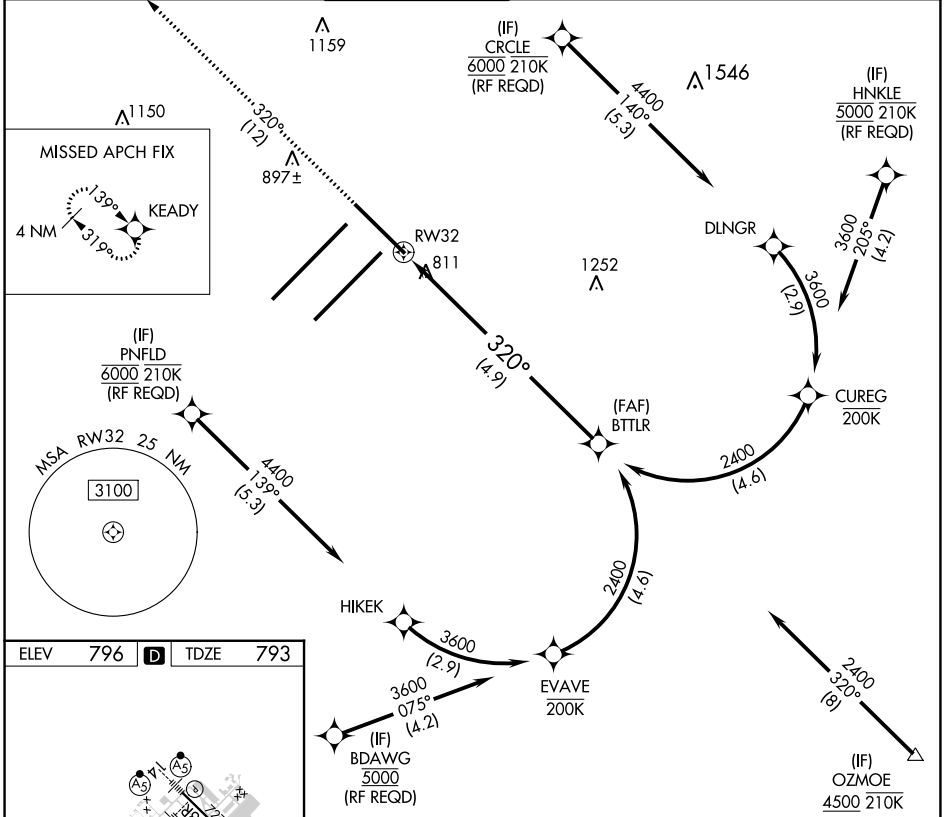
APP CRS <b>320°</b>	Rwy Idg <b>7278</b>
	TDZE <b>793</b>
	Apt Elev <b>796</b>

# RNAV (RNP) Z RWY 32

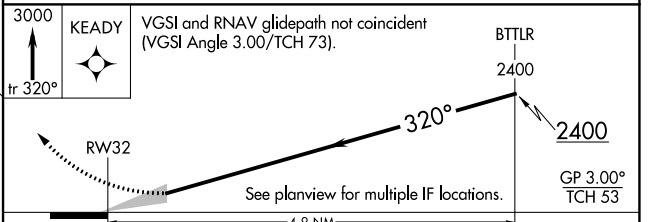
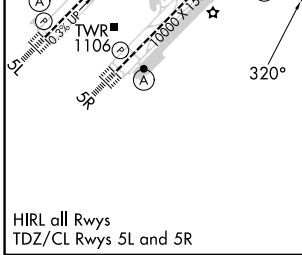
INDIANAPOLIS INTL (IND)

	For uncompensated Baro-VNAV systems, procedure NA below -18°C (2°F) or above 54°C (130°F). GPS required.	MALSR 	MISSED APPROACH: Climb to 3000 on track 320° to KEADY and hold.

D-ATIS <b>134.25</b>	INDIANAPOLIS APP CON <b>128.175 317.8</b>	INDY TOWER <b>120.9 251.1</b>	GND CON <b>121.9</b>	CLNC DEL <b>128.75 251.1</b>	CPDLC
-------------------------	--	----------------------------------	-------------------------	---------------------------------	-------



ELEV 796	<b>D</b>	TDZE 793
----------	----------	----------



CATEGORY	A	B	C	D
RNP 0.19 DA		1134/30	341 (400- $\frac{5}{8}$ )	
RNP 0.30 DA		1196/45	403 (400- $\frac{5}{8}$ )	

**AUTHORIZATION REQUIRED**

EC-2, 26 DEC 2024 to 23 JAN 2025

EC-2, 26 DEC 2024 to 23 JAN 2025