

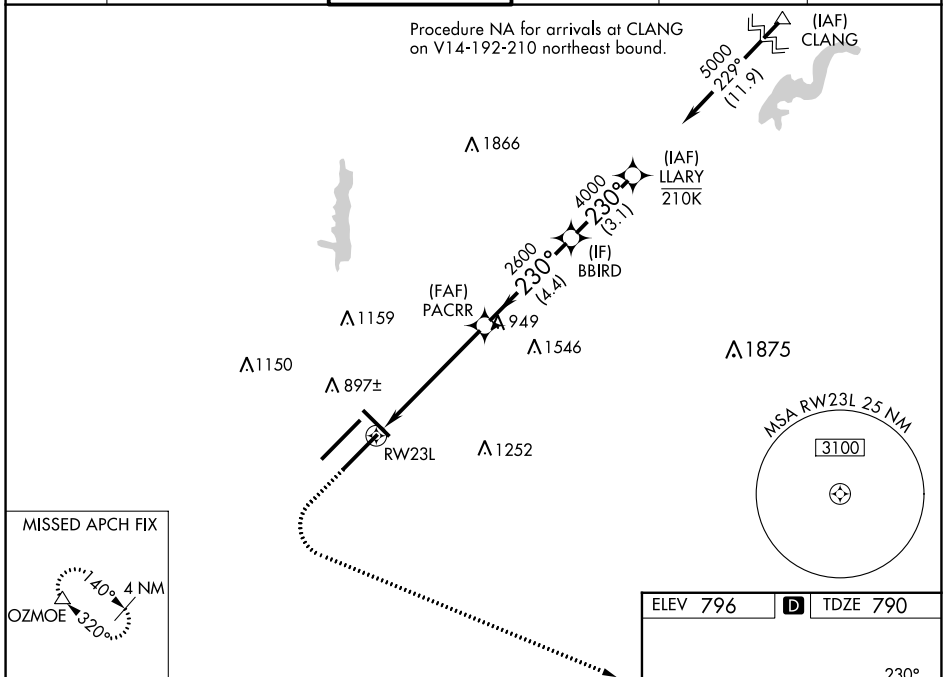
WAAS CH <b>86406</b> <b>W23A</b>	APP CRS <b>230°</b>	Rwy Idg <b>10000</b> TDZE <b>790</b> Apt Elev <b>796</b>
--	------------------------	--

# RNAV (GPS) Y RWY 23L

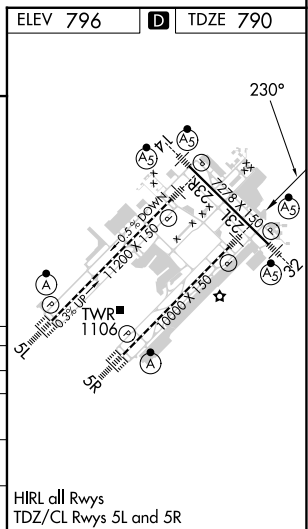
INDIANAPOLIS INTL (IND)

RNP APCH - GPS.	MALSR MISSED APPROACH: Climb to 1500 then climbing left turn to 3000 direct OZMOE and hold.
<p>⚠ LNAV procedure NA during simultaneous operations. Simultaneous approach authorized.</p> <p>⚠ Use of FD or AP required during simultaneous operations. For uncompensated Baro-VNAV systems, LNAV/VNAV NA below -20°C or above 54°C. For inop ALS, increase LNAV/VNAV all Cats visibility to RVR 4500. * RVR 1800 authorized with use of FD or AP or HUD to DA.</p>	

D-ATIS <b>134.25</b>	INDIANAPOLIS APP CON <b>128.175 317.8</b>	INDY TOWER <b>120.9 251.1</b>	GND CON <b>121.9</b>	CLNC DEL <b>128.75 251.1</b>	CPDLC
-------------------------	--	----------------------------------	-------------------------	---------------------------------	-------



MISSED APCH FIX	<p>Procedure NA for arrivals at CLANG on V14-192-210 northeast bound.</p>			
	<p>Procedure NA for arrivals at CLANG on V14-192-210 northeast bound.</p>			
<p>1500</p> <p>3000</p> <p>OZMOE</p> <p>△</p>	<p>VGSI and RNAV glidepath not coincident (VGSI Angle 3.00/TCH 71).</p>			
	<p>PACRR 2600 BBIRD 4000 LLARY 5000</p> <p>GP 3.00° TCH 55</p>			
CATEGORY	A	B	C	D
LPV DA*	990/24		200 (200-½)	
LNAV/VNAV DA	1078/24		288 (300-½)	
LNAV MDA	1180/24 390 (400-½)		1180/35 390 (400-¾)	
CIRCLING	1420-1 624 (700-1)		1420-1¾ 624 (700-1¾) 1560-2½ 764 (800-2½)	



EC-2, 26 DEC 2024 to 23 JAN 2025

EC-2, 26 DEC 2024 to 23 JAN 2025

HRL all Rwys  
TDZ/CL Rws 5L and 5R