

LOC I-JHF 111.7	APP CRS 159°	Rwy Idg 5387
		TDZE 341
		Apt Elev 341

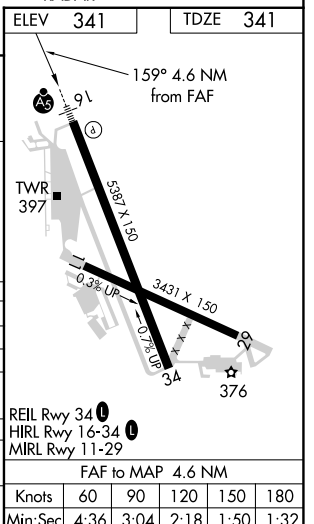
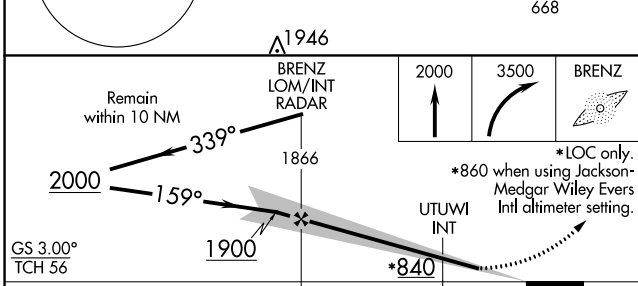
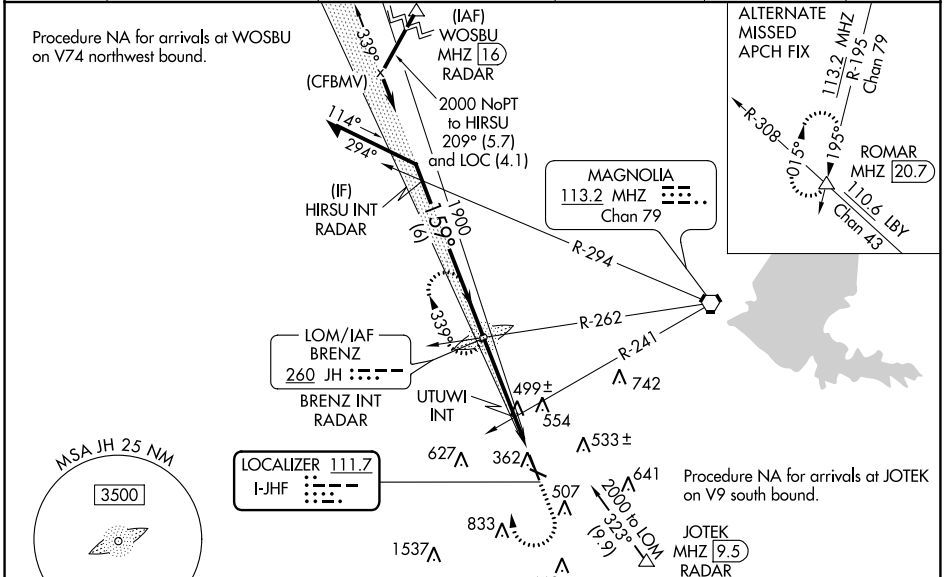
ILS or LOC RWY 16

HAWKINS FLD (HKS)

⚠ When local altimeter setting not received, use Jackson-Medgar Wiley Evers Intl altimeter setting, increase all DA 19 feet and all MDA 20 feet, increase Circling Cat C visibility 1/4 mile and UTUWI fix Circling Cat C visibility 1/4 mile. For inop MALSRS, increase S-LOC 16 Cats C/D visibility 3/8, increase UTUWI fix S-LOC 16 Cats C/D visibility 3/8. For inop MALSRS when using Jackson-Medgar Wiley Evers Intl altimeter setting increase S-LOC Cats C/D visibility 3/8. Glideslope unusable when control tower closed, only localizer minimums authorized during this period. ADF required.

MALSRS
 MISSED APPROACH: Climb to 2000 then climbing right turn to 3500 direct BRENZ LOM and hold.

ASOS 120.625	JACKSON APP CON * 123.9 319.2	HAWKINS TOWER * 119.65 (CTAF) 257.8	GND CON 121.9 239.0	CLNC DEL 121.9 (When twr closed)	UNICOM 122.95
------------------------	-----------------------------------------	-----------------------------------------------	-------------------------------	-----------------------------------------------	-------------------------



CATEGORY	A	B	C	D
S-ILS 16	541-1/2 200 (200-1/2)			
S-LOC 16	840-1/2 499 (500-1/2)	840-1 499 (500-1)		
C CIRCLING	860-1 519 (600-1)	880-1 539 (600-1)	1140-2 799 (800-2 1/4)	1320-3 979 (1000-3)
UTUWI FIX MINIMUMS (DUAL VOR RECEIVERS REQUIRED)				
S-LOC 16	760-1/2 419 (500-1/2)	760-3/4 419 (500-3/4)		
C CIRCLING	860-1 519 (600-1)	880-1 539 (600-1)	1140-2 799 (800-2 1/4)	1320-3 979 (1000-3)

SC-4, 26 DEC 2024 to 23 JAN 2025

SC-4, 26 DEC 2024 to 23 JAN 2025