

HI-TACAN Z RWY 10

TACAN Chan 19	NIP 087°	APCH CRS 087°	Rwy ldg TDZE Arpt Elev 8006 21 23
-------------------------	--------------------	-------------------------	---

[USN]

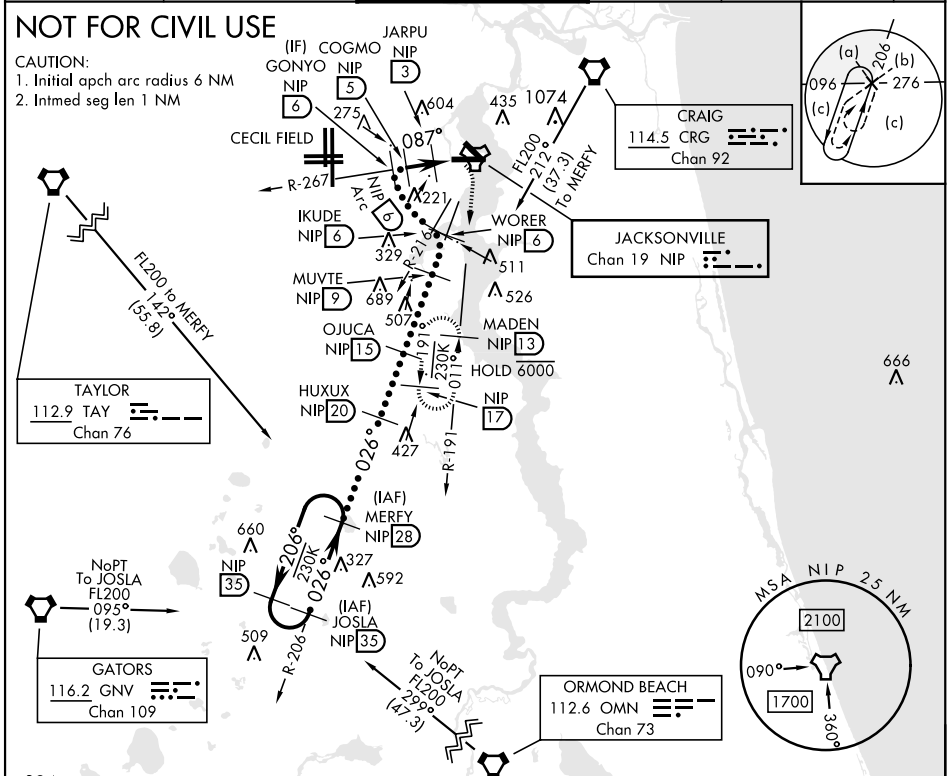
JACKSONVILLE NAS (TOWERS FLD) (KNIP)

ALSF-1

* When ALS inop, increase CAT CDE vis to 1½ miles.

MISSED APPROACH: Climb to 2000 direct NIP TACAN, outbound R-191 to MADEN and hold.

ATIS 124.35 290.425	APP CON 127.775 377.075	NAVY JACKSONVILLE TOWER 125.15 (CTAF) 340.2	GND CON 128.6 336.4	CLNC DEL 134.775 0353.675	ASR/ PAR
-------------------------------	-----------------------------------	---	-------------------------------	-------------------------------------	-------------



SE-3, 26 DEC 2024 to 23 JAN 2025

SE-3, 26 DEC 2024 to 23 JAN 2025

384	EMERG SAFE ALT 100 NM 2800		ELEV 23	TDZE 21
MERFY R-206 (28)	HUXUX (20)	OJUCA (15)	WORER R-206 (6)	IKUDE R-216 (6)
GONYO R-267 (6)	JARPU (5)	JARPU (5)	NIP (1.9)	TACAN
MUVTE (9)	COGMO to MAP	2000 NIP	MADEN (13)	
FL200 13,000	8000	4000	1700	1600
1500	1400	760		
↑2.97° TCH 51	087° Arc	2 NM	1.7 NM	1.5
CATEGORY	C	D	E	
S-10 *	420-¾ 399 (400-¾)			
CIRCLING	560-1½ 537 (600-1½)	780-2½ 757 (800-2½)	920-3 897 (900-3)	
			HIRL Rwy 10-28	

JACKSONVILLE, FLORIDA 30°14'N-81°41'W JACKSONVILLE NAS (TOWERS FLD) (KNIP)

HI-TACAN Z RWY 10

