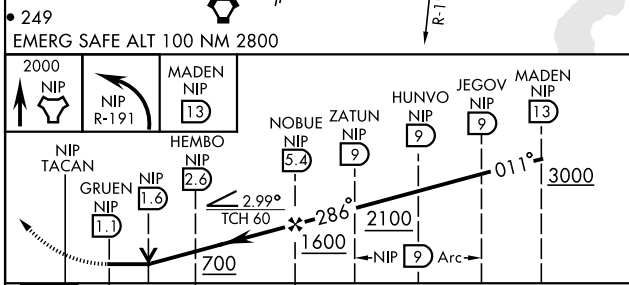
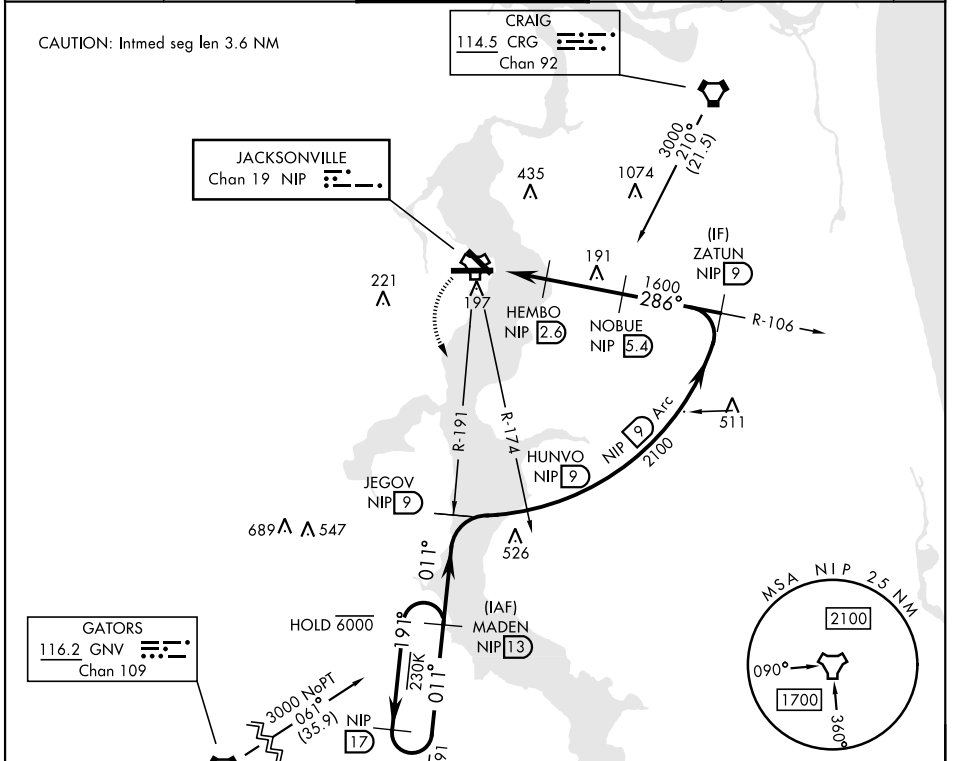


TACAN Y RWY 28

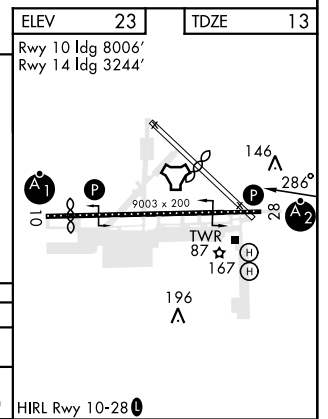
TACAN NIP Chan 19	APCH CRS 286°	Rwy ldg TDZE Arprt Elev 9003 13 23	[USN]	JACKSONVILLE NAS (TOWERS FLD)	(KNIP)
----------------------	------------------	---	-------	-------------------------------	--------

<p>▼ *When ALS inop, increase CAT AB vis to 1 mile, CAT CD vis to 1½ miles.</p>	<p>SALSF A2</p>	<p>MISSED APPROACH: Climb to 2000 direct NIP TACAN and turn left outbound R-191 to MADEN and hold.</p>
---	---------------------	--

<p>ATIS 124.35 290.425</p>	<p>APP CON 127.775 377.075</p>	<p>NAVY JACKSONVILLE TOWER 125.15 (CTAF) 340.2</p>	<p>GND CON 128.6 336.4</p>	<p>CLNC DEL 134.775 0353.675</p>	<p>ASR/ PAR</p>
--------------------------------	------------------------------------	--	--------------------------------	--------------------------------------	---------------------



CATEGORY	A	B	C	D
S-28*	400-¾ 387 (400-¾)		400-⅞ 387 (400-⅞)	
CIRCLING	500-1 477 (500-1)		560-1½ 537 (600-1½)	780-2½ 757 (800-2½)



TACAN Y RWY 28

SE-3, 26 DEC 2024 to 23 JAN 2025

SE-3, 26 DEC 2024 to 23 JAN 2025