

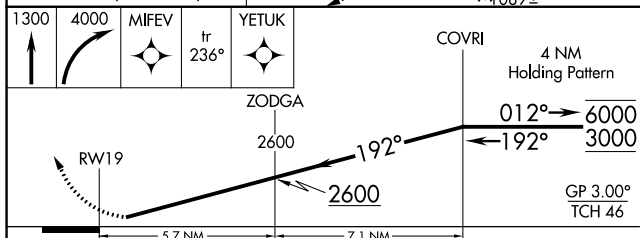
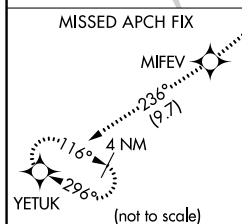
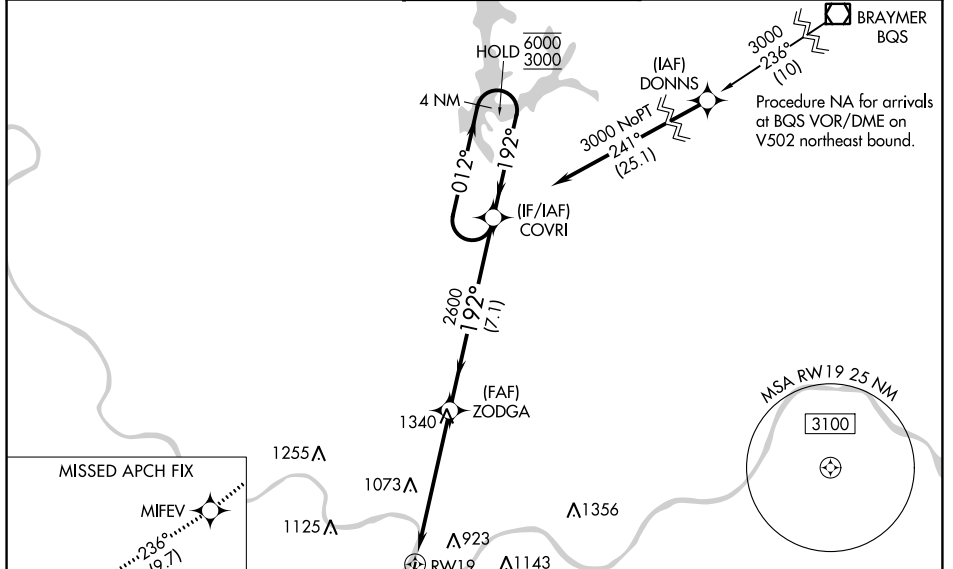
WAAS CH <b>90320</b> <b>W19A</b>	APP CRS <b>192°</b>	Rwy Idg TDZE Apt Elev	<b>6525</b> <b>754</b> <b>757</b>
--	------------------------	-----------------------------	---

# RNAV (GPS) Z RWY 19

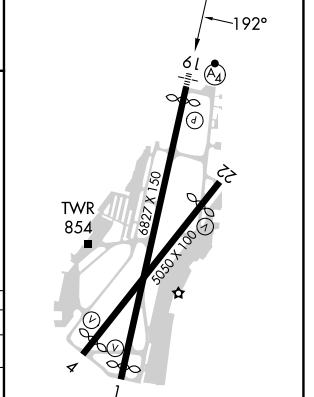
CHARLES B WHEELER DOWNTOWN (MKC)

RNP APCH-GPS. ▼ Rwy 19 helicopter visibility reduction below RVR 4000 NA. Inop table does not apply to LPV* all Cats. For uncompensated Baro-VNAV systems, LNAV/VNAV NA below -19°C or above 54°C. For inop ALS, increase LPV visibility all Cats to RVR 5500.	MALSF A4	MISSED APPROACH: Climb to 1300 then climbing right turn to 4000 direct MIFEV and on track 236° to YETUK and hold. *Missed approach requires minimum climb of 300 feet per NM to 1500. #Missed approach requires minimum climb of 360 feet per NM to 2400.
---	-------------	---

ATIS <b>120.75</b>	KANSAS CITY APP CON <b>118.4 307.35</b>	DOWNTOWN TOWER <b>133.3 233.7</b>	CLNC DEL <b>121.9</b>	GND CON <b>121.9</b>
-----------------------	--	--------------------------------------	--------------------------	-------------------------



ELEV 757	D	TDZE 754
----------	---	----------



CATEGORY	A	B	C	D
LPV DA*		1004/40	250 (300-¾)	
LPV DA		1097/40	343 (400-¾)	
LNAV/VNAV DA#		1077/40	323 (400-¾)	
LNAV/VNAV DA		1468-1¾	714 (800-1¾)	

RLS Rwy 1  
REIL Rws 1 and 22  
HIRL Rws 4-22 and 1-19

NC-3, 26 DEC 2024 to 23 JAN 2025

NC-3, 26 DEC 2024 to 23 JAN 2025