

KEY WEST, FLORIDA

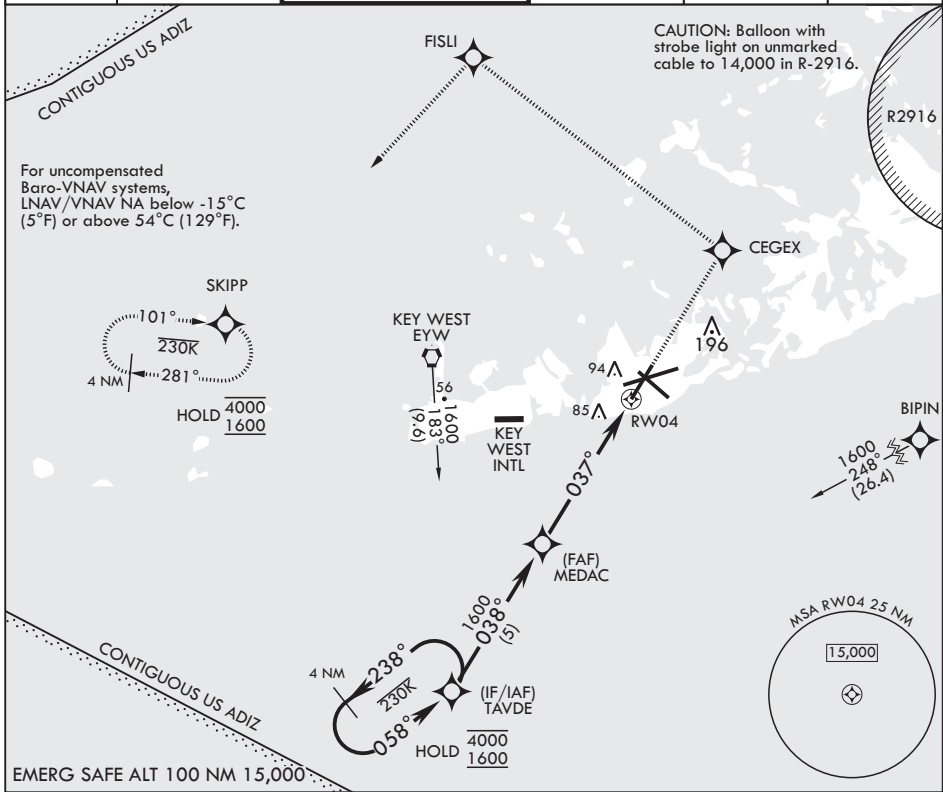
RNAV (GPS) RWY 4

| | | |
|----------|------------|------|
| APCH CRS | Rwy Idg | 7001 |
| 037° | TDZE | 4 |
| | Arprt Elev | 6 |

AL-214 (USN) KEY WEST NAS (BOCA CHICA FLD) (KNQX)

| | | | |
|----------------|---|--|--|
| RNP APCH | MISSED APPROACH: (Do not exceed 230 KIAS until CEGEX.) Climb to 1600 direct CEGEX, track 314° to FISLI, track 229° to SKIPP and hold. | | |
| RADAR required | | | |

| | | | | | |
|---------|---------------|----------------------|--------------|-------------|---------|
| ATIS★ | APP CON | NAVY KEY WEST TOWER★ | GND CON | CLNC DEL | ASR/PAR |
| 307.025 | 124.025 313.7 | 118.575 340.25 | 121.7 336.45 | 121.2 357.4 | |



| | | | | |
|--|----------------------|----------------------|------------------------|----------------------|
| VGSI and RNAV glidepath not coincident (VGSI Angle 3.00/TCH 35). | | | | |
| <p>4 NM Holding Pattern</p> <p>4000 ← 238°</p> <p>1600 → 058°</p> <p>TAVDE</p> <p>038°</p> <p>1600</p> <p>GP 3.00° TCH 45</p> <p>MEDAC</p> <p>037°</p> <p>1.3 NM to RW04</p> <p>RW04</p> <p>4.9 NM</p> | | | | |
| CATEGORY | A | B | C | D |
| LNAV/VNAV DA | 245-¾ | | 250 | (300-¾) |
| LNAV MDA | 460-1 | 456 (500-1) | 460-1½ | 456 (500-1½) |
| ✪ CIRCLING | 460-1 454 (500-1) | 500-1 494 (500-1) | 500-1½ 494 (500-1½) | 560-2 554 (600-2) |

KEY WEST, FLORIDA 24°34'N - 81°41'W KEY WEST NAS (BOCA CHICA FLD) (KNQX)

Amdt 2 23FEB23

RNAV (GPS) RWY 4

SE-3, 26 DEC 2024 to 23 JAN 2025

SE-3, 26 DEC 2024 to 23 JAN 2025