

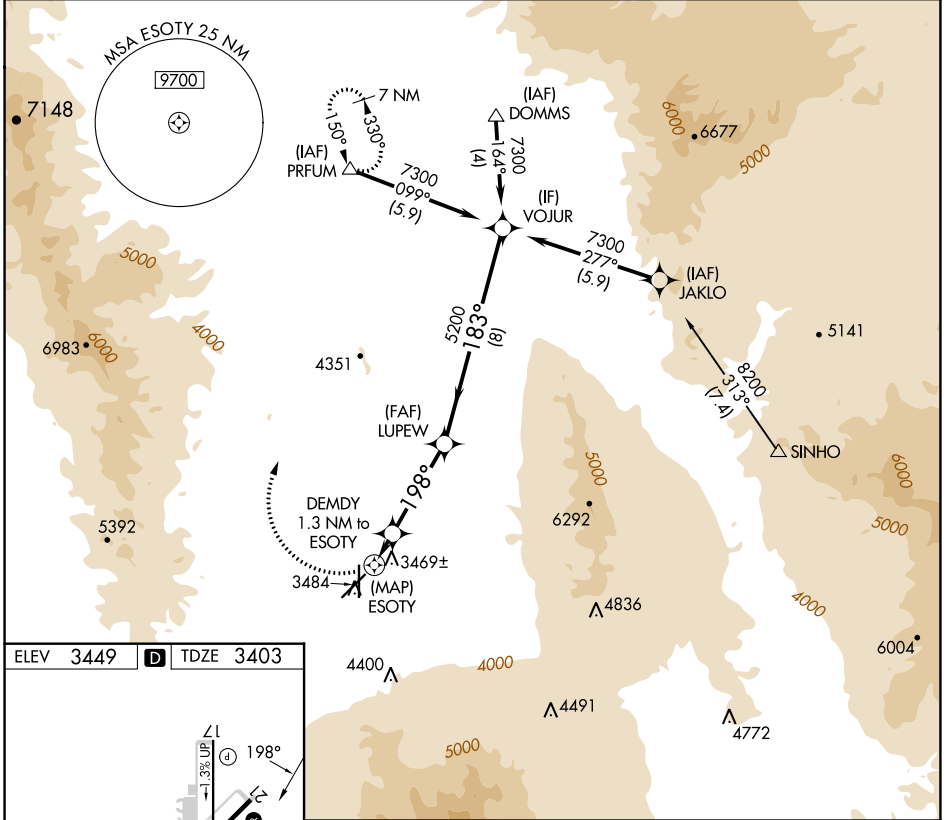
APP CRS	Rwy Idg	6827
198°	TDZE	3403
	Apt Elev	3449

RNAV (GPS) Y RWY 21

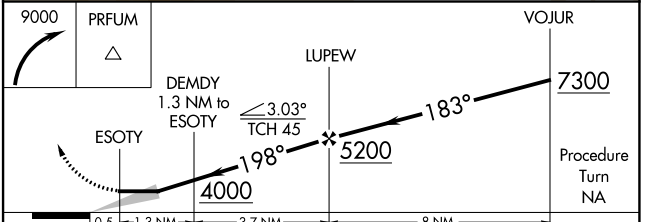
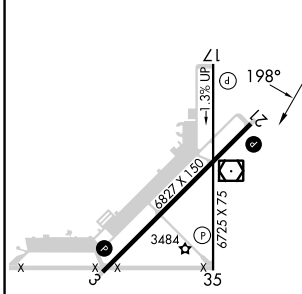
KINGMAN (IGM)

<p>⚠ DME/DME RNP-0.3 NA. Circling NA for Cat D southeast of Rwy 3-21. Circling Rwy 35 NA at night.</p>	<p>MISSED APPROACH: Climbing right turn to 9000 direct PRFUM and hold, continue climb-in-hold to 9000.</p>
---	--

ASOS 119.275	LOS ANGELES CENTER 124.85 319.2	UNICOM 122.8 (CTAF) 📻
------------------------	---	--



ELEV	3449	D	TDZE	3403
------	-------------	----------	------	-------------



CATEGORY	A	B	C	D
LNAV MDA	3820-1	417 (400-1)	3820-1¼	417 (400-1¼)
CIRCLING	3980-1 531 (600-1)	4100-1 651 (700-1)	4420-3	971 (1000-3)

REIL Rwy 3 and 21 **📻**
MIRL Rwy 3-21 and 17-35 **📻**

SW-4, 26 DEC 2024 to 23 JAN 2025

SW-4, 26 DEC 2024 to 23 JAN 2025