

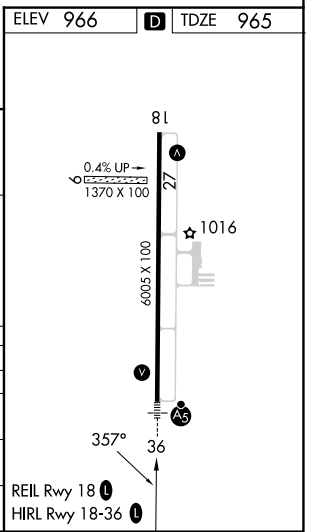
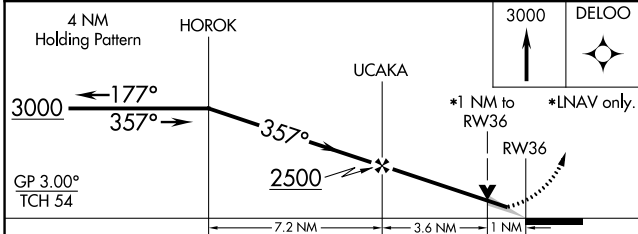
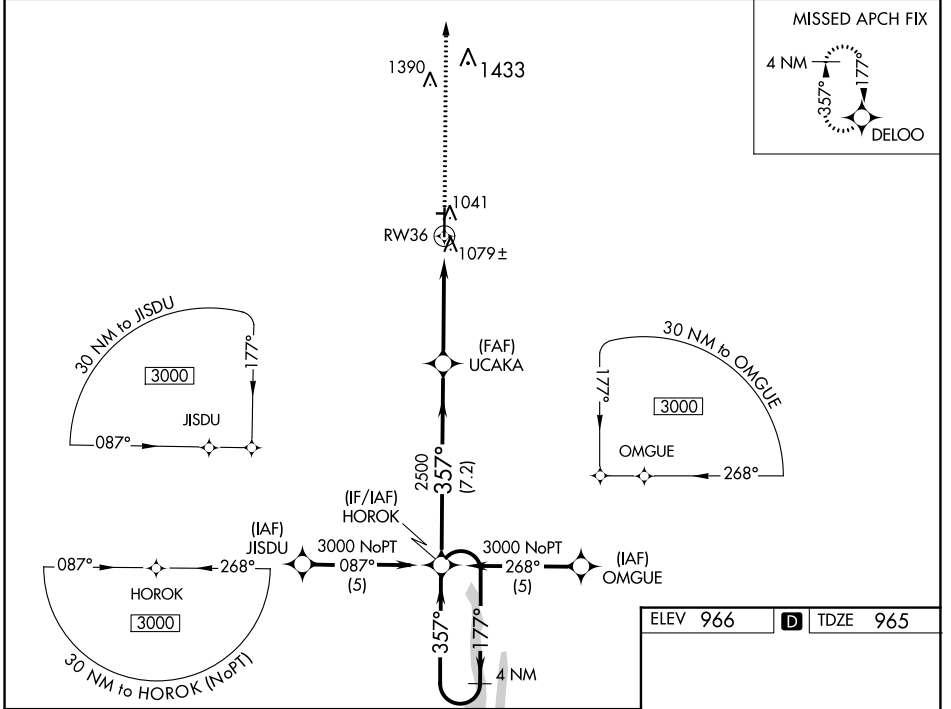
WAAS CH <b>70513</b> <b>W36A</b>	APP CRS <b>357°</b>	Rwy Idg TDZE Apt Elev	<b>6005</b> <b>965</b> <b>966</b>
--	------------------------	-----------------------------	---

# RNAV (GPS) RWY 36

KIRKSVILLE RGNL (IRK)

RNP APCH.	MALSR	MISSED APPROACH: Climb to 3000 direct DELOO and hold.
Circling NA to Rwsy 9 and 27. For uncompensated Baro-VNAV systems, LNAV/VNAV NA below -16°C or above 46°C.		

ASOS <b>121.125</b>	KANSAS CITY CENTER <b>132.6 370.9</b>	UNICOM <b>122.8 (CTAF)</b>
------------------------	--	-------------------------------



CATEGORY	A	B	C	D
LPV DA		1165- <sup>1</sup> / <sub>2</sub>	200 (200- <sup>1</sup> / <sub>2</sub> )	
LNAV/VNAV DA		1349- <sup>3</sup> / <sub>4</sub>	384 (400- <sup>3</sup> / <sub>4</sub> )	
LNAV MDA	1340- <sup>1</sup> / <sub>2</sub>	375 (400- <sup>1</sup> / <sub>2</sub> )		1340-1 375 (400-1)
CIRCLING	1400-1 434 (500-1)	1440-1 474 (500-1)	1460-1 <sup>1</sup> / <sub>2</sub> 494 (500-1 <sup>1</sup> / <sub>2</sub> )	1540-2 574 (600-2)

NC-3, 26 DEC 2024 to 23 JAN 2025

NC-3, 26 DEC 2024 to 23 JAN 2025