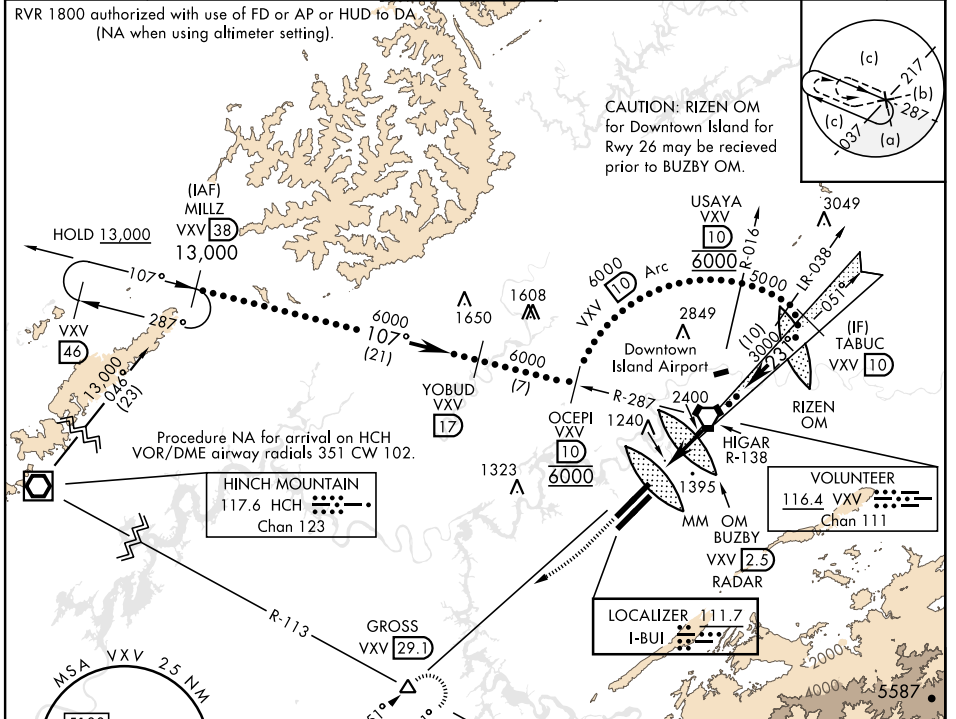


HI-ILS or LOC RWY 23R

LOC I-BUI 111.7	APCH CRS 231°	Rwy ldg TDZE Arprt Elev 9495 984 986	[USAF]	MC GHEE TYSON (KTYS)
DME required		ALSF-2	MISSED APPROACH: Climb to 2000 then climbing right turn to 4000 on heading 240° and VXV VORTAC R-231 to GROSS/VXV 29.1 DME and hold.	
*When ALS inop, increase CAT E RVR to 40, vis to ¾ mile. **When ALS inop, increase vis to 1½ miles.				

ATIS 128.35	KNOXVILLE APP CON 123.9 360.8	KNOXVILLE TOWER 121.2 257.8	GND CON 121.9 348.6	CLNC DEL 121.65	ASR
-----------------------	---	---------------------------------------	-------------------------------	---------------------------	-----

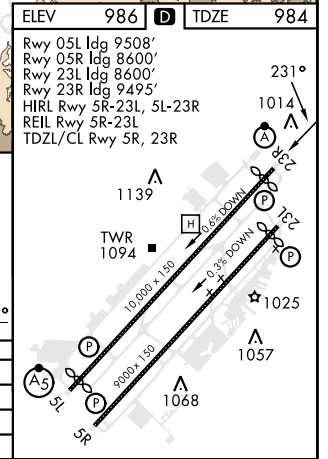


EMERG SAFE ALT 100 NM 8900

2000	4000	GROSS
↑	hdg 240°	VXV 29.1

MM	5	2.5	5000
0.3	3.8 NM	231°	2400
		231°	3000
		GS 3.00°	TCH 53

CATEGORY	C	D	E
S-ILS 23R *	1184/1800	200	(200-½)
S-LOC 23R **	1560-1¼	576	(600-1¼)
CIRCLING	1660-2 674 (700-2)	1900-3	914 (1000-3)



SE-1, 26 DEC 2024 to 23 JAN 2025

SE-1, 26 DEC 2024 to 23 JAN 2025

HI-ILS or LOC RWY 23R