

HI-VOR or TACAN RWY 23R

VORTAC VXV 116.4 Chan 111	APCH CRS 224°	Rwy ldg TDZE Arpt Elev 9495 984 986
---	-------------------------	---

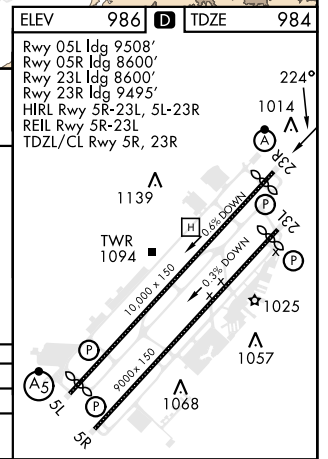
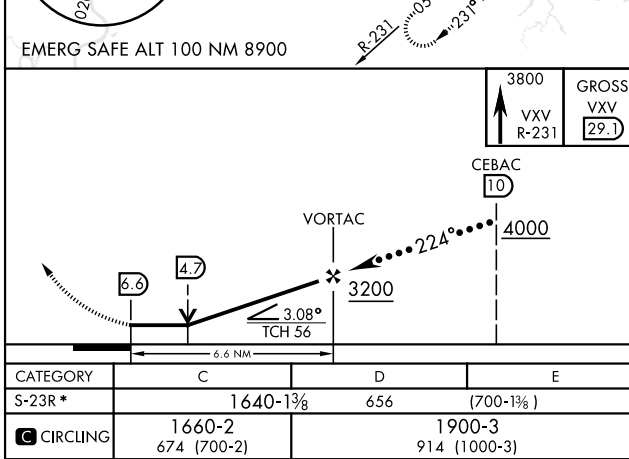
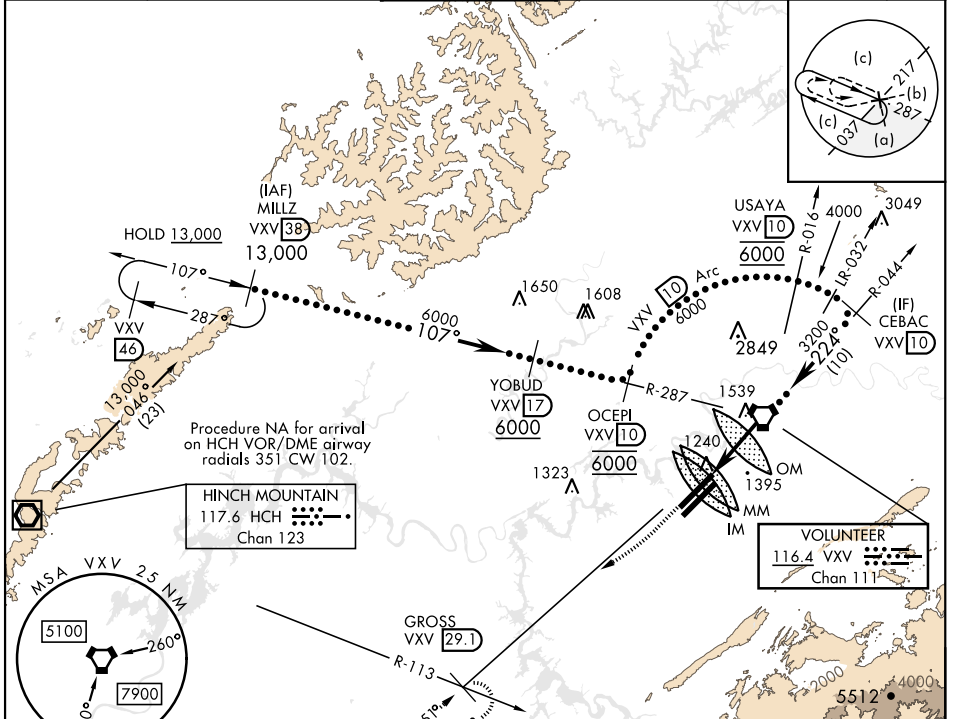
[USAF]

MC GHEE TYSON (KTYS)

DME required
* When ALS inop, increase vis to 1½ miles.

ALSF-2
MISSED APPROACH: Climb to 3800 direct on VXV VORTAC R-231 to GROSS/29.1 DME and hold.

ATIS 128.35	KNOXVILLE APP CON 123.9 360.8	KNOXVILLE TOWER 121.2 257.8	GND CON 121.9 348.6	CLNC DEL 121.65	ASR
-----------------------	---	---------------------------------------	-------------------------------	---------------------------	-----



HI-VOR or TACAN RWY 23R

SE-1, 26 DEC 2024 TO 23 JAN 2025

SE-1, 26 DEC 2024 TO 23 JAN 2025