

# HI-VOR or TACAN RWY 5L

VORTAC VXV <b>116.4</b> Chan <b>111</b>	APCH CRS <b>045°</b>	Rwy ldg TDZE Arprt Elev <b>9508</b> <b>953</b> <b>986</b>
---	-------------------------	--

[USAF]

MC GHEE TYSON (KTYS)

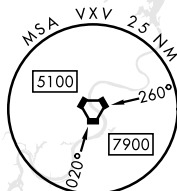
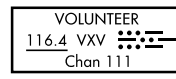
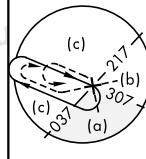
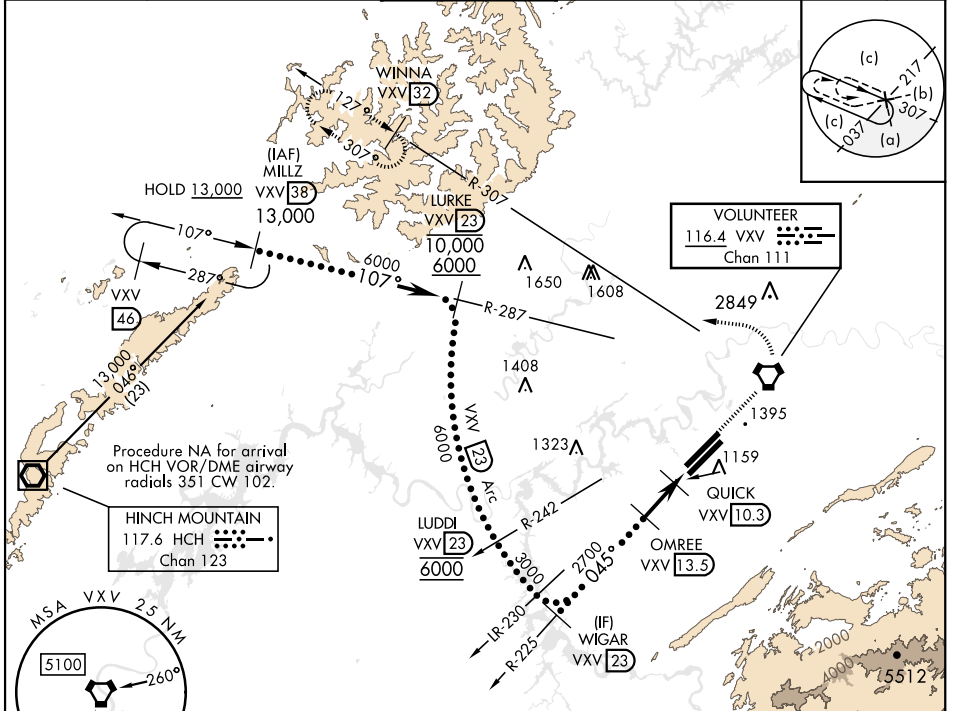
DME required

\* When ALS inop, increase vis to 1½ miles.



MISSED APPROACH: Climb to 6000 direct to VXV VORTAC, then on VXV R-307 to WINNA/VXV 32 DME and hold.

ATIS <b>128.35</b>	KNOXVILLE APP CON <b>123.9 360.8</b>	KNOXVILLE TOWER <b>121.2 257.8</b>	GND CON <b>121.9 348.6</b>	CLNC DEL <b>121.65</b>	ASR
-----------------------	---	---------------------------------------	-------------------------------	---------------------------	-----

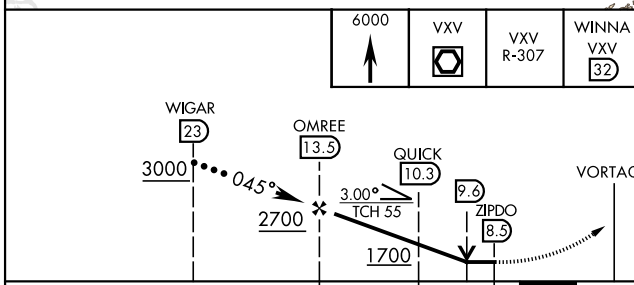


SE-1, 26 DEC 2024 to 23 JAN 2025

SE-1, 26 DEC 2024 to 23 JAN 2025

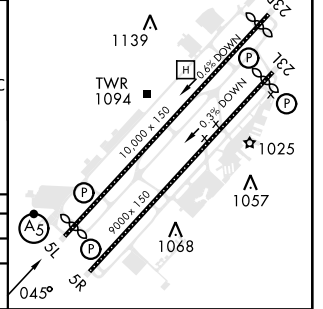
EMERG SAFE ALT 100 NM 8900

6000	VXV	VXV R-307	WINNA VXV 32
------	-----	-----------	--------------



ELEV 986	TDZE 953
----------	----------

Rwy 05L ldg 9508'  
Rwy 05R ldg 8600'  
Rwy 23L ldg 8600'  
Rwy 23R ldg 9495'  
HIRL Rwy 5R-23L, 5L-23R  
REIL Rwy 5R-23L  
TDZL/CL Rwy 5R, 23R



CATEGORY	C	D	E
S-5L*	1480/55	527	(600-1)
CIRCLING	1660-2 674 (700-2)	1900-3	914 (1000-3)

# HI-VOR or TACAN RWY 5L