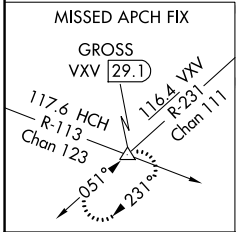
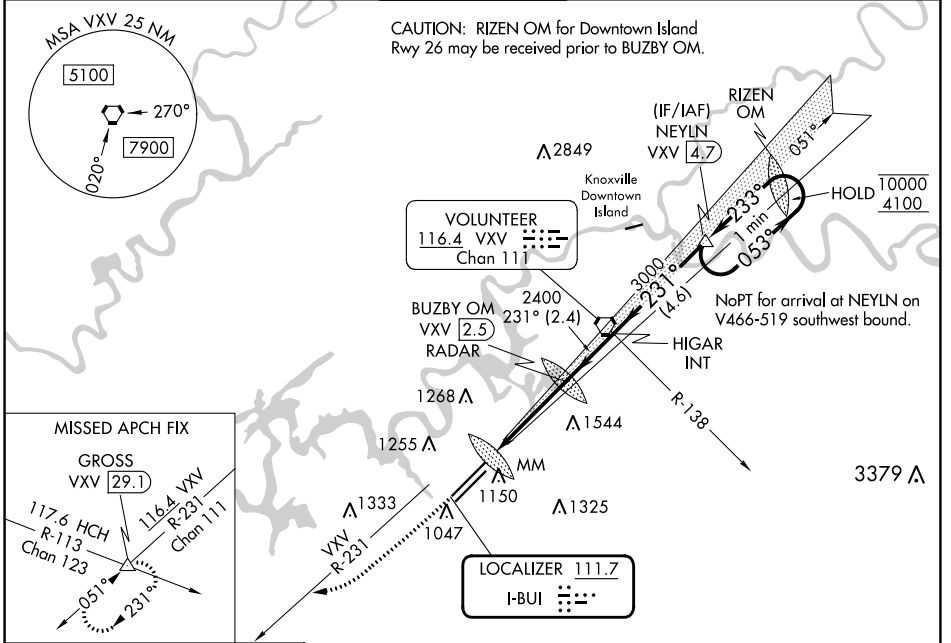


LOC I-BUI 111.7	APP CRS 231°	Rwy ldg TDZE Apt Elev	9495 984 986
---------------------------	------------------------	-----------------------------	---

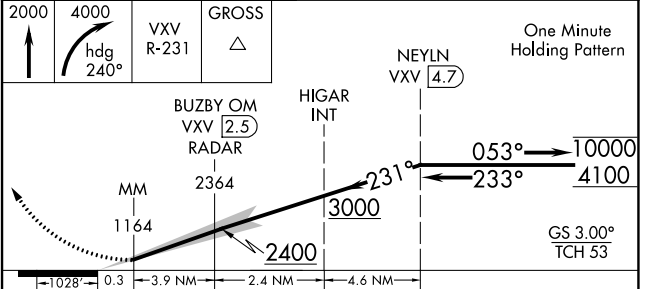
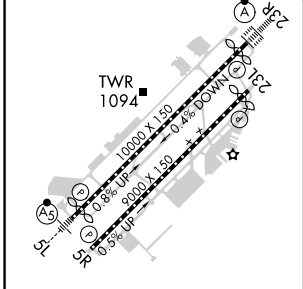
ILS RWY 23R (CAT II)

MC GHEE TYSON (TYS)

DME or RADAR required.		ALSF-2	MISSED APPROACH: Climb to 2000 then climbing right turn to 4000 on heading 240° and VXV VORTAC R-231 to GROSS INT/VXV 29.1 DME and hold.	
ATIS 128.35	KNOXVILLE APP CON 123.9 360.8	KNOXVILLE TOWER 121.2 257.8	GND CON 121.9 348.6	CLNC DEL 121.65



ELEV 986	D	TDZE 984
----------	----------	----------



CATEGORY	A	B	C	D
S-ILS 23R	RA 103/12 100 DA 1084			

CATEGORY II ILS - SPECIAL AIRCREW & AIRCRAFT CERTIFICATION REQUIRED

SE-1, 26 DEC 2024 to 23 JAN 2025

SE-1, 26 DEC 2024 to 23 JAN 2025