

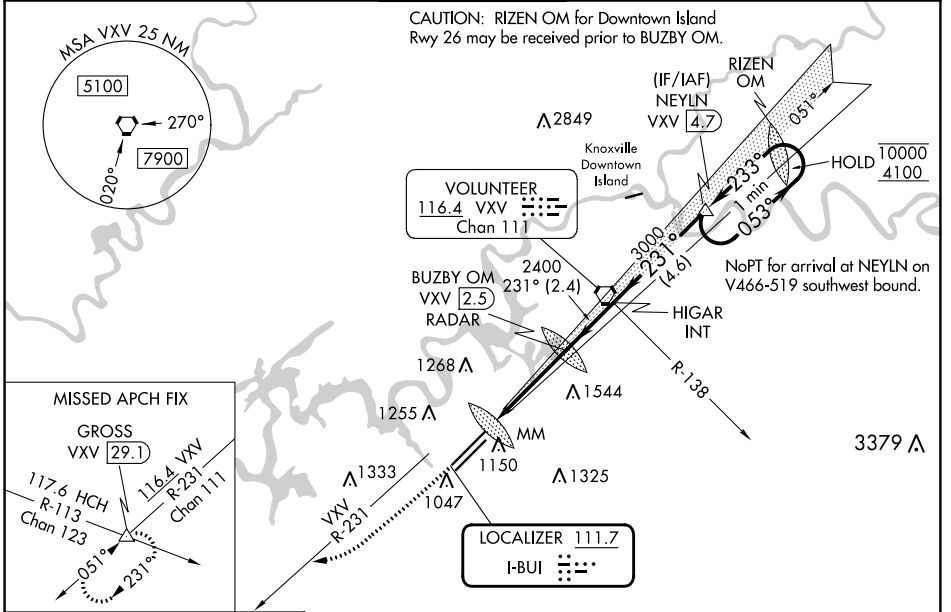
LOC I-BUI 111.7	APP CRS 231°	Rwy Idg TDZE Apt Elev	9495 984 986
---------------------------	------------------------	-----------------------------	---

ILS or LOC RWY 23R

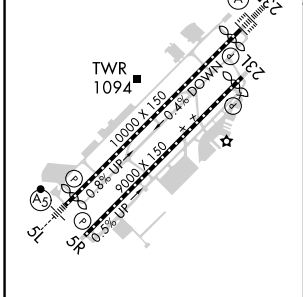
MC GHEE TYSON (T'YS)

DME or RADAR required.		ALSIF-2	MISSED APPROACH: Climb to 2000 then climbing right turn to 4000 on heading 240° and VXV VORTAC R-231 to GROSS INT/VXV 29.1 DME and hold.
<p>▼ For inop ALS, increase S-ILS 23R Cat E visibility to RVR 4000; increase S-LOC 23R Cat C/D/E visibility to 1/8 SM.</p>			

ATIS 128.35	KNOXVILLE APP CON 123.9 360.8	KNOXVILLE TOWER 121.2 257.8	GND CON 121.9 348.6	CLNC DEL 121.65
-----------------------	---	---------------------------------------	-------------------------------	---------------------------



ELEV 986	D	TDZE 984
----------	----------	----------



2000	4000	VXV R-231	GROSS	One Minute Holding Pattern					
↑		hdg 240°	△						
		BUZBY OM VXV 2.5 RADAR	HIGAR INT						
		VXV MM 5	NEVLN VXV 4.7						
		VXV MM 6.6	3000						
		2400	231°						
		2364	053°						
		231°	233°						
		0.3	1.3	2.5	2.4	4.6			

HIRL Rws 5L-23R and 5R-23L					
REIL Rws 5R and 23L					
TDZ/CL Rws 5R and 23R					
FAF to MAP 4.2 NM					
Knots	60	90	120	150	180
Min:Sec	4:12	2:48	2:06	1:41	1:24

CATEGORY	A	B	C	D	E
S-ILS 23R	1184/18 200 (200-½)				
S-LOC 23R	1560/24	576 (600-½)	1560-1¼	576 (600-1¼)	
CIRCLING	1560-1	574 (600-1)	1660-2 674 (700-2)	1900-3	914 (1000-3)

SE-1, 26 DEC 2024 to 23 JAN 2025

SE-1, 26 DEC 2024 to 23 JAN 2025