

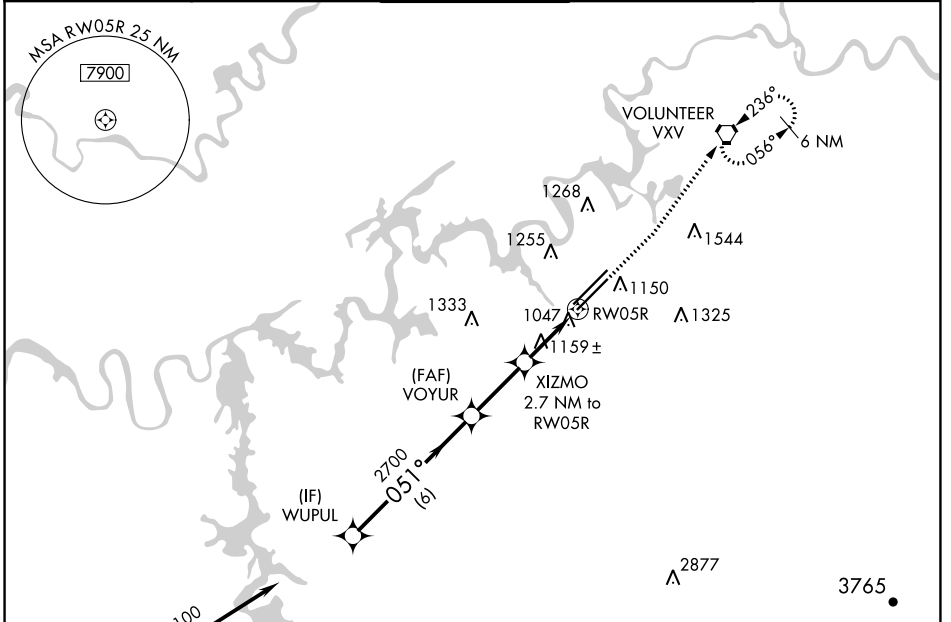
WAAS CH <b>97410</b> <b>W05B</b>	APP CRS <b>051°</b>	Rwy Idg TDZE Apt Elev	<b>8600</b> <b>959</b> <b>986</b>
--	------------------------	-----------------------------	---

# RNAV (GPS) RWY 5R

MC GHEE TYSON (T'YS)

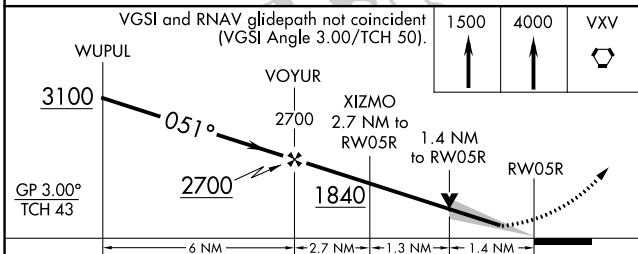
RNP APCH - GPS.		MISSED APPROACH: Climb to 1500 then climb to 4000 direct VXV VORTAC and hold, continue climb-in-hold to 4000.		
For uncompensated Baro-VNAV systems, LNAV/VNAV NA below -10°C or above 54°C.				

ATIS <b>128.35</b>	KNOXVILLE APP CON <b>123.9 360.8</b>	<b>KNOXVILLE TOWER</b> <b>121.2 257.8</b>	GND CON <b>121.9 348.6</b>	CLNC DEL <b>121.65</b>
-----------------------	---	--	-------------------------------	---------------------------



(IAF) GROSS 3100 064° (9.7)

Procedure NA for arrivals at GROSS on V115 southwest bound.



GP 3.00° TCH 43				
CATEGORY	A	B	C	D
LPV DA	1159-3/4		200 (200-3/4)	
LNAV/VNAV DA	1276-1 1/8		317 (300-1 1/8)	
LNAV MDA	1420-1	461 (500-1)	1420-1 3/8	461 (500-1 3/8)
CIRCLING	1500-1 514 (600-1)	1620-1 634 (700-1)	1660-2 674 (700-2)	1900-3 914 (1000-3)

ELEV 986	TDZE 959
----------	----------

HIRL Rwy 5L-23R and 5R-23L  
REIL Rwy 5R and 23L  
TDZ/CL Rwy 5R and 23R

SE-1, 26 DEC 2024 to 23 JAN 2025

SE-1, 26 DEC 2024 to 23 JAN 2025