

WAAS CH <b>56509</b> <b>W13A</b>	APP CRS <b>135°</b>	Rwy Idg TDZE <b>656</b> Apt Elev <b>656</b>	<b>5310</b>
--	------------------------	---	-------------

# RNAV (GPS) RWY 13

LA CROSSE RGNL (LSE)

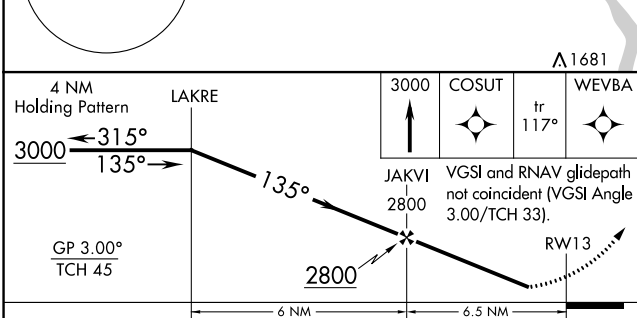
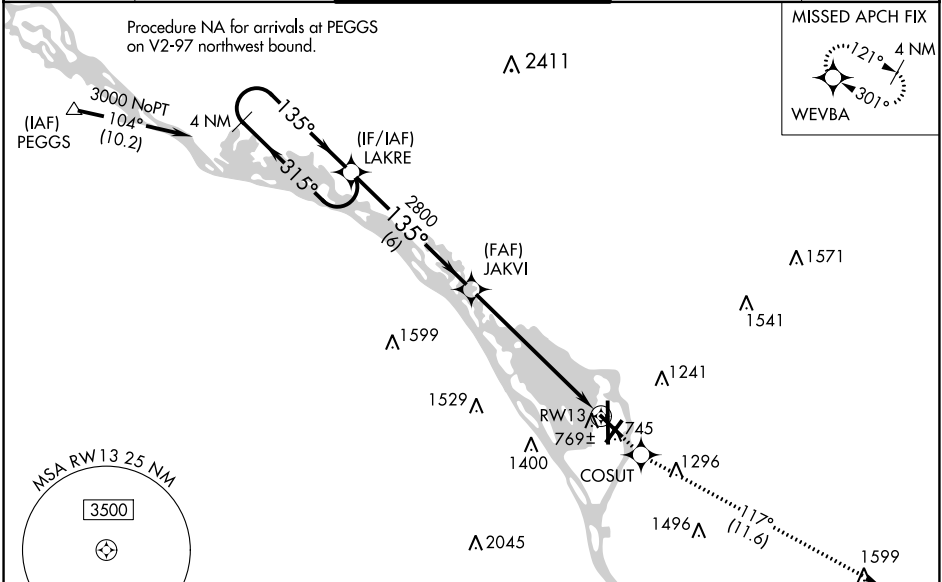
**▽** Baro-VNAV NA when using Winona altimeter setting. For uncompensated Baro-VNAV systems, LNAV/VNAV NA below -27° C (-16° F) or above 54° C (130° F). DME/DME RNP-0.3 NA. Helicopter visibility reduction below ¾ SM NA. Circling to Rwy 22 NA at night.

**⚠** -22°C

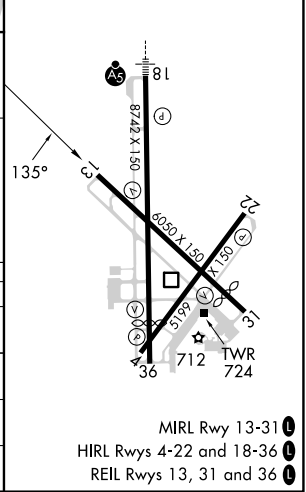
When local altimeter setting not received, use Winona altimeter setting and increase DA 53 feet, increase LPV and LNAV/VNAV visibility ¼ mile all Cats, increase all MDA 60 feet, increase LNAV Cats C/D and Circling Cat B visibility ¼ mile.

**MISSED APPROACH:**  
Climb to 3000 direct COSUT and on track 117° to WEVBA and hold.

ATIS <b>124.95</b>	MINNEAPOLIS CENTER <b>128.6 363.0</b>	LA CROSSE TOWER * <b>118.45 (CTAF) 0 251.075</b>	GND CON <b>121.8</b>	UNICOM <b>122.95</b>
-----------------------	--	---	-------------------------	-------------------------



ELEV 656	<b>D</b> TDZE 656
----------	-------------------



CATEGORY	A	B	C	D
LPV DA	958-1 302 (400-1)			
LNAV/VNAV DA	1020-1¼ 364 (400-1¼)			
LNAV MDA	1140-1 484 (500-1)	1140-1⅞ 484 (500-1⅞)		1140-1½ 484 (500-1½)
<b>C</b> CIRCLING	1140-1 484 (500-1)	1460-1 804 (900-1)	1760-3 1104 (1200-3)	1820-3 1164 (1200-3)

MIRL Rwy 13-31  
HIRL Rws 4-22 and 18-36  
REIL Rws 13, 31 and 36

EC-3, 26 DEC 2024 to 23 JAN 2025

EC-3, 26 DEC 2024 to 23 JAN 2025