

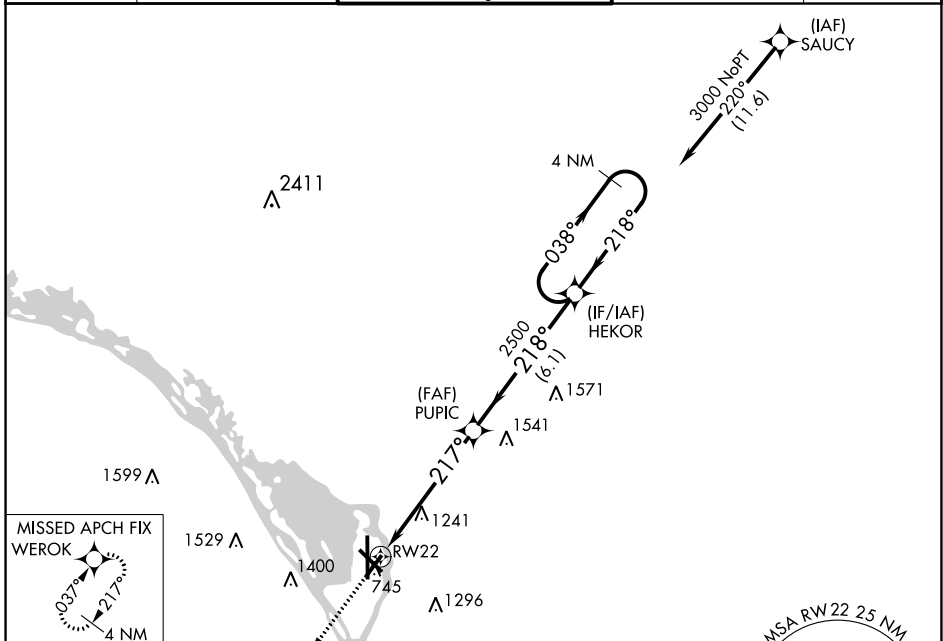
APP CRS 217°	Rwy Idg 5199
	TDZE 654
	Apt Elev 656

RNAV (GPS) RWY 22

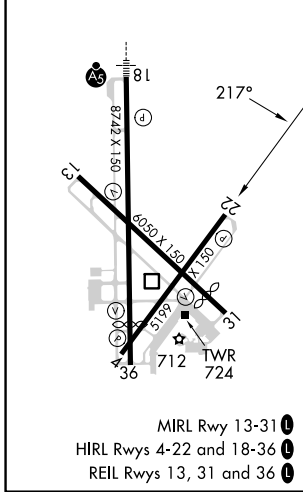
LA CROSSE RGNL (LSE)

RNP APCH.	When local altimeter setting not received, use Winona altimeter setting and increase all MDA 60 feet. Rwy 22 helicopter visibility reduction below 1 SM NA.	MISSED APPROACH: Climb to 3100 direct WEROK and hold.
-----------	---	---

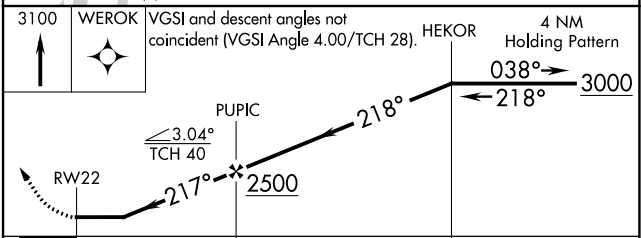
ATIS 124.95	MINNEAPOLIS CENTER 128.6 363.0	LA CROSSE TOWER ★ 118.45 (CTAF) 251.075	GND CON 121.8	UNICOM 122.95
-----------------------	--	---	-------------------------	-------------------------



ELEV 656	D	TDZE 654
----------	----------	----------



3100	WEROK	VGSI and descent angles not coincident (VGSI Angle 4.00/TCH 28).	HEKOR	4 NM Holding Pattern
------	-------	--	-------	----------------------



CATEGORY	A	B	C	D
LNAV MDA	1820-1/4 1166 (1200-1/4)	1820-1/2 1166 (1200-1/2)	1820-3	1166 (1200-3)
C CIRCLING	1820-1/4 1164 (1200-1/4)	1820-1/2 1164 (1200-1/2)	1820-3	1164 (1200-3)

EC-3, 26 DEC 2024 to 23 JAN 2025

EC-3, 26 DEC 2024 to 23 JAN 2025